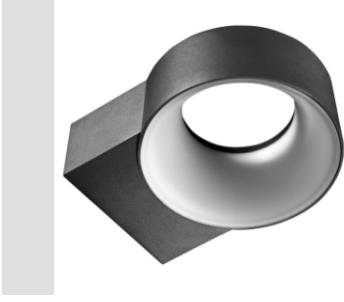


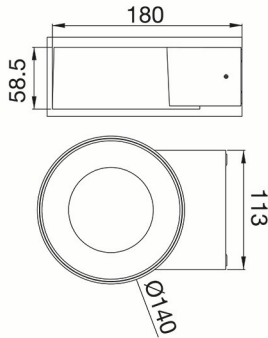
ELIA OL - Wall light LED



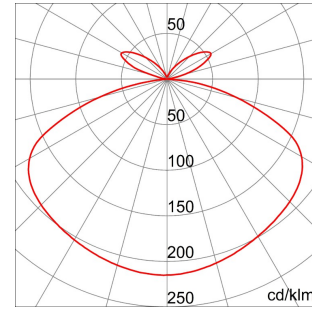
ELIA OL is an elegant die-cast aluminum fixture for wall mounting, ideal for indoor and outdoor architectural lighting such as: stairs, passageways or facades, quick and easy to install, with a clean and essential line. Designed in two different finishes (black and white), with double emission diffusing polycarbonate opal screen (top and down) to create a comfortable atmosphere, color temperatures of 3,000K, 4,000 K and 5,700 K and a color rendering index greater than 80. It has been designed to withstand temperature variations from -20 ° C to + 45 ° C, water and dust penetration up to IP65 degree and shocks up to IK08 degree. Light and handy ELIA OL is easy to install thanks also to the rear bracket for fixing, the quick-fit terminal placed in the back for the electrical wiring.

GENERAL INFORMATION		OPTIC AND ILLUMINATING FEATURES	
Context	Outdoor architectural lighting	Optik	Wide opal
Luminaire panoları	LED luminaire for diffuse light	Unified Glare Rating	UGR ≤ 25
Unique digital code (Datamatrix)	Currently not present	Lümen çıkışı (lm)	680
Renk	Siyah	Efficiency (lm/W)	85
Işık kaynağı tipi	LED - değiştirilemez	Renk Sıcaklık	5700 K
Sistem gücü	8 W	Color Rendering Index	CRI>80
LED Lifetime	L80B50 (Tq25°) = 50.000h	Standard Deviation Colour Matching	SDCM = 5
Ağırlık (kg)	0.49	Photobiological Risk Class	RG0
Garanti	5 yıl	Standart	-
Depolama sıcaklığı	-20° +65°	ELETRICAL AND LIGHTING FEATURES	
Operating temperature	-20° +45°	besleme voltaj	100-240 V
MATERIALS	-	Nominal frekans (Hz)	50/60 Hz
Body	Alüminyum pres döküm	Driver	Included
Ekran tipi	Polycarbonate	Driver failure rate	F025 = 50.000h Tq 25°C
Optic	-	Overvoltage protection	DM 0,5KV / CM 1KV
Gasket	-	Control System	Tek başına
Locking Hook	-	INSTALLATION AND MAINTENANCE	
External screw	-	Mouting and installation	Duvara montaj
Colour	-	Tilt	-
STANDARDS AND APPROVALS	-	Wiring	With connection terminal
Sınıflandırma	-	Stainless steel support	-
Yüzey sıcaklığı azaltılmış cihaz	-	Light souce replaceability	Not available
DIN 18032-3 belgesi	-	Controlgear replaceability	Not available
IPEA	-	Driver Box	Yerleşik
Yalıtım sınıfı	I	Rüzgara maruz maksimum yüzey	-
IP derecesi	IP65	-	-
Direnç dayanıklı	IK08	-	-
Akkor Tel Deneyi:	750 °C	-	-

DIMENSIONAL



PHOTOMETRIC DISTRIBUTION



TECHNICAL SYMBOLOGY



IP

IP65

IK

IK08

GWT

750 °C

STANDARDS/APPROVALS

Data, measures, designs and pictures are for information purpose only, last update 22/05/2022. They can be changed at any moment, therefore it is always recommended to read the last updated version published on the website www.gewiss.com. Lumen output and system power are subject to a tolerance of +/- 10%. Unless stated otherwise, the values apply to an ambient temperature of 25°C. Terms of warranty at <https://www.gewiss.com/it/en/company/landingpage/led-warranty>. - 1 of 2



Product Data Sheet
GWF2100FR857

ELIA OL - Wall light LED

