

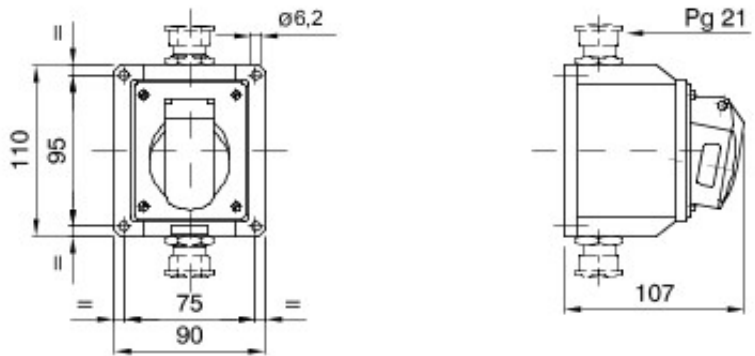


A range of trailing and fixed plugs and socket-outlets for industrial use, complying with the dimensional and performance standards unified at International level (IEC 60309) and assimilated by the European Standards (EN 60309) and Italian Standards (CEI 23-12). Socket-outlets and plugs with a rated current of 63 and 125A are equipped with an extra pilot contact (CP) for creating an electric interlock. The range is completed with 90° fixed plugs and 10° and 90° fixed socket-outlets. Sleeves and pins are obtained from solid brass bar, type Pt. CuZn40Pb2 (Cu 58%, Zn 40%, Pb 2%); anti-loosening terminals with unlosable screws, and built-in cable clamp with anti-abrasion cable gland.

|                            |  |                                |   |
|----------------------------|--|--------------------------------|---|
| Renk                       | Yeşil  | Nominal akım (A)               | 32  |
| IP derecesi                | IP44   | Kutup adedi                    | 2P  |
| Direnç dayanıklı           | IK08   | Referans h                     | 11  |
| Tip                        | 10° açılı siva üstü montaj prizi                 | Nominal voltaj                 | 20-25V ve 40-50 V   |
| Frekans                    | 401 - 500 Hz                                     | Terminal sıkıştırma kapasitesi | 2,5-6mm <sup>2</sup> esnek kablolar - 2,5-10mm <sup>2</sup> sert kablolar |
| Çalıştırma sıcaklığı       | -25 +40 °C                                       | Kablolama tipi                 | Vidalı  |
| Elektrokod                 | 2210   | Akkor Tel Deneyi               | 850 °C (aktif parçalar) - 650 °C (pasif parçalar)                         |
| Toplam çalışma sayısı      | > 2000   | İzin verilen aşırı yüklenme    | 42 A  |
| 1.1 Un'de Kesme kapasitesi | 40 A   | Yalıtım direnci                | > 10 MΩ   |
| Bilyeli termo sıcaklık     | 125 °C (aktif parçalar) - 80 °C (pasif parçalar) |                                |   |



### DIMENSIONAL



### TECHNICAL SYMBOLOGY

**IP**

IP44

**IK**

IK08



Vidalı

**GWT**

850 °C (aktif parçalar) - 650 °C (pasif parçalar)



125 °C (aktif parçalar) - 80 °C (pasif parçalar)

### STANDARDS/APPROVALS



GEWISS S.p.A. Via A. Volta, 1  
24069 Cenate Sotto - Bergamo - Italy  
tel. +39 035 94 61 11 fax +39 035 94 69 09

www.gewiss.com  
sat@gewiss.com  
Last update 15/04/2021

Data, measures, designs and pictures are shown only as informative purposes, and could be changed without previous notice