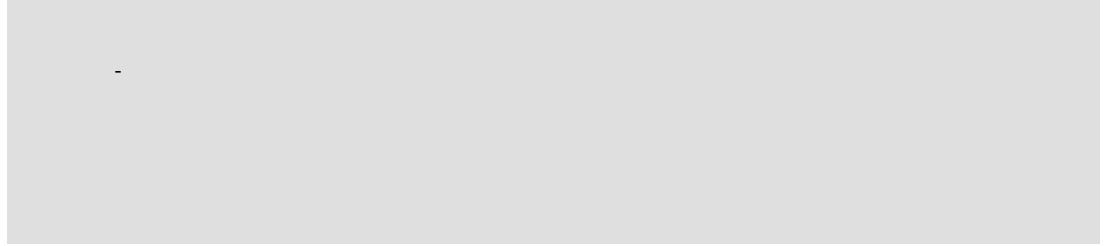


Product Data Sheet

GW66683PM

IB Range

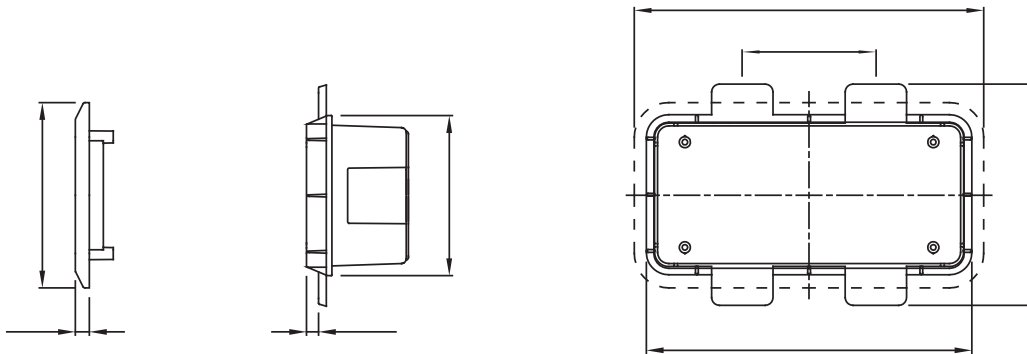


For walls	Plasterboard	Houseable interloc. socket	1
IP degree	IP55	Mechanical resistance	IK08
Houseable IB socket-outlets	16/32 A SBF / CBF / Automatika	Electrocod	2220
Glow wire test	850 °C (bottom) - 650 °C (frame)	Drilling bottom	Through multidiameter cutter
Minimum installation temperature	-15°C		

DIMENSIONAL

49
5

32



TECHNICAL SYMBOLOGY

IP

IK

GWT

IP55

IK08

850 °C (bottom) -
650 °C (frame)

STANDARDS/APPROVALS

