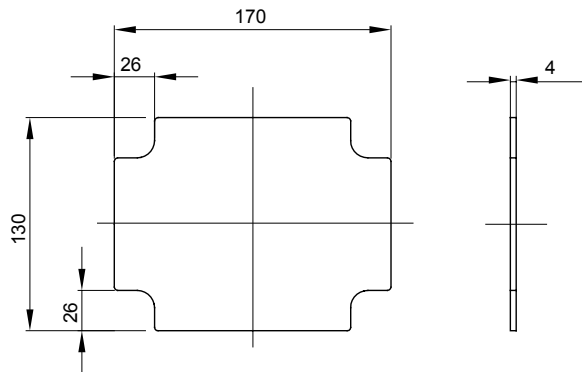




Range 44 CE - Surface-mounting watertight junction boxes in compliance with EN 60670-1 (CEI 23-48) and IEC 60670-22 (CEI 23-94) and made in high-performance technopolymers. The range includes versions with protection degree IP44, IP55, IP56 with smooth walls or with quick entry cable glands and different type of covers: blind / transparent, deep/plain, press-on/screw (in plastic, also 1/4 turn, or in metal). Available in different self-extinguishing materials (up to GWT 960 °C). Suitable for ordinary junctions, for special uses, and for industrial uses.

Material	Insulation	For distribution boards	GW42001 - GW42002 - GW42003
For boxes dimensions	190x140	For boxes centre distance BxH (mm)	190x140
Electrocod	0303		

DIMENSIONAL



STANDARDS/APPROVALS

