



Description Switch disconnecter with accessory option
 Code 90 AM Range
 No. of poles 2P
 Rated current 63 A
 AC Rated operational voltage (Ue) 415 V

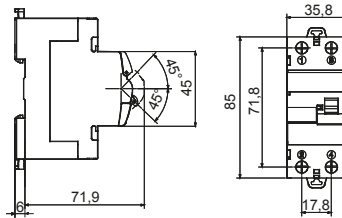
ELECTRICAL CHARACTERISTICS

Standard	EN 60947-3
Rated insulation voltage (Ui)	500 V
Rated impulse withstand voltage (Uimp)	4 kV
Rated frequency (Hz)	50/60 Hz
Use category	AC-23A
Rated short-time withstand current for 1s (Icw)	1.260 A
Power dissipation per pole	2,8 W
Electrical endurance	5.000 maneuvers

MECHANICAL CHARACTERISTICS

Mechanical life	20.000 maneuvers
Screwdriver suggested	PZ2
Rated tightening torque	3 Nm
Max rigid cable section	≤ 1x35 mm ² - ≤ 2x16 mm ² - ≤ 1x16 + 2x10 mm ²
Max. section flex. cables	≤ 1x35 mm ² - ≤ 2x16 mm ² - ≤ 1x16 + 2x10 mm ²
IP degree	IP20
Working temperature	-25°C ÷ +60°C
Tropicalization	55°C - UR 95%
Upline/downline power supply	Si
Biconnection (cable + fork combs)	Yes (upstream and downstream)
Lockable	Yes, with GW96041

DIMENSIONAL



STANDARDS/APPROVALS

