



Description Switch disconnector
 Code 90 AM Range
 No. of poles 4P
 Rated current 80 A
 AC Rated operational voltage (Ue) 415 V

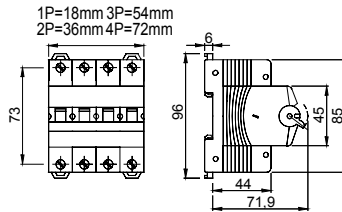
ELECTRICAL CHARACTERISTICS

Standard	EN 60947-3
Rated insulation voltage (Ui)	500 V
Rated impulse withstand voltage (Uimp)	4 kV
Rated frequency (Hz)	50/60 Hz
Use category	AC-22A
Rated short-time withstand current for 1s (Icw)	960 A
Power dissipation per pole	3,2 W
Electrical endurance	3.000 maneuvers

MECHANICAL CHARACTERISTICS

Mechanical life	20.000 maneuvers
Screwdriver suggested	Philips
Rated tightening torque	2.5 Nm
Max rigid cable section	≤ 1x50 mm ² - ≤ 2x25 mm ² - ≤ 3x16 mm ²
Max. section flex. cables	≤ 1x70 mm ² - ≤ 2x35 mm ² - ≤ 1x16 + 2x25 mm ²
IP degree	IP20
Working temperature	-5°C + +40°C
Tropicalization	55°C - UR 95%
Upline/downline power supply	Yes
Biconnection (cable + fork combs)	Yes (downstream only)
Lockable	No

DIMENSIONAL



STANDARDS/APPROVALS

