



Description Switch disconnecter  
 Code 90 AM Range  
 No. of poles 1P  
 Rated current 100 A  
 AC Rated operational voltage (Ue) 240 V

#### ELECTRICAL CHARACTERISTICS

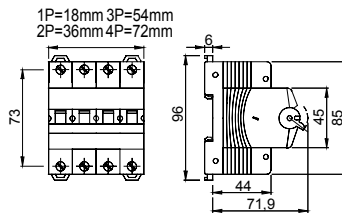
Standard	EN 60947-3
Rated insulation voltage (Ui)	500 V
Rated impulse withstand voltage (Uimp)	4 kV
Rated frequency (Hz)	50/60 Hz
Use category	AC-22A
Rated short-time withstand current for 1s (Icw)	1.200 A
Power dissipation per pole	5 W
Electrical endurance	3.000 maneuvers

#### MECHANICAL CHARACTERISTICS

Mechanical life	20.000 maneuvers
Screwdriver suggested	Philips
Rated tightening torque	2.5 Nm
Max rigid cable section	≤ 1x50 mm <sup>2</sup> - ≤ 2x25 mm <sup>2</sup> - ≤ 3x16 mm <sup>2</sup>
Max. section flex. cables	≤ 1x70 mm <sup>2</sup> - ≤ 2x35 mm <sup>2</sup> - ≤ 1x16 + 2x25 mm <sup>2</sup>
IP degree	IP20
Working temperature	-5°C + +40°C
Tropicalization	55°C - UR 95%

-	- Upline/downline power supply	Si
-	- Biconnection (cable + fork combs)	Yes (downstream only)
-	- Lockable	No

### DIMENSIONAL



### STANDARDS/APPROVALS

