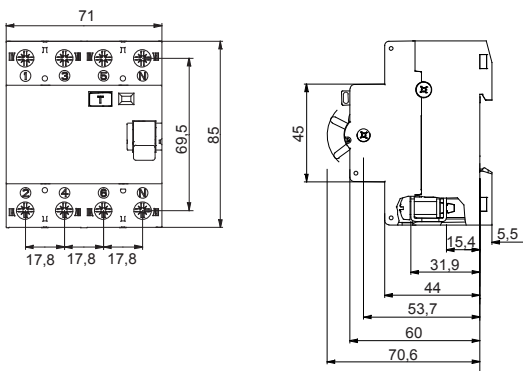




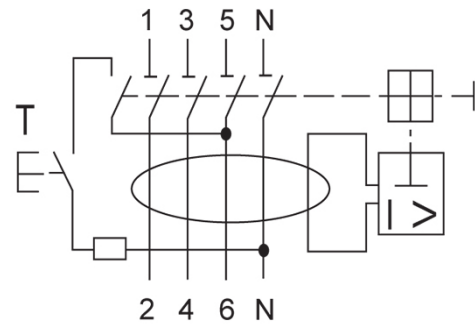
|   |                                  |
|---|----------------------------------|
| Description                               | RESIDUAL CURRENT CIRCUIT BREAKER |
| Code                                      | IDP                              |
| No. of poles                              | 4P                               |
| No. modules                               | 4                                |
| Rated current                             | 125 A                            |
| Rated residual operating current          | 300 mA                           |
| Type                                      | A[S]                             |
| Rated voltage (EN/IEC 61008-1, 61008-2-1) | 400V                             |

|                           |                                  |  |                                |
|---------------------------|----------------------------------|--|--------------------------------|
| Standard                  | IEC/EN 61008-1, IEC/EN 61008-2-1 | Rated frequency (Hz)                   | 50Hz                           |
| Insulation voltage (Ui)   | 400 V                            | Rated impulse withstand voltage (Uimp) | 4 kV                           |
| Overtoltage category      | III                              | Level of immunity (8/20 μs)            | 3000 A                         |
| Section rigid cable       | ≤ 50 mm²                         | Section flexible cable                 | ≤ 50 mm²                       |
| Rated tightening torque   | 2.5 Nm                           | Double connection                      | YES (up stream and down stram) |
| Operating temperature     | -25 +40 °C                       | Stocking temperature                   | -35 +60 °C                     |
| Electrical endurance      | 4000                             | Mechanical endurance                   | 10.000                         |
| Auxiliaries compatibility | Yes                              | ReStart compatibility                  | No                             |
| Assembly position         | Any                              |  |                                |

### DIMENSIONAL



### WIRING DIAGRAM



### STANDARDS/APPROVALS

