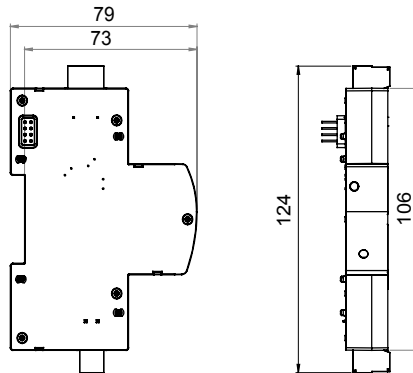




Wi-Fi communication interface module (GWD0953) must be coupled on the right side of ReStart RD PRO 2P and RM PRO 2P. Thanks to Wi-Fi ReStart APP, you can monitor the system status in real time and everywhere. You can see the values of the energy produced and consumed, the active and reactive power, the current and the voltage of the system.

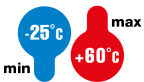
Description	Interface module Wi-Fi	Code	90 ReStart range
No. of modules EN 50022	1	Suitable for	ReStart Rd PRO 2P / ReStart Rm PRO 2P
Rated frequency (Hz)	50	Rated voltage	230/240 V a.c.
Max power consumption	1,6 W	Operating temperature	-25 +60 °C
Rated impulse withstand voltage (Uimp)	4 kV	Rated tightening torque	0,4 Nm
Stocking temperature	-40°C ÷ +70°C	Rated insulation voltage (Ui)	500 V
Standard	EN 61326-1; EN 301489-1; EN 301489-17	Distribution system	TT - TN-S
Terminal section	2.5 mm ²	Minimum requirements of the operating system	Android 4.4 / iOS 9
Wi-Fi communication	2.4	Maximum Wi-Fi range	100m free space trasmission (towards router) - 80m free space trasmission (other directions)
Maximum measurable current	80 A	CT maximum cable section	25 Square millimeter
Measure of electrical parameters	Yes		

DIMENSIONAL



TECHNICAL SYMBOLOGY

INSTALLATION



STANDARDS/APPROVALS

