

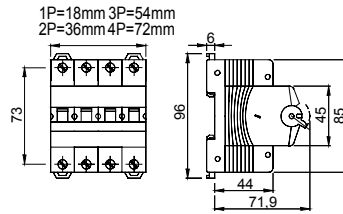


Tanım Switch disconnecter  
 Kod 90 AM Serisi  
 Kutup adedi 2P  
 Nominal akım 32 A  
 AC Rated operational voltage (Ue) 415 volt

#### ELECTRICAL CHARACTERISTICS

ELECTRICAL CHARACTERISTICS		MECHANICAL CHARACTERISTICS	
Standart	EN 60947-3	Mechanical life	20.000 maneuvers
Nominal yalıtım voltajı	500 V	Screwdriver suggested	PZ2
Voltaja dayanıklı nominal impuls (Uimp)	4 kV	Nominal sıkıştırma torku	2 Nm
Nominal frekans (Hz)	50/60 Hz	Max rigid cable section	≤ 1x35 mm <sup>2</sup> - ≤ 2x16 mm <sup>2</sup> - ≤ 1x16 + 2x10 mm <sup>2</sup>
Kullanım kategorisi	AC-23B	Maks kesit esnek kablolar	≤ 1x35 mm <sup>2</sup> - ≤ 2x16 mm <sup>2</sup> - ≤ 1x16 + 2x10 mm <sup>2</sup>
Rated short-time withstand current for 1s (Icw)	384 A	IP derecesi	IP20
Power dissipation per pole	0,8 W	Kullanım sıcaklığı	-5°C ÷ +40°C
Electrical endurance	5.000 maneuvers	Tropicalization	55°C - UR 95%
-	-	Upline/downline power supply	Yes
-	-	Biconnection (cable + fork combs)	Yes (downstream only)
-	-	Kitlenebilir	Hayır

#### DIMENSIONAL



#### STANDARDS/APPROVALS

