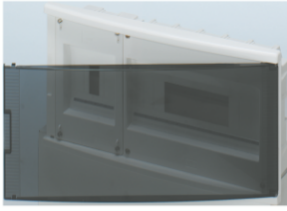


Product Data Sheet

GW40337

40 CDE



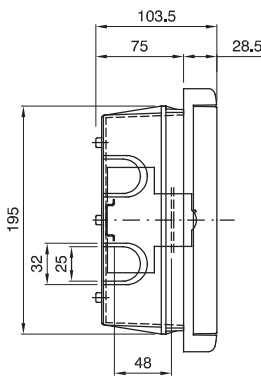
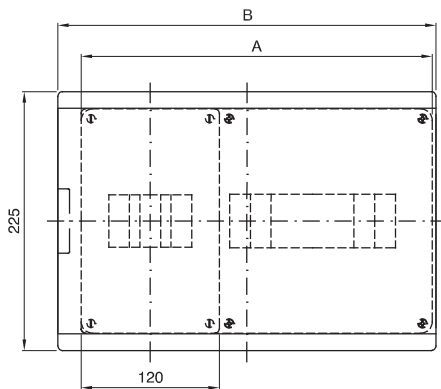
Spanish standard flush mounting enclosure IP40 with transparent door to house ICP power limiting circuit breaker. Sealable.

Insulation class	II	Rated current (A)	40
Outer dim. LxHxD (mm)	400x225x75	IP degree	IP40
Installation	Flush mounting enclosures	Mechanical resistance	IK07
Rated voltage (V)	400	R.U. 1407-D Classifications	CCE-ICP32
Door colour	Smoked Transparent	No. EN 50022 mod. ICP sect.	4
N. EN 50022 mod. CB section	12	Glow Wire Test	650 °C
Standard	IEC EN 60670-1; IEC EN 60670-24	Operating temperature	-15 ÷ +60°C
Insulation voltage (Ui)	750 V	Thermo-pressure with ball	70 °C
Type of knockout holes	Removable with tool	Type of enclosure	GP
Dispersible power (W)	10+15		

BEHAVIOUR WITH CHEMICAL AND ATMOSPHERIC AGENTS

Saline solution	Acids		Bases		Solvents				Mineral oil	UV rays
	Concentrated	Diluted	Concentrated	Diluted	Hexane	Benzol	Acetone	Ethyl alcohol		
Resistant	Not resistant	Limited resistance	Limited resistance	Not resistant	Limited resistance	Not resistant	Not resistant	Limited resistance	Limited resistance	Resistant

DIMENSIONAL



	I	A	B
4+8M	GW 40 336 GW 40 338	305	328,5
4+12M	GW 40 337 GW 40 339	372	400

TECHNICAL SYMBOLOGY



II

IP

IP40

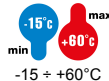
IK

IK07

GWT

650 °C

INSTALLATION



-15 ÷ +60°C



70 °C



Removable with tool

STANDARDS/APPROVALS



GEWISS S.p.A. Via Domenico Bosatelli 1
24069 Cenate Sotto - Bergamo - Italy
tel. +39 035 94 61 11 fax +39 035 94 69 09

www.gewiss.com
sat@gewiss.com
Last update 16/11/2024

Data, measures, designs and pictures are shown only as informative purposes, and could be changed without previous notice