

Product Data Sheet

GW90245

90 MCB Range



Description COMPACT MINIATURE CIRCUIT BREAKER

Code MTC 60

No. of poles 2P

No. modules 1

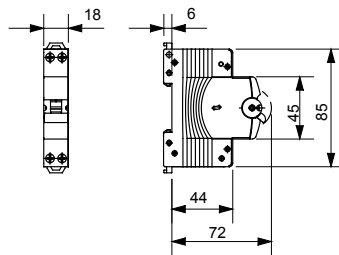
Rated current 6 A

Curve C

Rated voltage 230 V

Standard	EN 60898, EN 60947-2	Rated frequency (Hz)	50/60 Hz
Breaking capacity EN 60898 230V (Icn)	6000 A	Breaking capacity EN 60898 (Ics)	1 x Icn
Breaking capacity IEC/EN 60947-2 230V (Icu)	7.5 kA	Breaking capacity IEC/EN 60947-2 (Ics)	100% Icu
Insulation voltage (Ui)	500 V	Rated impulse withstand voltage (Uimp)	4 kV
Minimum operating voltage	12V ac/dc	Maximum operating voltage	440V AC / 220V DC
Electrical endurance	10.000	Mechanical endurance	20.000
Section rigid cable	$\leq 1 \times 16$ - $\leq 1 \times 10 + 1 \times 6$ mm ²	Section flexible cable	$\leq 1 \times 10$ - $\leq 2 \times 6$ mm ²
Rated tightening torque	1.2 Nm	Operating temperature	-25 +60 °C
Stocking temperature	-40°C + +70°C	Electrocod	1411

DIMENSIONAL



STANDARDS/APPROVALS



GEWISS S.p.A. Via Domenico Bosatelli 1
24069 Cenate Sotto - Bergamo - Italy
tel. +39 035 94 61 11 fax +39 035 94 69 09

www.gewiss.com
sat@gewiss.com
Last update 19/11/2024

Data, measures, designs and pictures are shown
only as informative purposes,
and could be changed without previous notice