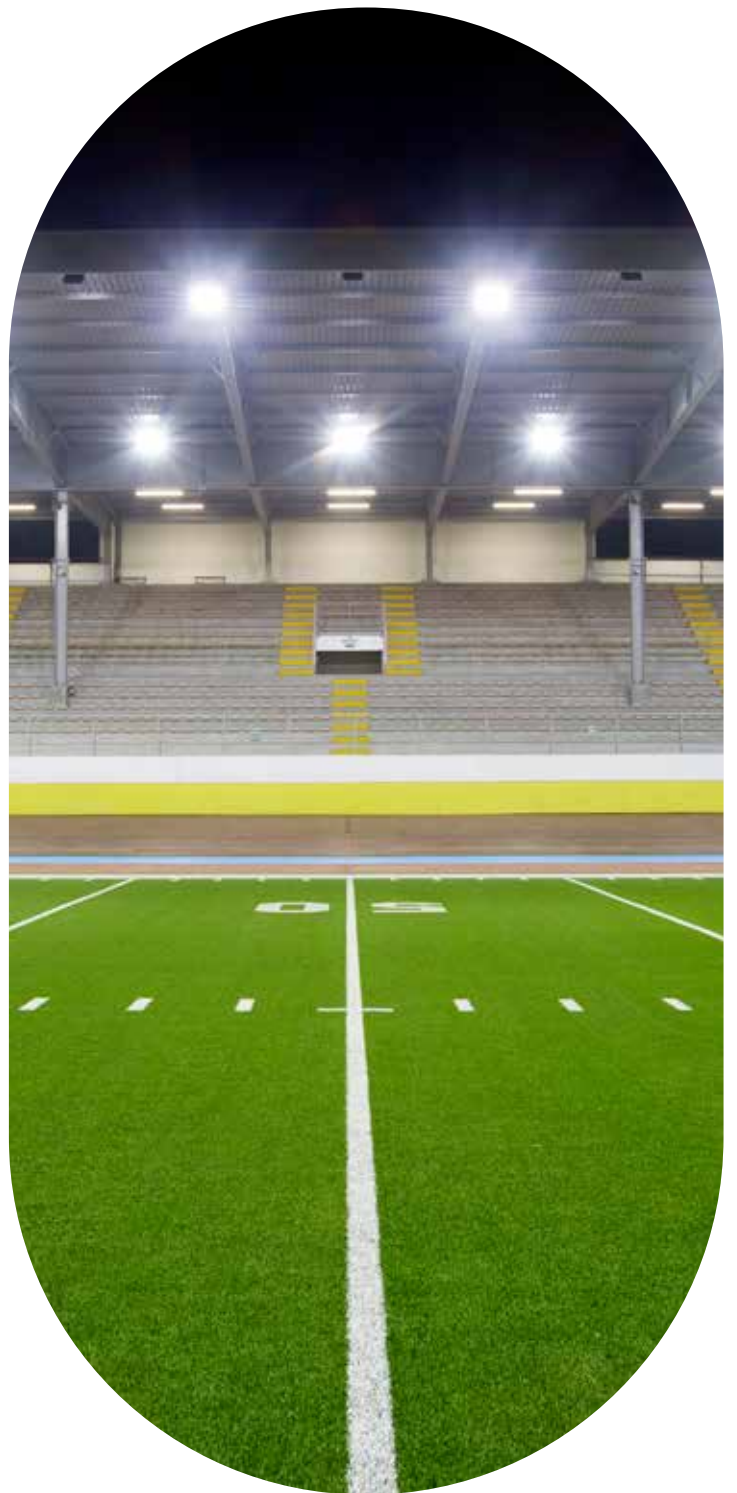
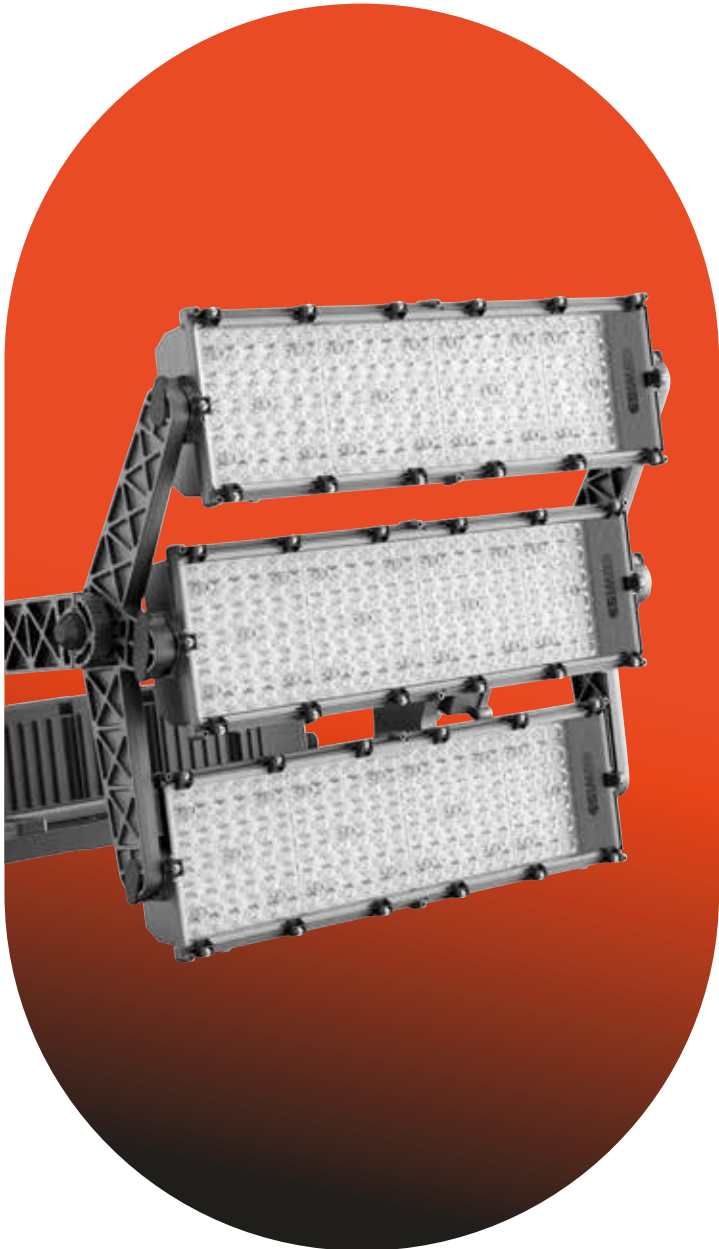


# Lighting



# CONTENTS

- 4 Introduction
- 8 Benefits
- 16 Technical features
- 22 Stadium PRO | 3
- 28 Stadium PRO | 2
- 34 Stadium PRO | 1
- 46 GEWISS services



**GEWISS**



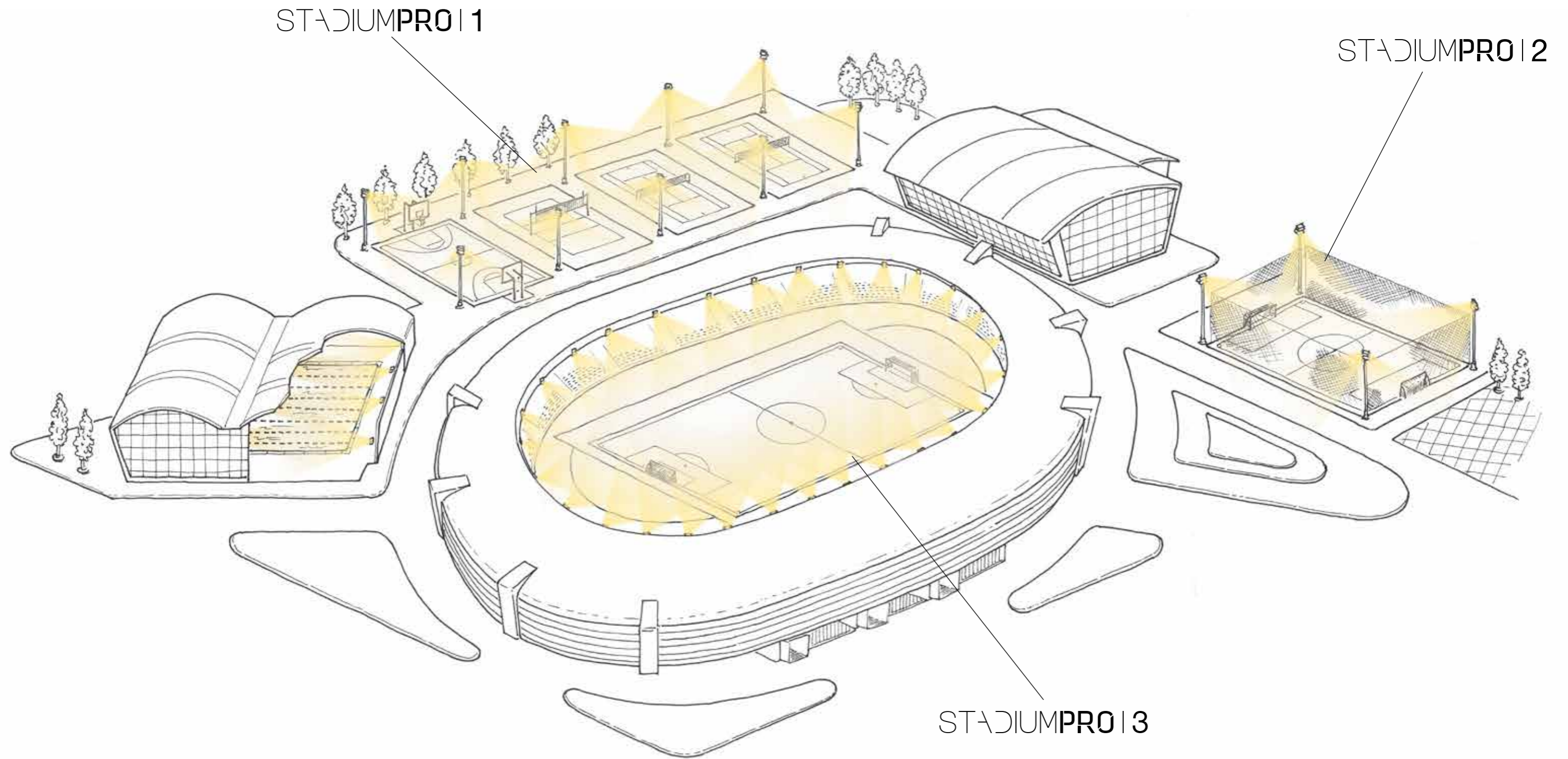
**Stadium**

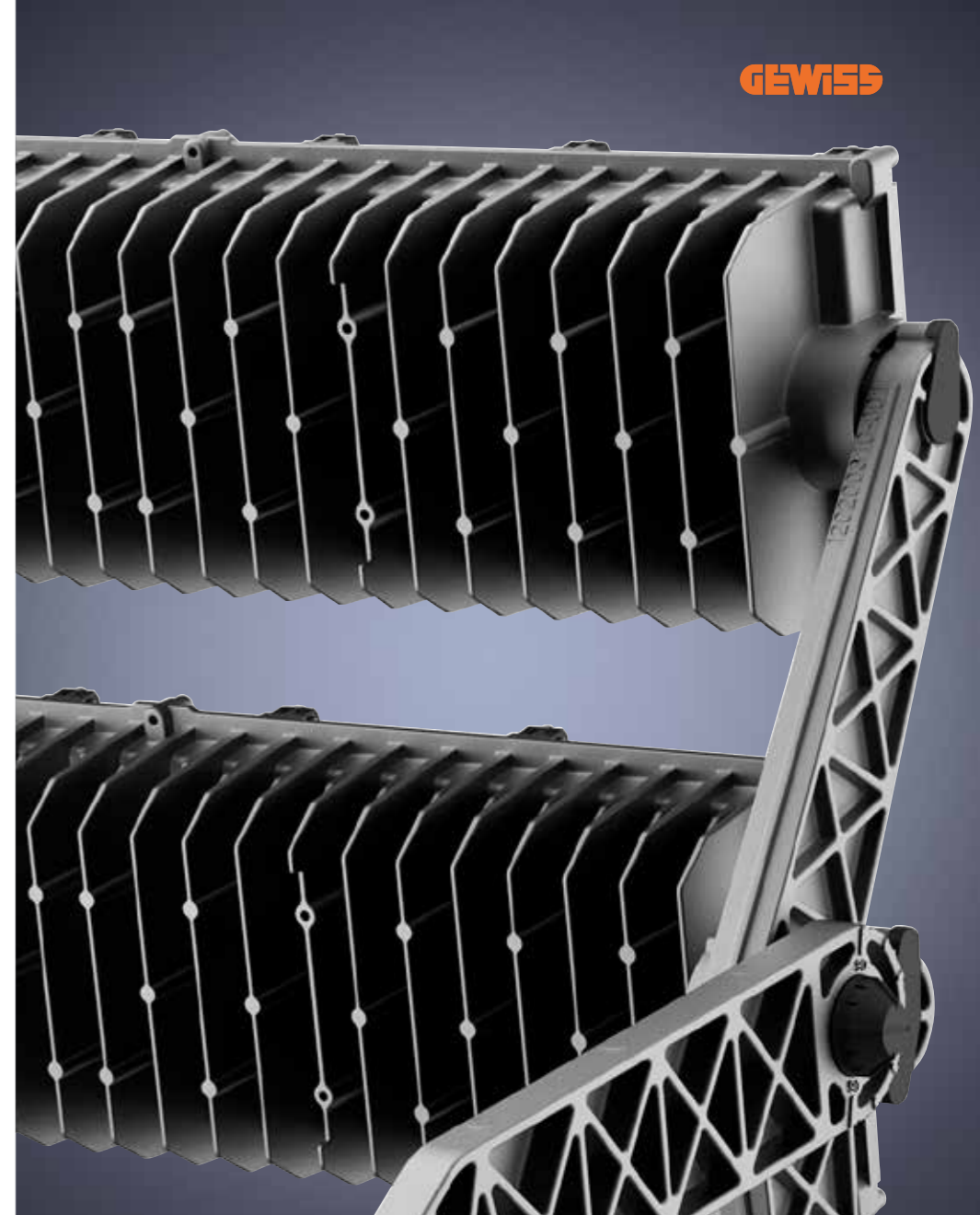
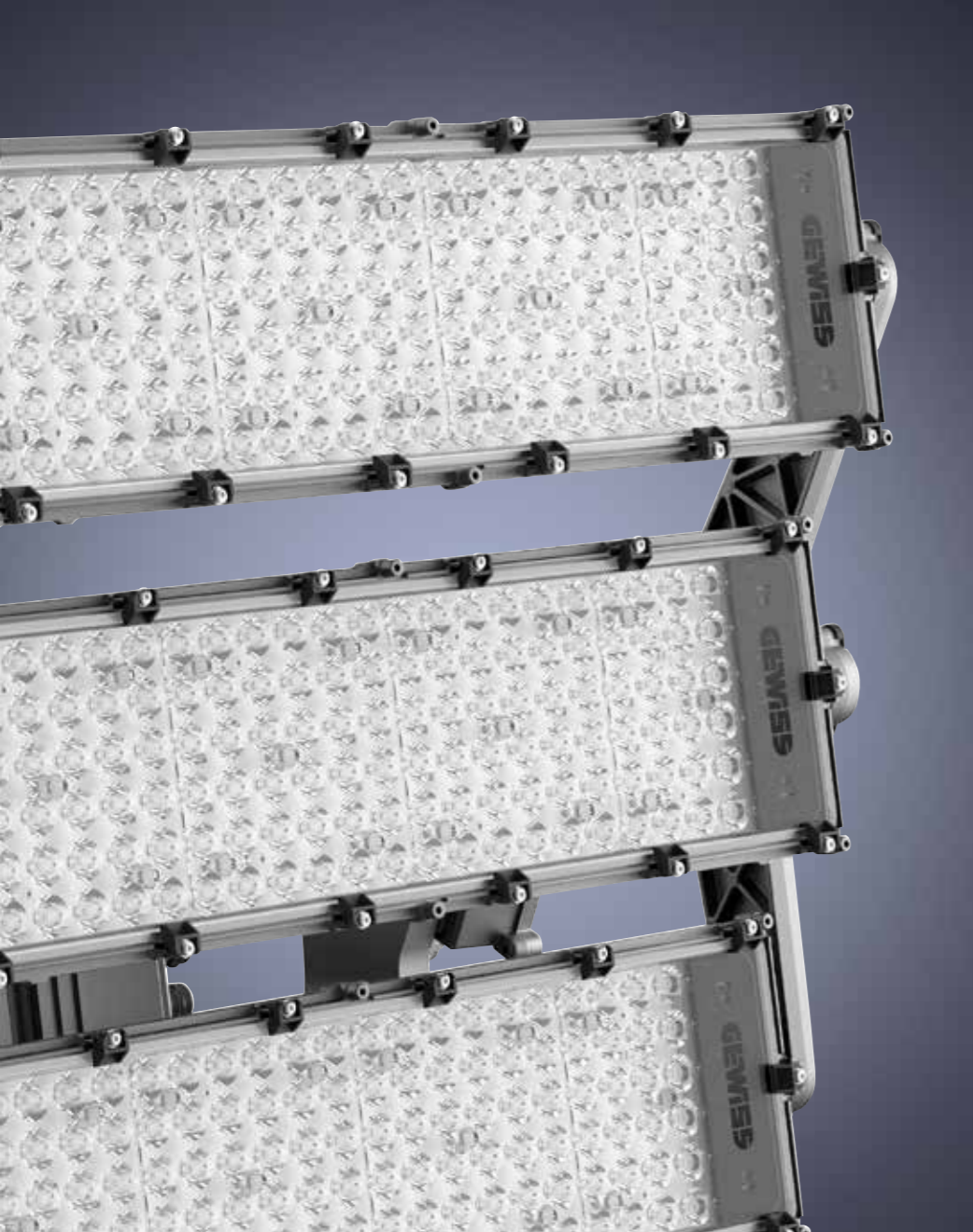
# STADIUMPRO

Stadium PRO is a range of LED floodlights designed to meet the highest standards and lighting performance for installations hosting professional competitions, ensuring visual comfort for both athletes and spectators. Stadium PRO provides

solutions that provide excellent distribution of light both horizontally and vertically, such that competitions can take place while ensuring perfect visibility for race judges, players and cameras and maximum comfort for spectators.

# STADIUMPRO





# STADIUMPRO

## MODULARITY

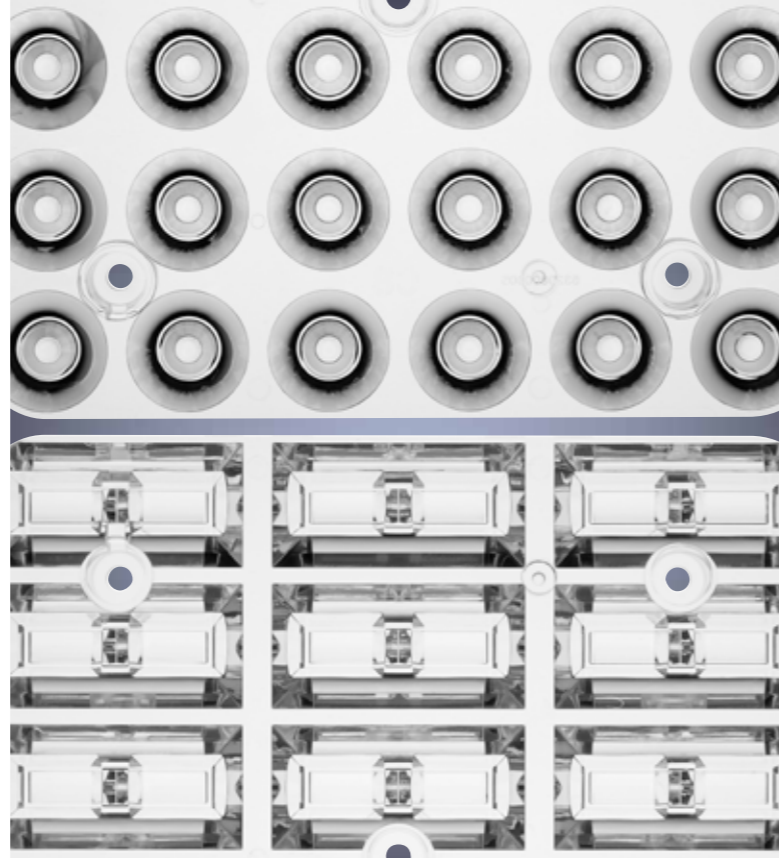
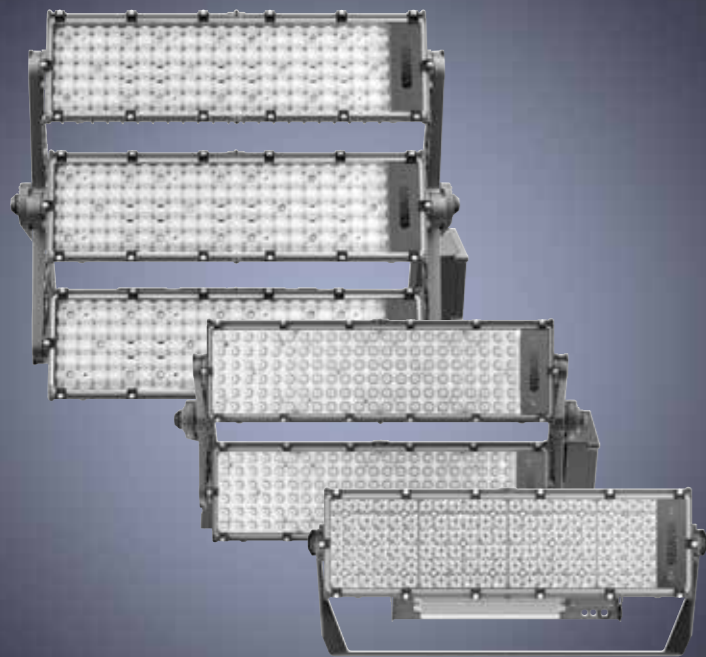
The new Stadium PRO range of LED floodlights has been designed based on the modularity of the optical unit which, thanks to the particular layout which is designed to optimise natural heat sinking, allows maximum lighting performance of the LED both in terms of efficiency and lifetime.

## FLEXIBILITY

The use of the latest technologies and the design of precise and modular optics, designed to meet the needs of high-level sports facilities, has created a range of professional floodlights that are able to guarantee, at the same time, perfect control of both light and luminance, for uncompromising illumination.

## CONNECTIVITY

The new Stadium PRO floodlight range is designed to communicate with INTERACTIVE systems so as to ensure maximum flexibility and control of all functions for the sports facility. Thanks to integration with IoT products, it is therefore possible to monitor consumption, safety and much more.

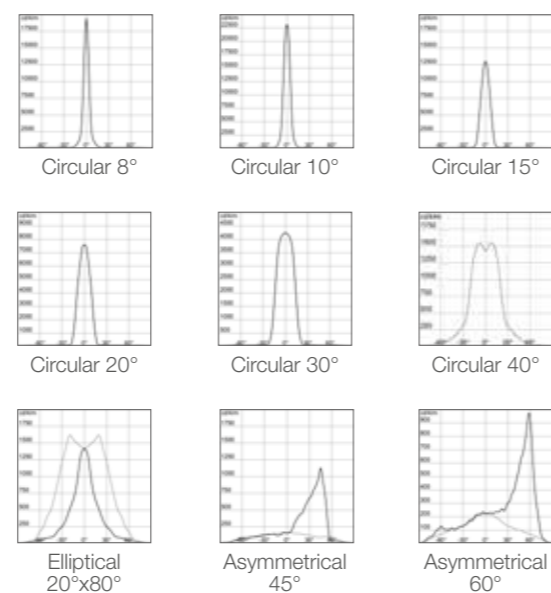


## A complete range

The new high-power LED floodlights Stadium PRO series enlarge the offer by adding to Stadium PRO | 3, two new versions: Stadium PRO | 1 and Stadium PRO | 2. A complete range designed to meet different lighting needs for each sport facility. The Stadium PRO range guarantees high lighting performance and outstanding optical innovations, making sport facility always a cutting-edge place.

## An optic for every requirement

Stadium PRO is designed with a new T.I.R.Ex (Total Internal Reflection Extended) optical system that can meet any professional lighting requirement. In fact, the range includes 9 different types of optics. Narrow-beam optics are designed to meet the lighting needs of sports facilities dedicated to competitive competitions. Asymmetrical optics mainly meet the lighting needs of indoor sports installations or installations where wall mounting or pole mounting with low heights is required. Finally, symmetrical medium and wide beam optics have been designed for outdoor / indoor sport lighting where good uniformity and lighting on the horizontal plane is required.



## Competition lighting

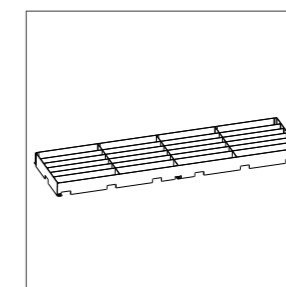
Stadium PRO is designed to illuminate professional sports facilities dedicated to competitions with television recordings in line with TLCl and HDTV standards. For this reason, the latest generation LEDs have been selected with high colour rendering and excellent light quality, up to 3 McAdam steps. Finally, this range of LED floodlights is also available with a DMX power supply that can communicate with other systems for the creation of complex sets and offer maximum flexibility to the sports facility in order to adapt to any type of event.

## Total glare control

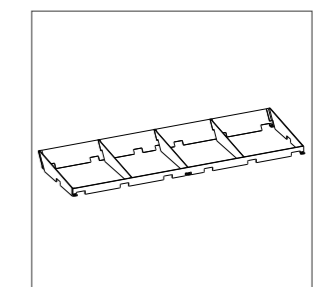
Stadium PRO is developed to ensure maximum lighting performance without compromising the visual comfort of athletes and spectators. Designed to meet the strict requirements of standards for professional competitions with high-definition television recordings, Stadium PRO LED floodlights have concentrated optics with absolute precision that guarantee maximum lighting performance both horizontally and vertically, excellent uniformity and glare control. In addition, the range also has accessories for glare control, such as the visor and the louvre, for installations in difficult contexts where maximum positioning flexibility is not possible.



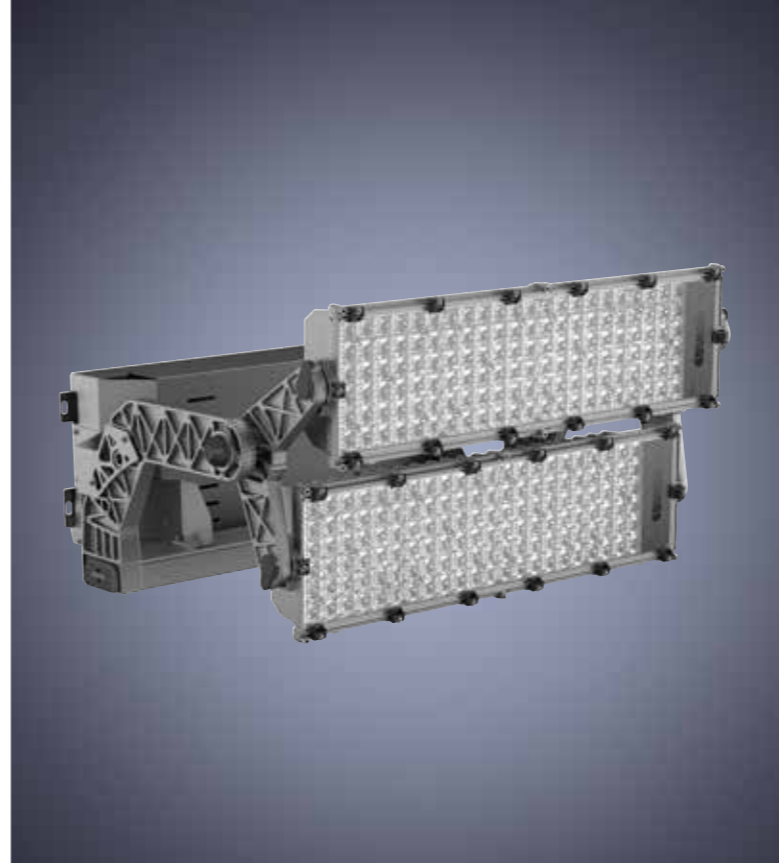
Stadium PRO



Louvre kit



Visor

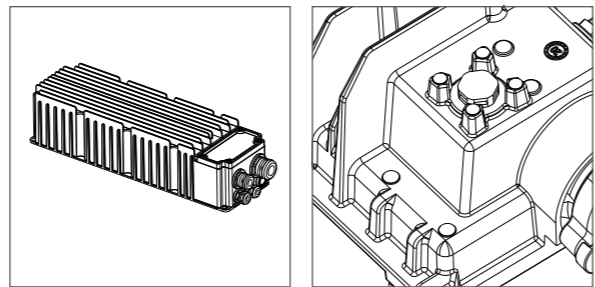


## Multi-purpose lighting

The lighting system of an arena must guarantee a homogeneous distribution and a perfect visibility on the pitch, to avoid any interference that may affect the competition. Arenas are complex facilities and multipurpose where the light must guarantee the safety of spectators and staff maintenance, control of energy consumption and right lighting at different times of the day or depending on the event in progress. The use of LED sources allows not only a reduction in operating costs and maintenance, but also new opportunities in terms of luminous scenographies suitable for different events and spectacles, like shows, concerts and much more.

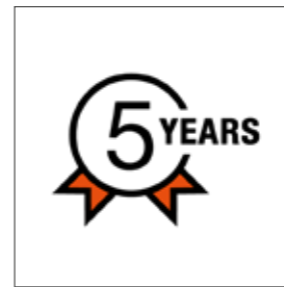
## Reliability and durability of all components

Using a detailed selection process for equipment components, our Research and Development department chooses key elements that meet the highest performance and reliability objectives, for each class of product. The durability of components in a variety of applications is checked in GEWISS certified laboratories, in tests simulating the product life cycle including on LEDs and electronic power supplies. Another example are the ventilation and anti-condensation devices with Gore-Tex® membrane that manage the internal pressure of the equipment for increased reliability, reducing condensation by filtering liquids and other contaminants out to prevent any floodlight malfunction.



## 5 years quality guarantee

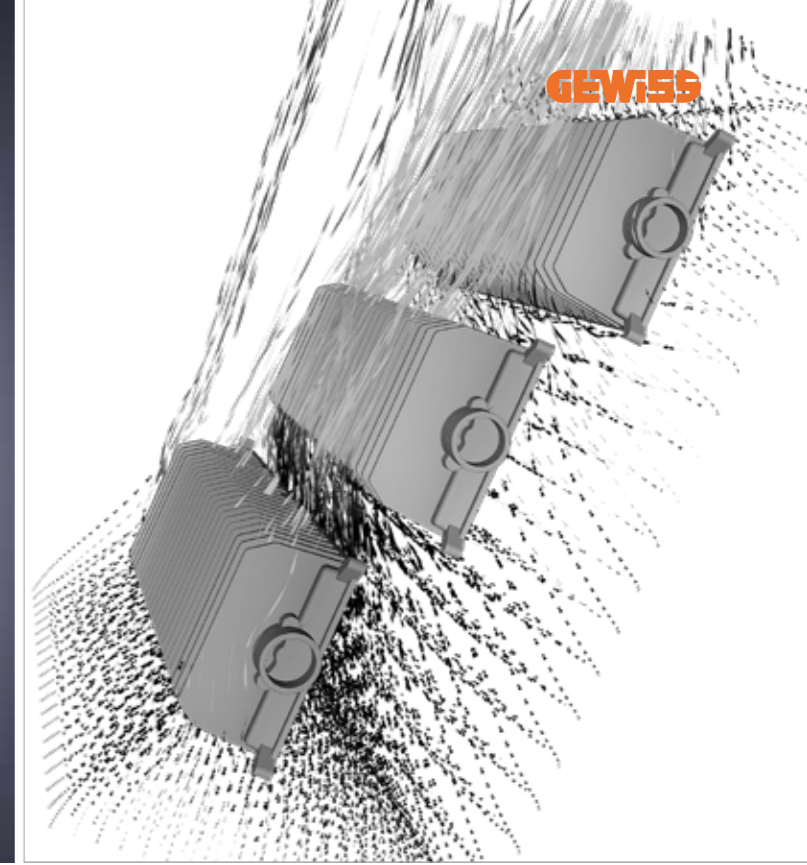
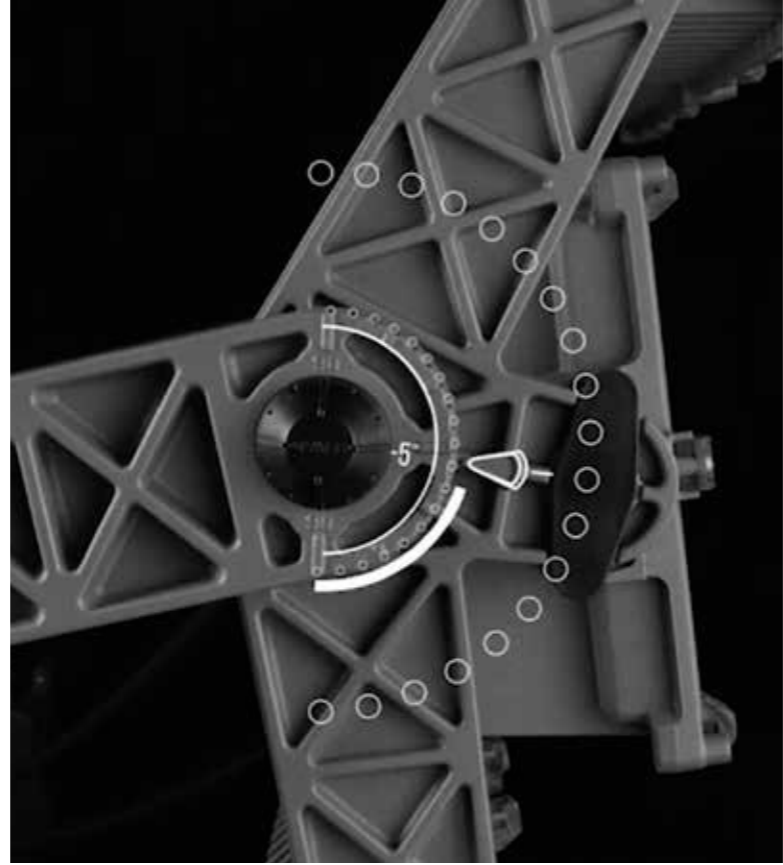
A careful design study has led to the development of systems that provide maximum reliability in any application environment. With the careful selection of next generation LEDs, high performance drivers and dissipation system design, GEWISS guarantees the full Stadium PRO range, for the highest quality and innovation of components and end product, for 5 years. For special projects and applications, product versions with extended warranty can be requested.



## Laboratories of excellence

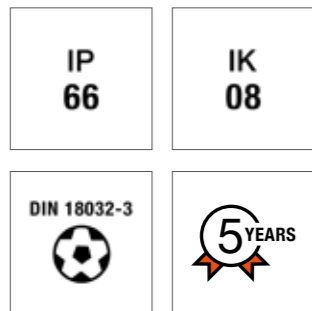
GEWISS laboratories are certified by the IMQ (Institute of Quality) and leading international standards bodies, and have achieved CTF2 certification for Customer Testing Facilities. Within these laboratories, Stadium PRO has undergone the most stringent tests to certify its resistance characteristics, including: saline fog, QUV, IP, IK, Lifetime and performance in extreme temperature conditions. As a result, it has been certified with the CE mark (according to European Community directives: LVD 2014/35/EU - EMC1014/30/ EU - ERP 2009/125/EC) and ENEC (European Norms Electrical Certification). In sports, it has also obtained DIN18032-3 certification, for safety and use without damage if hit by a ball.





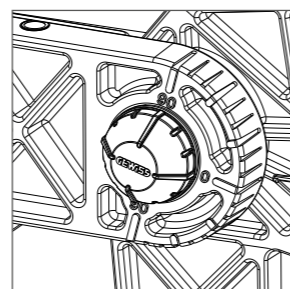
## Exceptional strongness

Stadium PRO is a modern and robust floodlight, with a compact and efficient design, which offers different installation possibilities in any context, even the most critical. The cast aluminium structure and practical connecting system make this floodlight ideal in outdoor and indoor installations. It has been designed to withstand any environmental condition and impact. Meeting international standards of protection ratings and impact resistance, Stadium PRO offers protection from dust and water ingress to IP66 and impact resistance, to IK08 for both the body and tempered glass. The careful choice of materials and electronic components ensures complete safety during operation, guaranteeing resistance to shocks and accidental blows, as well as to thermal shocks and atmospheric agents.



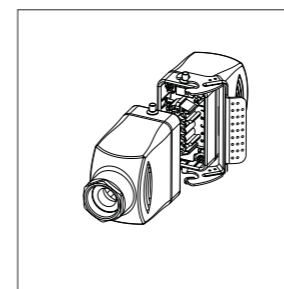
## Double goniometric scale

The floodlight has a goniometric scale integrated on the bracket, for precise and accurate adjustment of the floodlight on the horizontal plane and the housing for the installation of the aiming sight, in order to guarantee ease and precision during the installation and aiming phase of the floodlights, also for inverted mounting. The individual optical modules are also securely fixed and locked using a grub-screw system to ensure directional reliability over time.



## Easy connection

The new connection system allows maximum flexibility. The GEWISS GW-Connect kit ensure a precise and rapid connection of the product to the driver for remote installations. Two different junction boxes are available for flexible management of all drivers. The stainless steel cable glands installed on each module guarantee the maximum IP rating of the seal.



## Perfect thermal management for long-term performance

The new thermal management, design and ergonomics system of the modules, has been specially designed to guarantee a high heat dissipation capacity for a longer life. Indeed Stadium PRO floodlight modules are optimized to allow greater transit of the air flow in the product. This permits efficient heat dissipation, guaranteeing a very long life of the floodlight output and high reliability. With exceptional heat disposal design to minimise the need for maintenance work on electronic components. Surge protection up to 10 KV for greater longevity in outdoor applications.



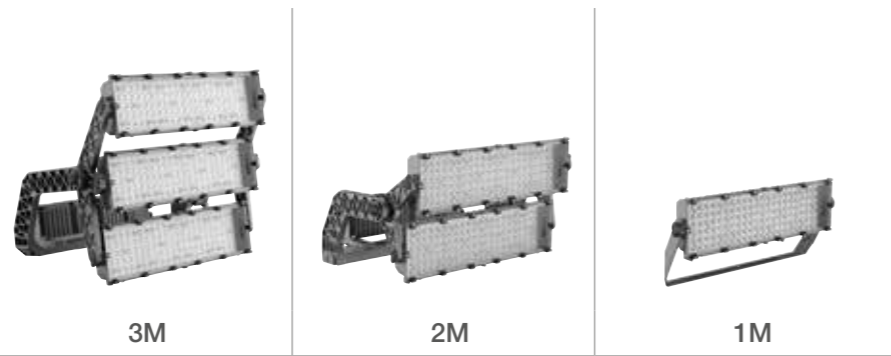
# Advanced optical systems for every application requirement

Name	Photometry	Photo optics	Optical design
Circular 8°			
Circular 10°			
Circular 15°			
Circular 20°			
Circular 30°			

Name	Photometry	Photo optics	Optical design
Circular 40°			
Elliptical 20°x80°			
Asymmetrical 45°			
Asymmetrical 60°			



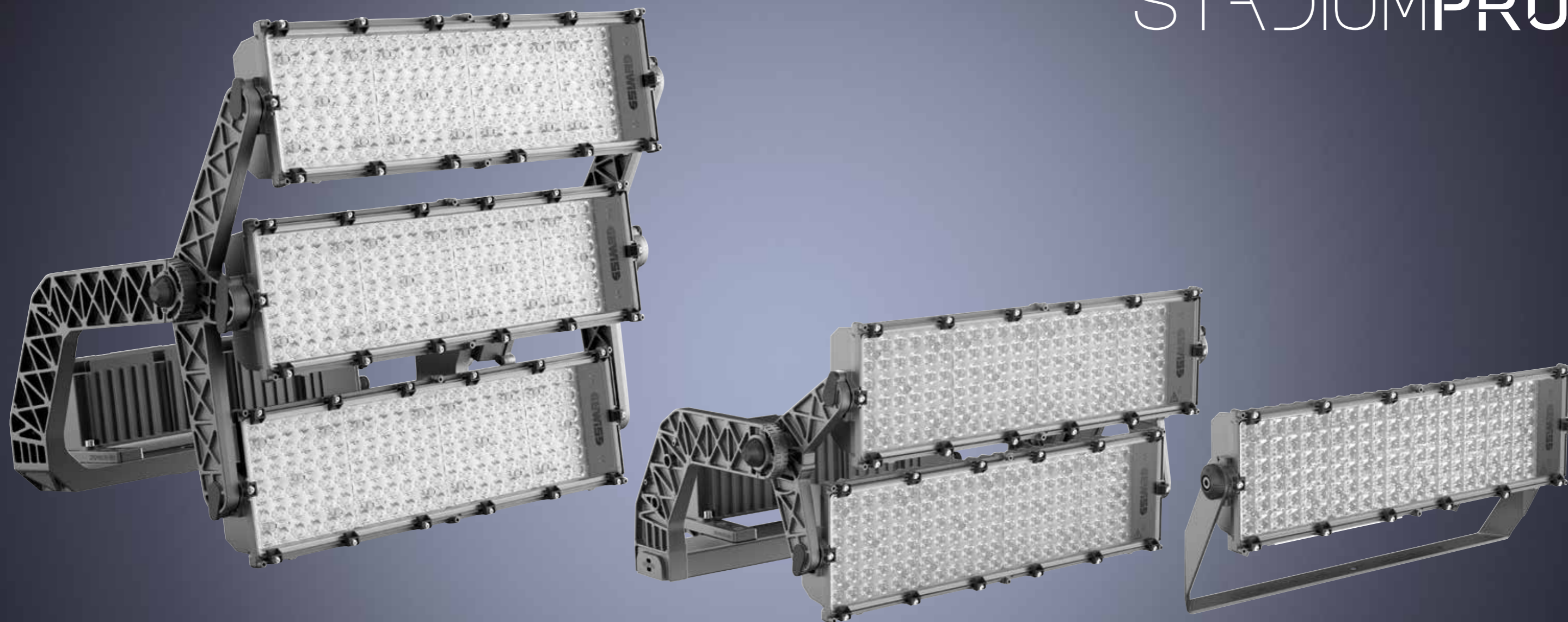
# Technical data



	3M	2M	1M
Insulation class	CL. I		
Protection degree	IP66		
Impact resistance	IK08		
Optics	6 Circular - 2 Asymmetrical - 1 Elliptical		
Power	1450 W	960 W	480 W
Luminous flux	Up to 185 klm	Up to 125 klm	Up to 62 klm
Efficiency	Up to 130 lm/W		
Colour temperature	4.000K - 5.700K		
Colour rendering index (CRI)	CRI>70 - CRI>80 - CRI90 TLCI>80		
Operating temperature	-25°C ÷ +50°C		
Power supply	220÷240V/400V 50/60Hz		
Power supply	DALI2 - DALI - DMX - 0-10V		
Colour	Graphite grey polyester powder coated		
Rotation	With adjustable goniometric scale already assembled to the product		
Cabling	Intergrated box - GW-Connect connector		
Lifetime	L90B10(Tq25°C)=40.000h L80B10(Tq25°C)=75.000h		
Power surge protection	DM 10KV / CM 10KV - DM 6 kV / CM 10 kV		



# STADIUMPRO



Stadium PRO



# Stadium PRO | 3

High-power floodlight for lighting professional sports facilities with television recordings.

Stadium PRO | 3 is a high power LED floodlight, with an LES (light emitting surface) high emission, suitable for lighting sports facilities for professional competitive competitions. The floodlight has a graphite grey finish with trivalent treatment for maximum resistance to oxidation and is equipped with an integrated "self-cleaning" thermal dissipation system. It consists of three modules, each with a venting and non-condensing valve, protected from accidental impacts. The rotation system between the bracket and the optical modules is truncated-conical in aluminium with an integrated goniometer within the bracket for easy orientation control and fixing by means of a grub-screw, which ensure the tightness over time of each individual module. The floodlight is available in 4,000K or 5,700K colour temperatures and CRI>70, CRI>80 or CRI>90 (TLCI>80) colour rendering. The range also includes 6 types of circular optics, from 8° to 40°, 1 symmetrical/Elliptical optic and 2 asymmetric optics. The T.I.R.Ex. optical system developed by GEWISS, with high-transparency PMMA HT lenses, combined with the use of an extra-clear glass screen equipped with anti-reflective nanocoating for the asymmetrical versions, permits total control of the light beam, allowing for wide flexibility in design, with high qualitative and quantitative performance. The power supply box can be fixed on the edge-bracket, or remotely, it is immune to surges of up to 10KV both in RCCB and common mode, with a single cable. The range includes DALI2 or DMX-RDM power supply, to allow maximum flexibility in creating even complex lighting scenes, as well as single drivers in DALI or 0-10V to improve use in scenes with simpler requirements.

- IK 08
- IP 66
- EN
- 5 YEARS
- Video camera icon
- DIN 18032-3
- Soccer ball icon

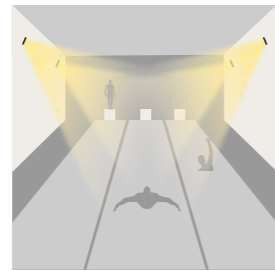
## APPLICATIONS



Arena



Sport Outdoor

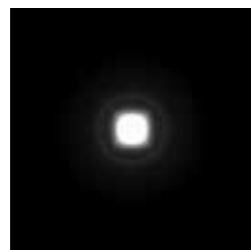


Sport Indoor

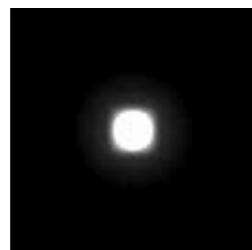
## LIGHT BEAM DISTRIBUTION



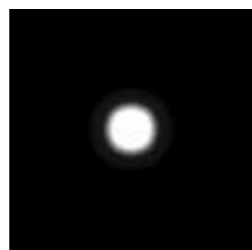
Circular 8°



Circular 10°



Circular 15°



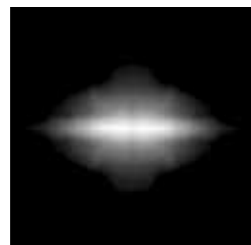
Circular 20°



Circular 30°



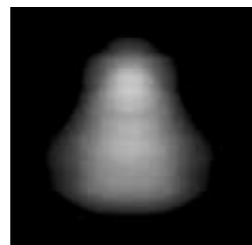
Circular 40°



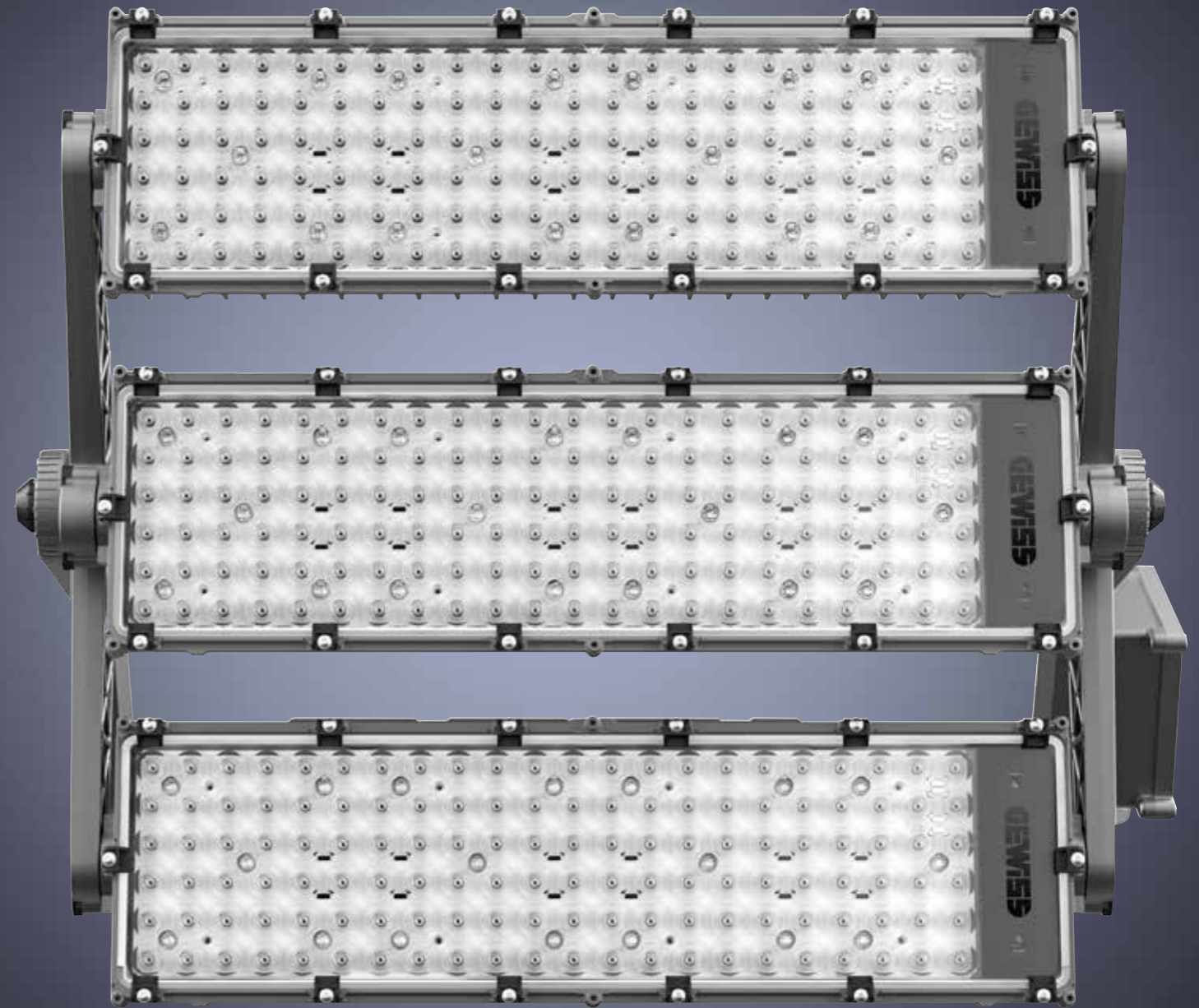
Elliptical 20°x80°

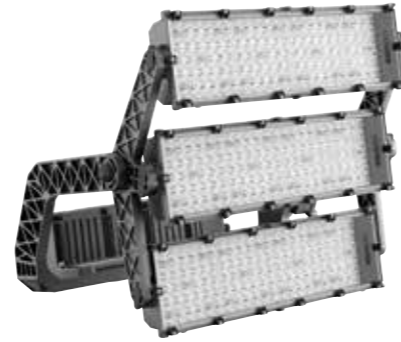


Asymmetrical 45°

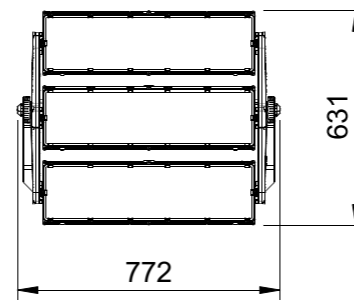


Asymmetrical 60°





SIZE



GENERAL INFORMATION

Application	Indoor/Outdoor
Colour	Graphite Grey
Source	LED - no replaceable
Power consumption	1450W
Lifetime	L90B10(Tq25°C)=40.000h L80B10(Tq25°C)=75.000h
Weight	30 Kg
Warranty	5 years
Operating temperature	-25°C ÷ +50°C

OPTIC AND LIGHTING FEATURES

Optics	6 Circular - 2 Asymmetrical - 1 Elliptical
Luminous flux	Up to 185Klm
Luminous efficiency	Up to 130 lm/W
Colour temperature	4000K - 5700K
Colour rendering index	CRI >70 - CRI >80 - CRI 90 TLCI >80
Standard deviation colour matching	CRI > 70 SDCM = 5 CRI > 80 SDCM = 3 CRI 90 SDCM = 3

MATERIALS

Body	Die-cast aluminium
Screen	Tempered glass front with 4mm thickness / anti-reflective nanocoating
Optical unit	T.I.R.Ex. PMMA HT lens
External screws	Stainless steel
Colour finish	OUTDOOR Polyester powder coating

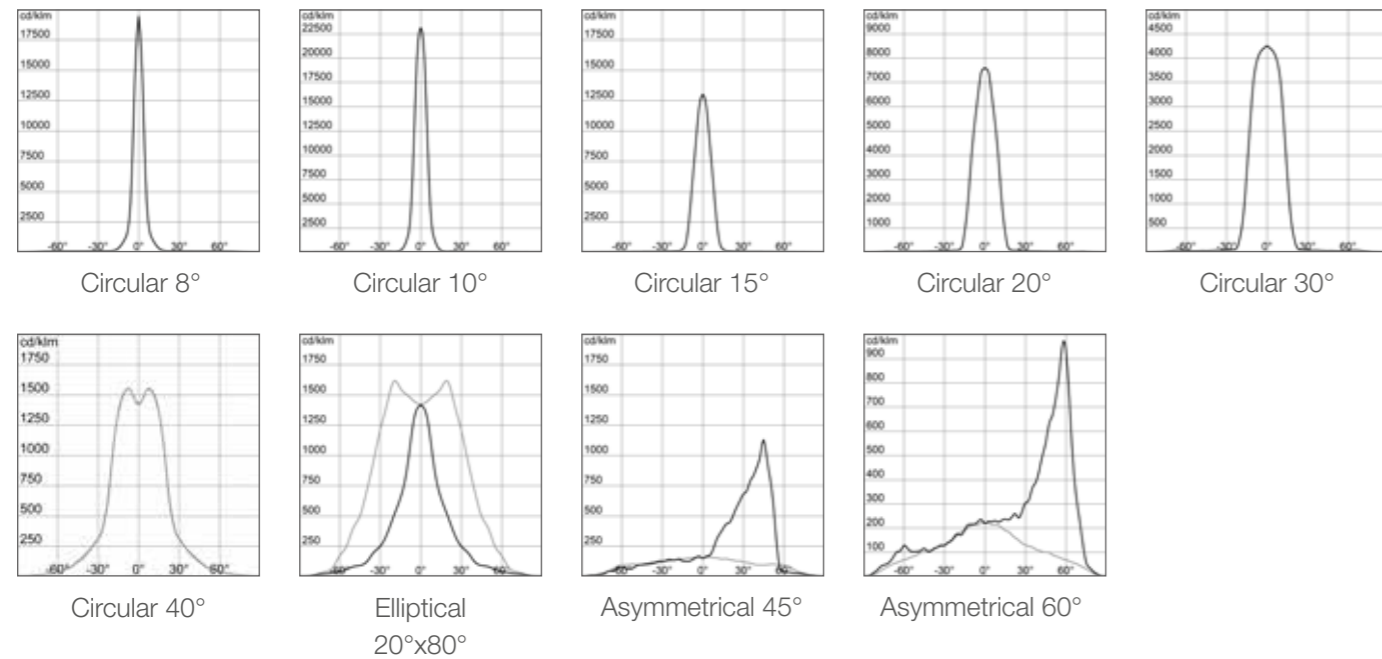
INSTALLATION AND MAINTENANCE

Installation and assembly type	Lighting tower - Wall
Inclination	With adjustable goniometric scale already assembled to the product
Cabling	GW-Connect kit between projector and power supply unit
Driver box	External
Maximum area exposed to wind	0,36 m <sup>2</sup>

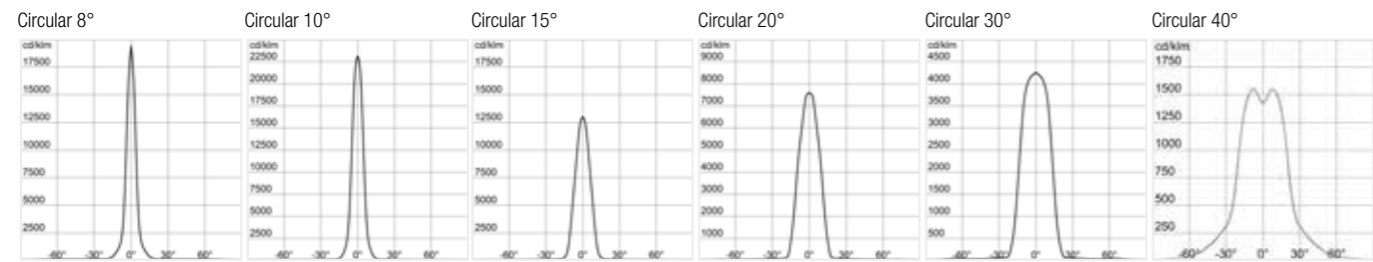
ELECTRICAL FEATURES AND LIGHT MANAGEMENT

Power voltage	220÷240V/400V
Rated frequency	50/60Hz
Power supply	Must be ordered separately
Protection device	DM 10KV / CM 10KV - DM 6KV / CM 10KV
Control system	DALI2 - DALI - DMX - 0-10V
Insulation class	Class I

PHOTOMETRY



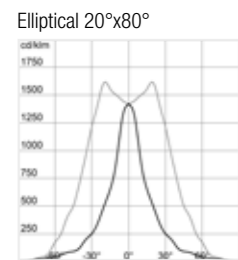
Stadium PRO | 3 - Circular Optic



CLASS I

Code	Optics	Colour Rend. Index (CRI)	Colour temp. (CCT)
GWP3331AN740	Circular 8°	CRI>70	4.000K
GWP3331AN757	Circular 8°	CRI>70	5.700K
GWP3331AN840	Circular 8°	CRI>80	4.000K
GWP3331AN857	Circular 8°	CRI>80	5.700K
GWP3331AN957	Circular 8°	CRI>90 TLCl>80	5.700K
GWP3331AM740	Circular 10°	CRI>70	4.000K
GWP3331AM757	Circular 10°	CRI>70	5.700K
GWP3331AM840	Circular 10°	CRI>80	4.000K
GWP3331AM857	Circular 10°	CRI>80	5.700K
GWP3331AM957	Circular 10°	CRI>90 TLCl>80	5.700K
GWP3331AL740	Circular 15°	CRI>70	4.000K
GWP3331AL757	Circular 15°	CRI>70	5.700K
GWP3331AL840	Circular 15°	CRI>80	4.000K
GWP3331AL857	Circular 15°	CRI>80	5.700K
GWP3331AL957	Circular 15°	CRI>90 TLCl>80	5.700K
GWP3331AH740	Circular 20°	CRI>70	4.000K
GWP3331AH757	Circular 20°	CRI>70	5.700K
GWP3331AH840	Circular 20°	CRI>80	4.000K
GWP3331AH857	Circular 20°	CRI>80	5.700K
GWP3331AH957	Circular 20°	CRI>90 TLCl>80	5.700K
GWP3331AG740	Circular 30°	CRI>70	4.000K
GWP3331AG757	Circular 30°	CRI>70	5.700K
GWP3331AG840	Circular 30°	CRI>80	4.000K
GWP3331AG857	Circular 30°	CRI>80	5.700K
GWP3331AG957	Circular 30°	CRI>90 TLCl>80	5.700K
GWP3331AF740	Circular 40°	CRI>70	4.000K
GWP3331AF757	Circular 40°	CRI>70	5.700K
GWP3331AF840	Circular 40°	CRI>80	4.000K
GWP3331AF857	Circular 40°	CRI>80	5.700K
GWP3331AF957	Circular 40°	CRI>90 TLCl>80	5.700K

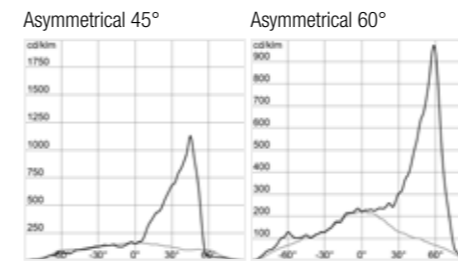
Stadium PRO | 3 - Elliptical Optic



CLASS I

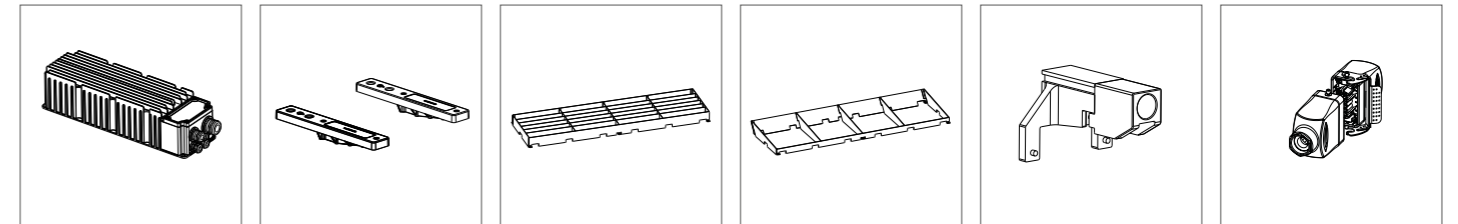
Code	Optics	Colour Rend. Index (CRI)	Colour temp. (CCT)
GWP3331AA740	Elliptical 20°x80°	CRI>70	4.000K
GWP3331AA757	Elliptical 20°x80°	CRI>70	5.700K
GWP3331AA840	Elliptical 20°x80°	CRI>80	4.000K
GWP3331AA857	Elliptical 20°x80°	CRI>80	5.700K
GWP3331AA957	Elliptical 20°x80°	CRI>90 TLCl>80	5.700K

Stadium PRO | 3 - Asymmetrical Optic



CLASS I

Code	Optics	Colour Rend. Index (CRI)	Colour temp. (CCT)
GWP3331AB740	Asymmetrical 45°	CRI>70	4.000K
GWP3331AB757	Asymmetrical 45°	CRI>70	5.700K
GWP3331AB840	Asymmetrical 45°	CRI>80	4.000K
GWP3331AB857	Asymmetrical 45°	CRI>80	5.700K
GWP3331AB957	Asymmetrical 45°	CRI>90 TLCl>80	5.700K
GWP3331AC740	Asymmetrical 60°	CRI>70	4.000K
GWP3331AC757	Asymmetrical 60°	CRI>70	5.700K
GWP3331AC840	Asymmetrical 60°	CRI>80	4.000K
GWP3331AC857	Asymmetrical 60°	CRI>80	5.700K
GWP3331AC957	Asymmetrical 60°	CRI>90 TLCl>80	5.700K



POWER SUPPLY UNIT    DRIVER SUPPORT    LOUVRE    VISOR    SUPPORT    CONNECTOR

Code	Description
GWP30031	DALI POWER SUPPLY UNIT 230V-400V
GWP30032	DMX POWER SUPPLY UNIT 230V-400V
GWP30030	POWER SUPPLY UNIT CONNECTION KIT
GWP30033	DALI BOX DRIVER
GWP30035	0-10V BOX DRIVER
GWP30015	DALI SINGLE DRIVER
GWP30017	0-10V SINGLE DRIVER
GWP30037	CONNECTION KIT FOR 3 SINGLE DRIVERS
GWP30001	DRIVER SUPPORT BRACKET
GWP30005	DRIVER BOX SUPPORT BRACKET
GWP30013	3 SINGLE DRIVER SUPPORT BRACKET
GWP20004	GW CONNECT CONNECTOR 12 POLES
GWP20005	CABLE SKEIN (50mt)
GWP30002	LOUVRE
GWP30003	VISOR
GWP30004	RED DOT SUPPORT
GWP30006	CIRCULAR-ELLIPTICAL GLASS REPLACEMENT KIT
GWP30009	ASYMMETRICAL GLASS REPLACEMENT KIT



# Stadium PRO | 2

High-power floodlight for lighting professional and semi-professional sports facilities.

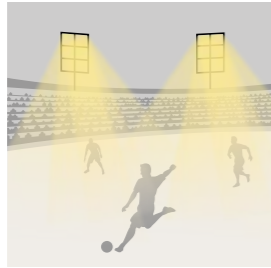
Stadium PRO | 2 is a high power LED floodlight, with an LES (light emitted surface) high emission, suitable for lighting sports facilities for professional competitive competitions. The floodlight has a graphite grey finish with trivalent treatment for maximum resistance to oxidation and is equipped with an integrated "self-cleaning" thermal dissipation system. It consists of two modules, each with a venting and non-condensing valve, protected from accidental impacts. The rotation system between the bracket and the optical modules is truncated-conical in aluminium with an integrated goniometer within the bracket for easy orientation control and fixing by means of a grub-screw, which ensure the tightness over time of each individual module. The floodlight is available in 4,000K or 5,700K colour temperatures and CRI>70, CRI>80 or CRI>90 (TLCI>80) colour rendering. The range also includes 6 types of circular optics, from 8° to 40°, 1 symmetrical/Elliptical optic and 2 asymmetric optics. The T.I.R.Ex. optical system developed by GEWISS, with high-transparency PMMA HT lenses, combined with the use of an extra-clear glass screen equipped with anti-reflective nanocoating for the asymmetrical versions, permits total control of the light beam, allowing for wide flexibility in design, with high qualitative and quantitative performance. The power supply box can be fixed on the edge-bracket, or remotely, it is immune to surges of up to 10KV both in RCCB and common mode, with a single cable. The range includes DALI2 or DMX-RDM power supply, to allow maximum flexibility in creating even complex lighting scenes, as well as single drivers in DALI or 0-10V to improve use in scenes with simpler requirements.

- IK 08
- IP 66
- EN
- 5 YEARS
- DMX
- DIN 18032-3

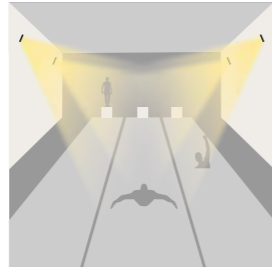
## APPLICATIONS



Sport Area



Arena

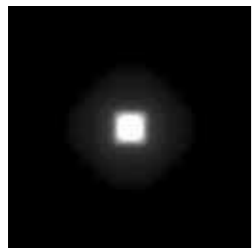


Sport Indoor



Sport Outdoor

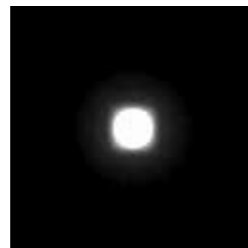
## LIGHT BEAM DISTRIBUTION



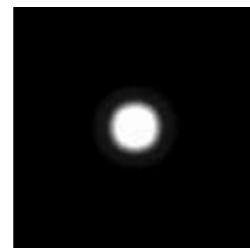
Circular 8°



Circular 10°



Circular 15°



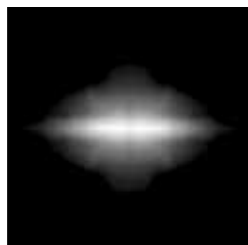
Circular 20°



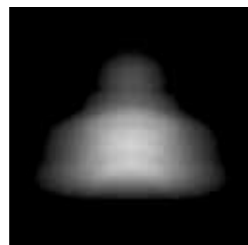
Circular 30°



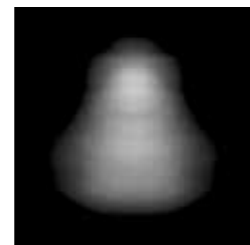
Circular 40°



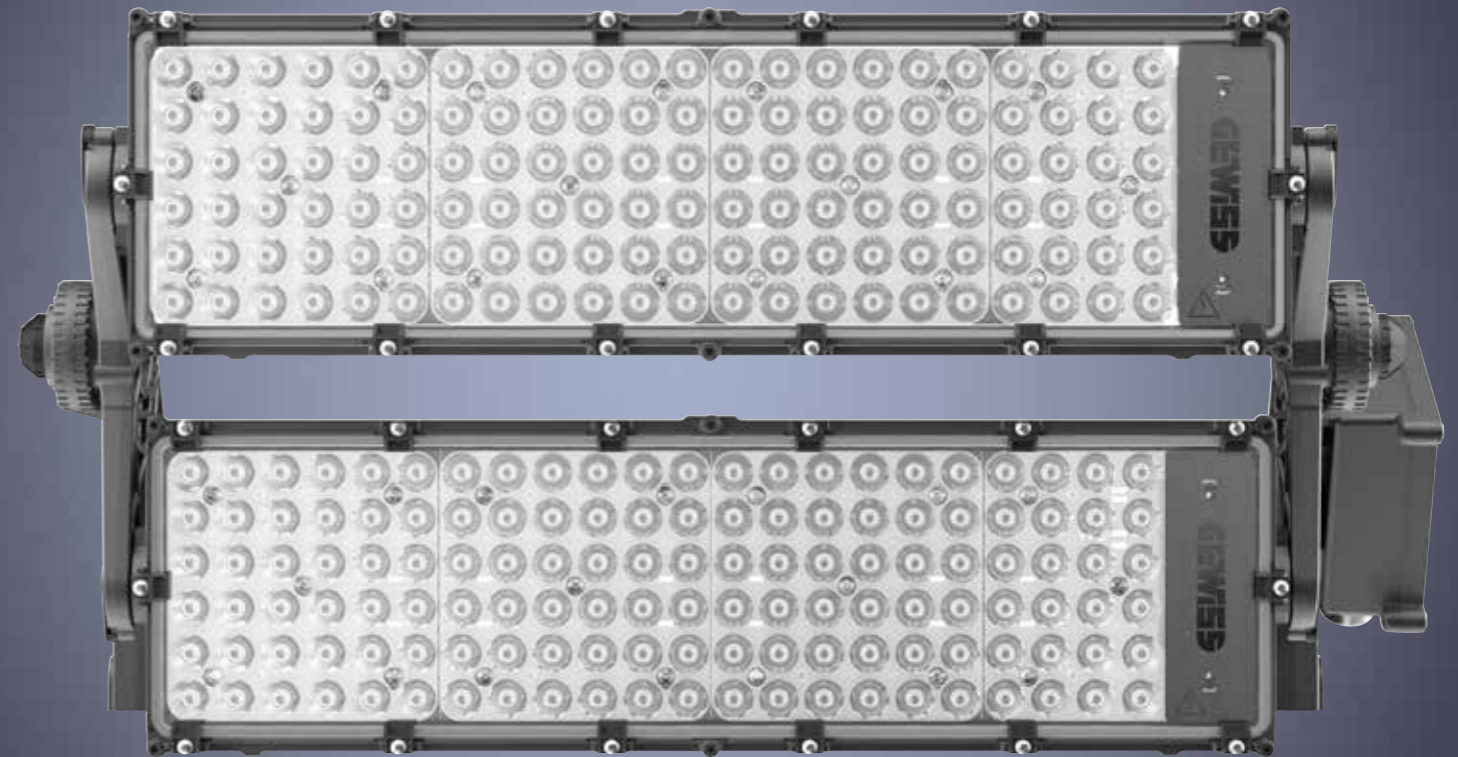
Elliptical 20°x80°

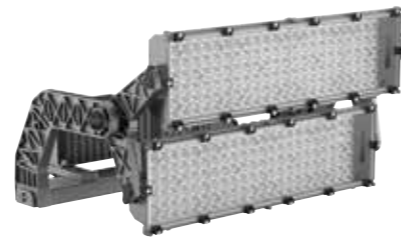


Asymmetrical 45°

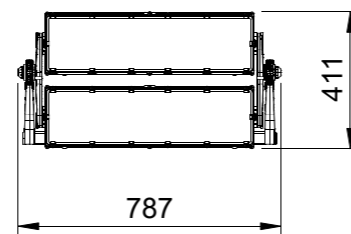


Asymmetrical 60°





SIZE



GENERAL INFORMATION

Application	Indoor/Outdoor
Colour	Graphite Grey
Source	LED - no replaceable
Power consumption	960W
Lifetime	L90B10(Tq25°C)=40.000h L80B10(Tq25°C)=75.000h
Weight	18 Kg
Warranty	5 years
Operating temperature	-25°C ÷ +50°C

OPTIC AND LIGHTING FEATURES

Optics	6 Circular - 2 Asymmetrical - 1 Elliptical
Luminous flux	Up to 125Klm
Luminous efficiency	Up to 130 lm/W
Colour temperature	4000K - 5700K
Colour rendering index	CRI>70 - CRI>80 - CRI90 TLCI>80 CRI>70 SDCM = 5 CRI>80 SDCM = 3 CRI 90 SDCM = 3

MATERIALS

Body	Die-cast aluminium
Screen	Front glass panel 4 mm tempered glass / anti-reflective nanocoating
Optical unit	T.I.R.Ex. PMMA HT lenses
External screws	Stainless steel
Colour finish	OUTDOOR Polyester powder coating

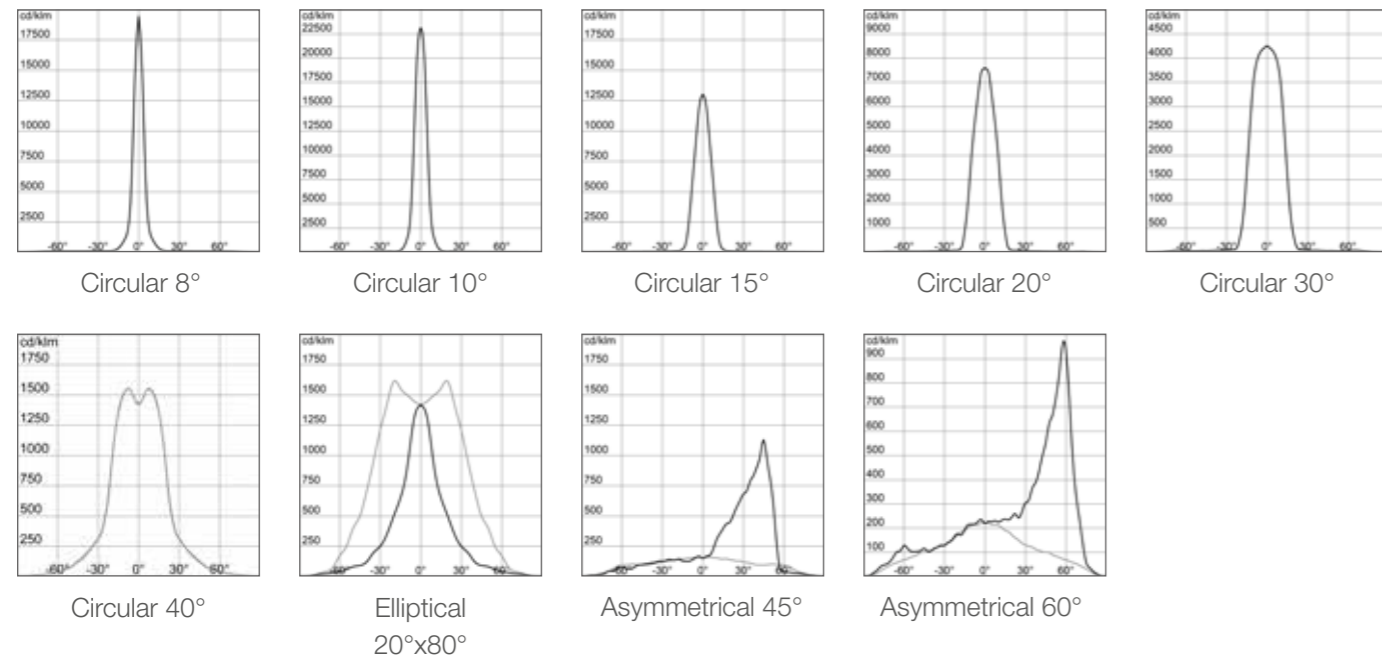
INSTALLATION AND MAINTENANCE

Installation and assembly type	Lighting tower - Wall
Inclination	With adjustable goniometric scale already assembled to the product
Cabling	GW-Connect kit between projector and power supply unit
Driver box	External
Maximum area exposed to wind	0,24 m <sup>2</sup>

ELECTRICAL FEATURES AND LIGHT MANAGEMENT

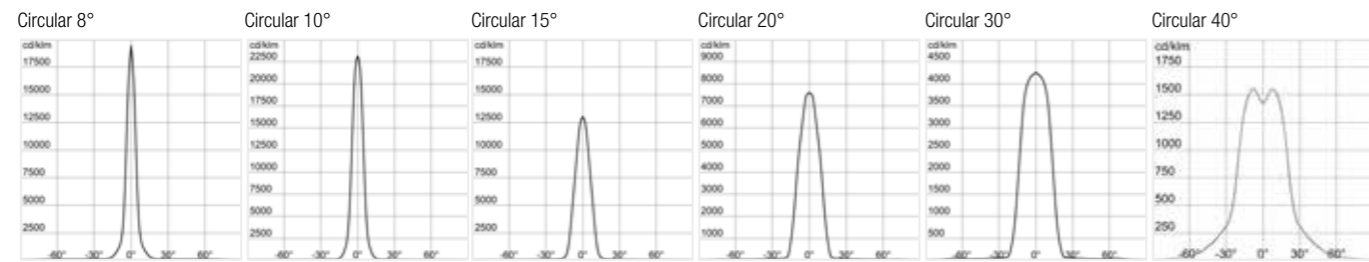
Power voltage	220÷240V/400V
Rated frequency	50/60Hz
Power supply	Must be ordered separately
Protection device	DM 10KV / CM 10KV - DM 6KV / CM 10KV
Control system	DALI2 - DALI - DMX - 0-10V
Insulation class	Class I

PHOTOMETRY





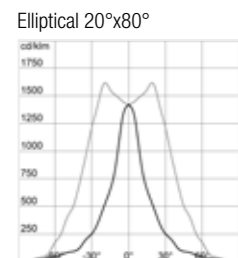
Stadium PRO | 2 - Circular Optic



CLASS I

Code	Optics	Colour Rend. Index (CRI)	Colour temp. (CCT)
GWP3231AN740	Circular 8°	CRI>70	4.000K
GWP3231AN757	Circular 8°	CRI>70	5.700K
GWP3231AN840	Circular 8°	CRI>80	4.000K
GWP3231AN857	Circular 8°	CRI>80	5.700K
GWP3231AN957	Circular 8°	CRI>90 TLCl>80	5.700K
GWP3231AM740	Circular 10°	CRI>70	4.000K
GWP3231AM757	Circular 10°	CRI>70	5.700K
GWP3231AM840	Circular 10°	CRI>80	4.000K
GWP3231AM857	Circular 10°	CRI>80	5.700K
GWP3231AM957	Circular 10°	CRI>90 TLCl>80	5.700K
GWP3231AL740	Circular 15°	CRI>70	4.000K
GWP3231AL757	Circular 15°	CRI>70	5.700K
GWP3231AL840	Circular 15°	CRI>80	4.000K
GWP3231AL857	Circular 15°	CRI>80	5.700K
GWP3231AL957	Circular 15°	CRI>90 TLCl>80	5.700K
GWP3231AH740	Circular 20°	CRI>70	4.000K
GWP3231AH757	Circular 20°	CRI>70	5.700K
GWP3231AH840	Circular 20°	CRI>80	4.000K
GWP3231AH857	Circular 20°	CRI>80	5.700K
GWP3231AH957	Circular 20°	CRI>90 TLCl>80	5.700K
GWP3231AG740	Circular 30°	CRI>70	4.000K
GWP3231AG757	Circular 30°	CRI>70	5.700K
GWP3231AG840	Circular 30°	CRI>80	4.000K
GWP3231AG857	Circular 30°	CRI>80	5.700K
GWP3231AG957	Circular 30°	CRI>90 TLCl>80	5.700K
GWP3231AF740	Circular 40°	CRI>70	4.000K
GWP3231AF757	Circular 40°	CRI>70	5.700K
GWP3231AF840	Circular 40°	CRI>80	4.000K
GWP3231AF857	Circular 40°	CRI>80	5.700K
GWP3231AF957	Circular 40°	CRI>90 TLCl>80	5.700K

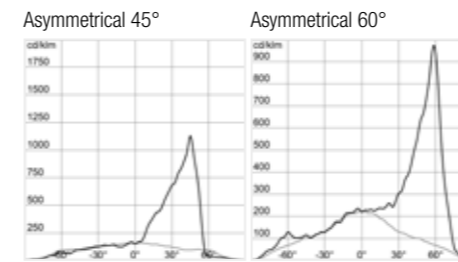
Stadium PRO | 2 - Elliptical Optic



CLASS I

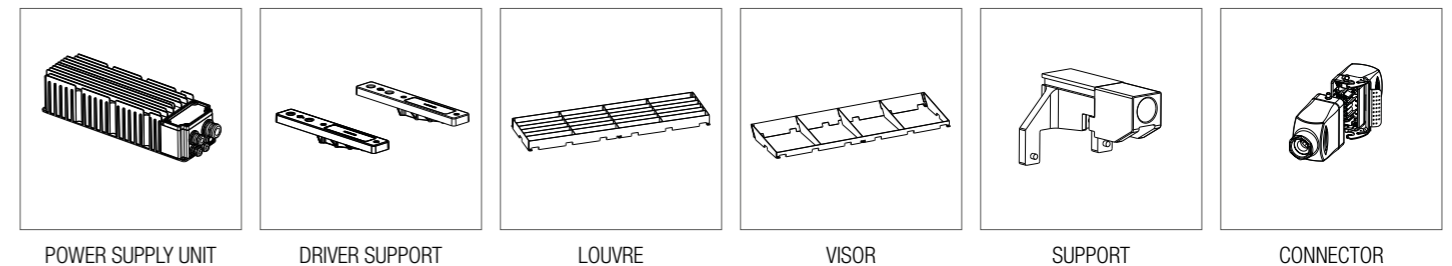
Code	Optics	Colour Rend. Index (CRI)	Colour temp. (CCT)
GWP3231AA740	Elliptical 20°x80°	CRI>70	4.000K
GWP3231AA757	Elliptical 20°x80°	CRI>70	5.700K
GWP3231AA840	Elliptical 20°x80°	CRI>80	4.000K
GWP3231AA857	Elliptical 20°x80°	CRI>80	5.700K
GWP3231AA957	Elliptical 20°x80°	CRI>90 TLCl>80	5.700K

Stadium PRO | 2 - Asymmetrical Optic



CLASS I

Code	Optics	Colour Rend. Index (CRI)	Colour temp. (CCT)
GWP3231AB740	Asymmetrical 45°	CRI>70	4.000K
GWP3231AB757	Asymmetrical 45°	CRI>70	5.700K
GWP3231AB840	Asymmetrical 45°	CRI>80	4.000K
GWP3231AB857	Asymmetrical 45°	CRI>80	5.700K
GWP3231AB957	Asymmetrical 45°	CRI>90 TLCl>80	5.700K
GWP3231AC740	Asymmetrical 60°	CRI>70	4.000K
GWP3231AC757	Asymmetrical 60°	CRI>70	5.700K
GWP3231AC840	Asymmetrical 60°	CRI>80	4.000K
GWP3231AC857	Asymmetrical 60°	CRI>80	5.700K
GWP3231AC957	Asymmetrical 60°	CRI>90 TLCl>80	5.700K



Code	Description
GWP30021	DALI POWER SUPPLY UNIT 230V-400V
GWP30022	DMX POWER SUPPLY UNIT 230V-400V
GWP30020	POWER SUPPLY UNIT CONNECTION KIT
GWP30023	DALI BOX DRIVER
GWP30025	0-10V BOX DRIVER
GWP30015	DALI SINGLE DRIVER
GWP30017	0-10V SINGLE DRIVER
GWP30027	CONNECTION KIT FOR 2 SINGLE DRIVERS
GWP30001	DRIVER SUPPORT BRACKET
GWP30007	DRIVER BOX SUPPORT BRACKET
GWP30012	2 SINGLE DRIVER SUPPORT BRACKET
GWP30008	GW CONNECT CONNECTOR 6 POLES
GWP20005	CABLE SKEIN (50mt)
GWP30002	LOUVRE
GWP30003	VISOR
GWP30004	RED DOT SUPPORT
GWP30006	CIRCULAR-ELLIPTICAL GLASS REPLACEMENT KIT
GWP30009	ASYMMETRICAL GLASS REPLACEMENT KIT



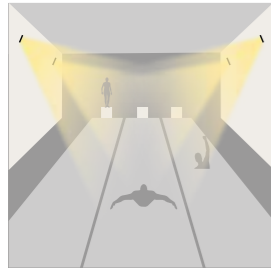
# Stadium PRO | 1

High power floodlight for lighting small sports facilities

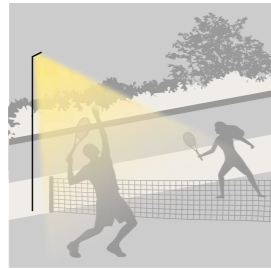
Stadium PRO | 1 is a high power LED floodlight, with an LES (light emitted surface) high emission, suitable for lighting of small / medium sports facilities. The floodlight has a graphite grey finish with trivalent treatment for maximum resistance to oxidation and is equipped with an integrated "self-cleaning" thermal dissipation system. It consists of one module, with a venting and non-condensing valve, protected from accidental impacts. The bracket is made of hot-dip galvanized steel fixed to the module by means of a screw. The orientation system is guaranteed by a integrated goniometer scale on the bracket, which facilitates the pointing phases during installation. The floodlight is available in 4,000K or 5,700K colour temperatures and CRI>70, CRI>80 or CRI>90 (TLCI>80) colour rendering. The range also includes 6 types of circular optics, from 8° to 40°, 1 symmetrical/Elliptical optic and 2 asymmetric optics. The T.I.R.Ex. optical system developed by GEWISS, with high-transparency PMMA HT lenses, combined with the use of an extra-clear glass screen equipped with anti-reflective nanocoating for the asymmetrical versions, permits total control of the light beam, allowing for wide flexibility in design, with high qualitative and quantitative performance. The luminaire is available in a remote driver version as well as with the power supply unit fixed to the rear of the heat sink and it is adjustable to optimize heat dissipation depending on the orientation of the module. The drivers are compatible with different management protocols (DMX-RDM, DALI, 0-10V) to allow maximum flexibility of use in the creation of even complex light sets. It is immune to surges of up to 6KV in RCCB mode and 10KV in common mode.

- IK 08
- IP 66
- EN
- 5 YEARS
- DMX-RDM, DALI, 0-10V
- DIN 18032-3

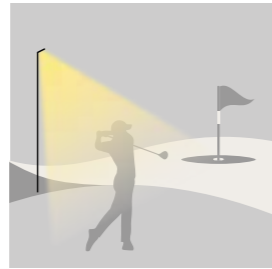
## APPLICATIONS



Sport Indoor



Sport Outdoor

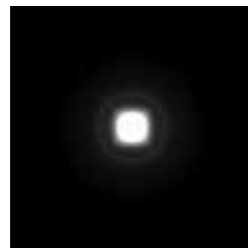


Sport Area

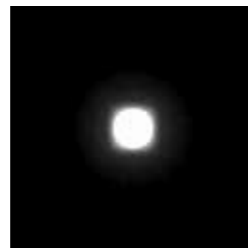
## LIGHT BEAM DISTRIBUTION



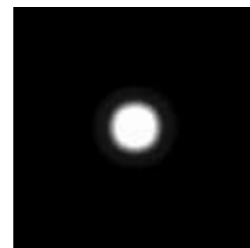
Circular 8°



Circular 10°



Circular 15°



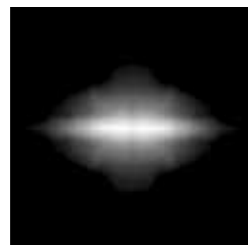
Circular 20°



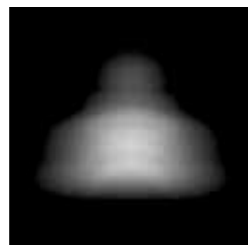
Circular 30°



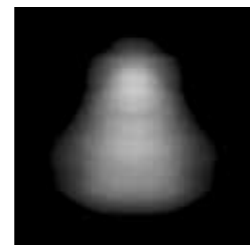
Circular 40°



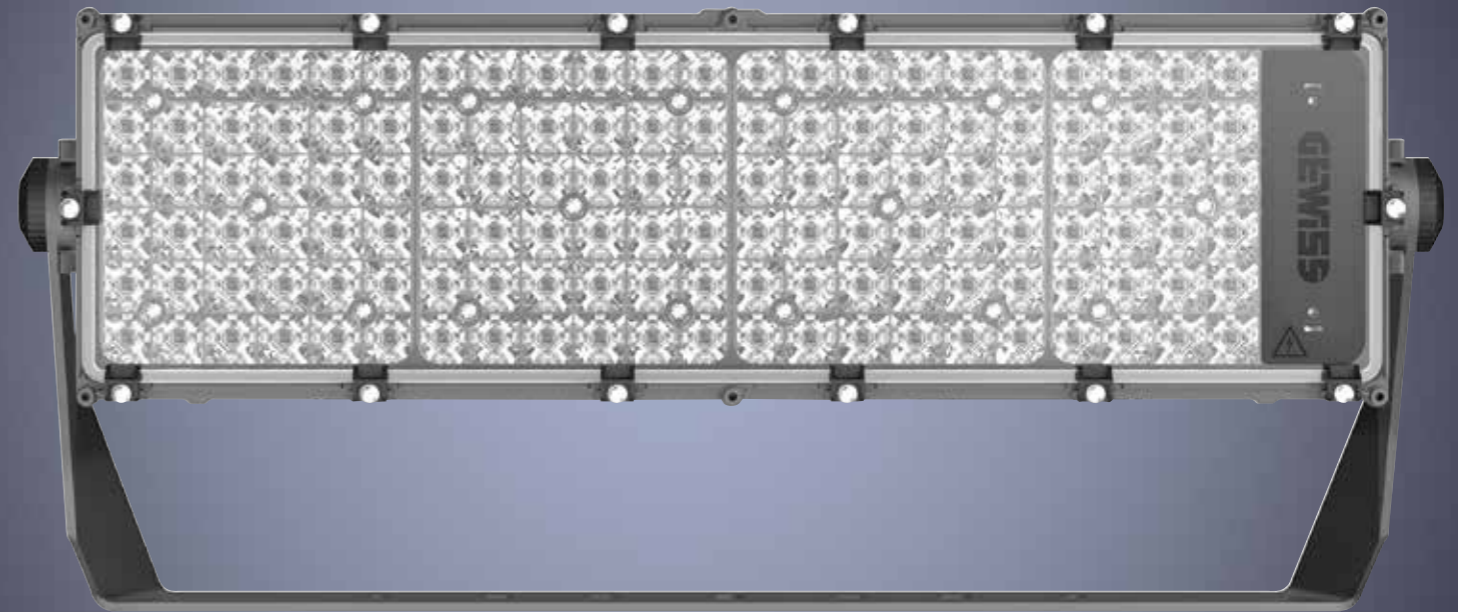
Elliptical 20°x80°

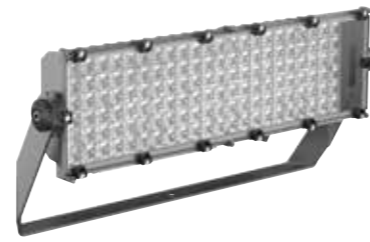


Asymmetrical 45°

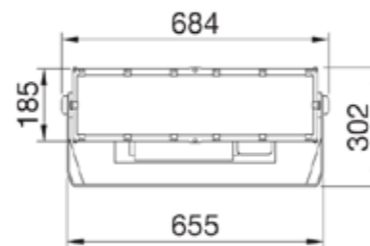


Asymmetrical 60°





SIZE



GENERAL INFORMATION

Application	Indoor/Outdoor
Colour	Graphite Grey
Source	LED - no replaceable
Power consumption	480W
Lifetime	L90B10(Tq25°C)=40.000h L80B10(Tq25°C)=75.000h
Weight	15 Kg
Warranty	5 years
Operating temperature	-25°C ÷ +50°C

OPTIC AND LIGHTING FEATURES

Optics	6 Circular - 2 Asymmetrical - 1 Elliptical
Luminous flux	Up to 62Klm
Luminous efficiency	Up to 130 lm/W
Colour temperature	4000K - 5700K
Colour rendering index	CRI>70 - CRI>80 - CRI90 TLCI>80
Standard deviation colour matching	CRI>70 SDCM = 5 CRI>80 SDCM = 3 CRI 90 SDCM = 3

MATERIALS

Body	Die-cast aluminium
Screen	Front glass panel 4 mm tempered glass / anti-reflective nanocoating
Optical unit	T.I.R.Ex. PMMA HT lenses
External screws	Stainless steel
Colour finish	OUTDOOR Polyester powder coating

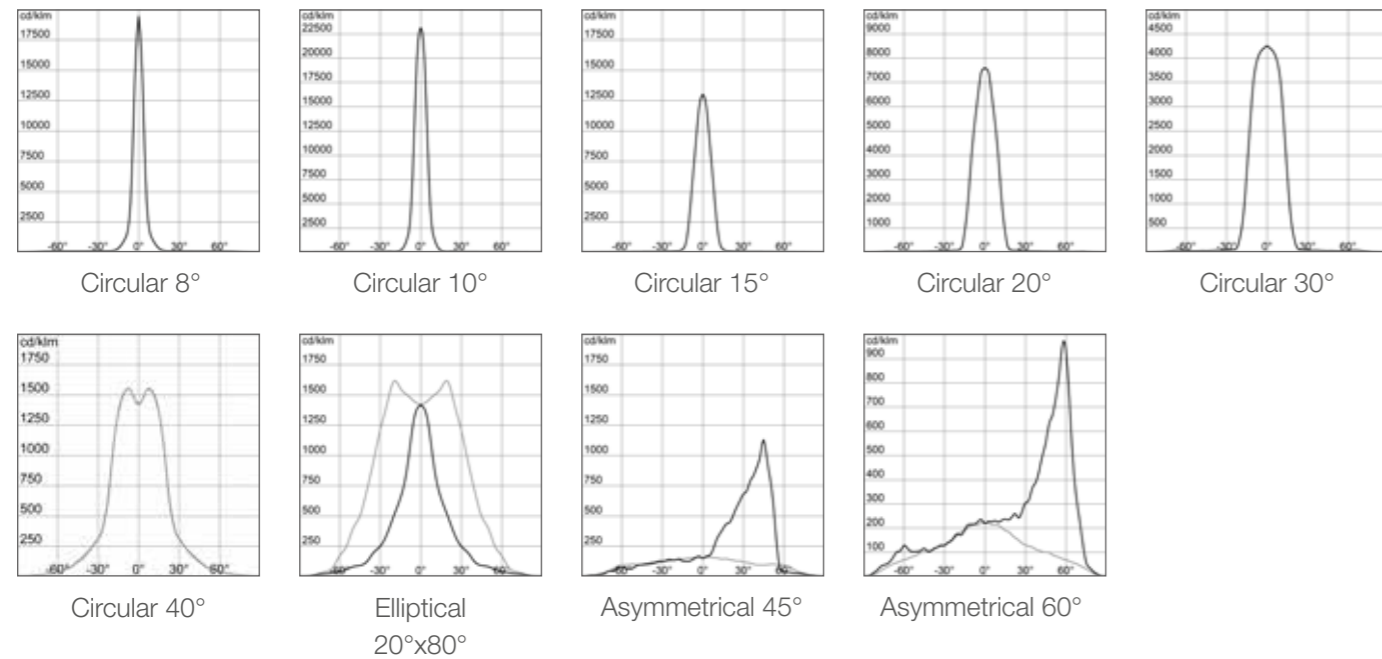
INSTALLATION AND MAINTENANCE

Installation and assembly type	Lighting tower - Wall
Inclination	With adjustable goniometric scale already assembled to the product
Cabling	GW-Connect kit between projector and power supply unit (RM version only)
Driver box	External
Maximum area exposed to wind	0,15 m <sup>2</sup>

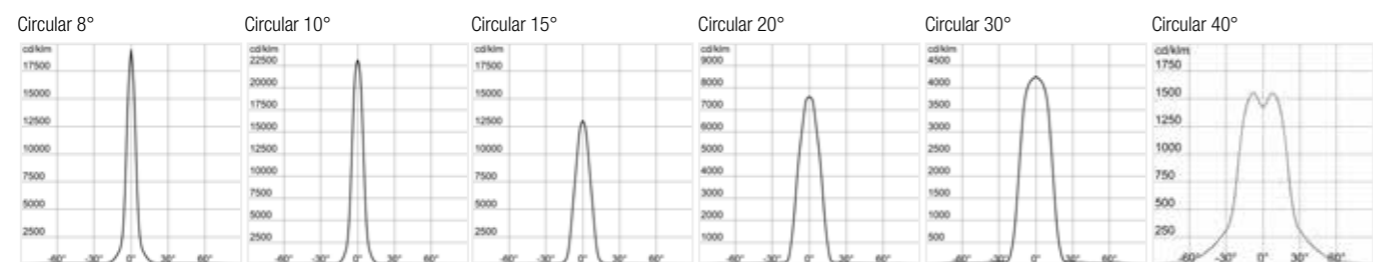
ELECTRICAL FEATURES AND LIGHT MANAGEMENT

Power voltage	220÷240V/400V
Rated frequency	50/60Hz
Power supply	Integrated or external (RM version)
Protection device	DM 10KV / CM 10KV - DM 6KV / CM 10KV
Control system	DALI2 - DALI - DMX - 0-10V
Insulation class	Class I

PHOTOMETRY



## Stadium PRO | 1 - Circular Optic

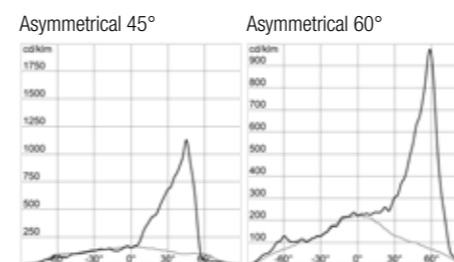


CLASS I

Code	Optics	Colour Rend. Index (CRI)	Colour temp. (CCT)
GWP3131DN740	Circular 8°	CRI>70	4.000K
GWP3131DN757	Circular 8°	CRI>70	5.700K
GWP3131DN840	Circular 8°	CRI>80	4.000K
GWP3131DN857	Circular 8°	CRI>80	5.700K
GWP3131DN957	Circular 8°	CRI>90 TLCl>80	5.700K
GWP3131DM740	Circular 10°	CRI>70	4.000K
GWP3131DM757	Circular 10°	CRI>70	5.700K
GWP3131DM840	Circular 10°	CRI>80	4.000K
GWP3131DM857	Circular 10°	CRI>80	5.700K
GWP3131DM957	Circular 10°	CRI>90 TLCl>80	5.700K
GWP3131DL740	Circular 15°	CRI>70	4.000K
GWP3131DL757	Circular 15°	CRI>70	5.700K
GWP3131DL840	Circular 15°	CRI>80	4.000K
GWP3131DL857	Circular 15°	CRI>80	5.700K
GWP3131DL957	Circular 15°	CRI>90 TLCl>80	5.700K

Code	Optics	Colour Rend. Index (CRI)	Colour temp. (CCT)
GWP3131DH740	Circular 20°	CRI>70	4.000K
GWP3131DH757	Circular 20°	CRI>70	5.700K
GWP3131DH840	Circular 20°	CRI>80	4.000K
GWP3131DH857	Circular 20°	CRI>80	5.700K
GWP3131DH957	Circular 20°	CRI>90 TLCl>80	5.700K
GWP3131DG740	Circular 30°	CRI>70	4.000K
GWP3131DG757	Circular 30°	CRI>70	5.700K
GWP3131DG840	Circular 30°	CRI>80	4.000K
GWP3131DG857	Circular 30°	CRI>80	5.700K
GWP3131DG957	Circular 30°	CRI>90 TLCl>80	5.700K
GWP3131DF740	Circular 40°	CRI>70	4.000K
GWP3131DF757	Circular 40°	CRI>70	5.700K
GWP3131DF840	Circular 40°	CRI>80	4.000K
GWP3131DF857	Circular 40°	CRI>80	5.700K
GWP3131DF957	Circular 40°	CRI>90 TLCl>80	5.700K

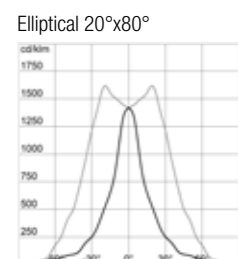
## Stadium PRO | 1 - Asymmetrical Optic



CLASS I

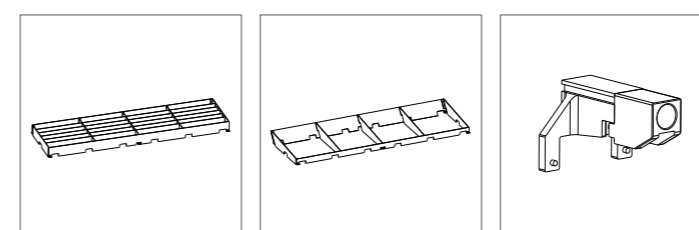
Code	Optics	Colour Rend. Index (CRI)	Colour temp. (CCT)
GWP3131DB740	Asymmetrical 45°	CRI>70	4.000K
GWP3131DB757	Asymmetrical 45°	CRI>70	5.700K
GWP3131DB840	Asymmetrical 45°	CRI>80	4.000K
GWP3131DB857	Asymmetrical 45°	CRI>80	5.700K
GWP3131DB957	Asymmetrical 45°	CRI>90 TLCl>80	5.700K
GWP3131DC740	Asymmetrical 60°	CRI>70	4.000K
GWP3131DC757	Asymmetrical 60°	CRI>70	5.700K
GWP3131DC840	Asymmetrical 60°	CRI>80	4.000K
GWP3131DC857	Asymmetrical 60°	CRI>80	5.700K
GWP3131DC957	Asymmetrical 60°	CRI>90 TLCl>80	5.700K

## Stadium PRO | 1 - Elliptical Optic



CLASS I

Code	Optics	Colour Rend. Index (CRI)	Colour temp. (CCT)
GWP3131DA740	Elliptical 20°x80°	CRI>70	4.000K
GWP3131DA757	Elliptical 20°x80°	CRI>70	5.700K
GWP3131DA840	Elliptical 20°x80°	CRI>80	4.000K
GWP3131DA857	Elliptical 20°x80°	CRI>80	5.700K
GWP3131DA957	Elliptical 20°x80°	CRI>90 TLCl>80	5.700K



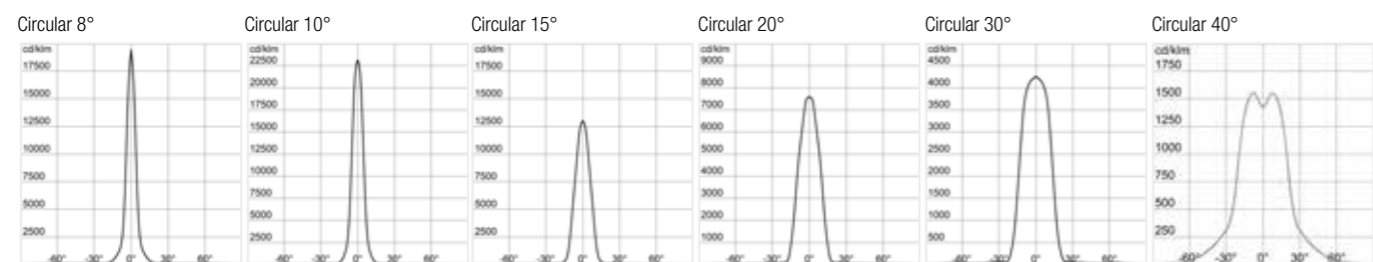
LOUVRE

VISOR

SUPPORT

Code	Description
GWP30002	LOUVRE
GWP30003	VISOR
GWP30004	RED DOT SUPPORT
GWP30006	CIRCULAR-ELLIPTICAL GLASS REPLACEMENT KIT
GWP30009	ASYMMETRICAL GLASS REPLACEMENT KIT

## Stadium PRO | 1 - Circular Optic



CLASS I

Code	Optics	Colour Rend. Index (CRI)	Colour temp. (CCT)
GWP3131BN740	Circular 8°	CRI>70	4.000K
GWP3131BN757	Circular 8°	CRI>70	5.700K
GWP3131BN840	Circular 8°	CRI>80	4.000K
GWP3131BN857	Circular 8°	CRI>80	5.700K
GWP3131BN957	Circular 8°	CRI>90 TLCl>80	5.700K

Code	Optics	Colour Rend. Index (CRI)	Colour temp. (CCT)
GWP3131BM740	Circular 10°	CRI>70	4.000K
GWP3131BM757	Circular 10°	CRI>70	5.700K
GWP3131BM840	Circular 10°	CRI>80	4.000K
GWP3131BM857	Circular 10°	CRI>80	5.700K
GWP3131BM957	Circular 10°	CRI>90 TLCl>80	5.700K

Code	Optics	Colour Rend. Index (CRI)	Colour temp. (CCT)
GWP3131BL740	Circular 15°	CRI>70	4.000K
GWP3131BL757	Circular 15°	CRI>70	5.700K
GWP3131BL840	Circular 15°	CRI>80	4.000K
GWP3131BL857	Circular 15°	CRI>80	5.700K
GWP3131BL957	Circular 15°	CRI>90 TLCl>80	5.700K

Code	Optics	Colour Rend. Index (CRI)	Colour temp. (CCT)
GWP3131BH740	Circular 20°	CRI>70	4.000K
GWP3131BH757	Circular 20°	CRI>70	5.700K
GWP3131BH840	Circular 20°	CRI>80	4.000K
GWP3131BH857	Circular 20°	CRI>80	5.700K
GWP3131BH957	Circular 20°	CRI>90 TLCl>80	5.700K

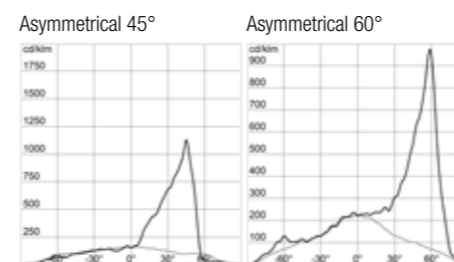
  

Code	Optics	Colour Rend. Index (CRI)	Colour temp. (CCT)
GWP3131BG740	Circular 30°	CRI>70	4.000K
GWP3131BG757	Circular 30°	CRI>70	5.700K
GWP3131BG840	Circular 30°	CRI>80	4.000K
GWP3131BG857	Circular 30°	CRI>80	5.700K
GWP3131BG957	Circular 30°	CRI>90 TLCl>80	5.700K

Code	Optics	Colour Rend. Index (CRI)	Colour temp. (CCT)
GWP3131BF740	Circular 40°	CRI>70	4.000K
GWP3131BF757	Circular 40°	CRI>70	5.700K
GWP3131BF840	Circular 40°	CRI>80	4.000K
GWP3131BF857	Circular 40°	CRI>80	5.700K
GWP3131BF957	Circular 40°	CRI>90 TLCl>80	5.700K

## Stadium PRO | 1 - Asymmetrical Optic



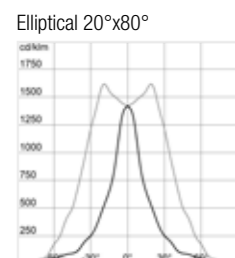
CLASS I

Code	Optics	Colour Rend. Index (CRI)	Colour temp. (CCT)
GWP3131BB740	Asymmetrical 45°	CRI>70	4.000K
GWP3131BB757	Asymmetrical 45°	CRI>70	5.700K
GWP3131BB840	Asymmetrical 45°	CRI>80	4.000K
GWP3131BB857	Asymmetrical 45°	CRI>80	5.700K
GWP3131BB957	Asymmetrical 45°	CRI>90 TLCl>80	5.700K

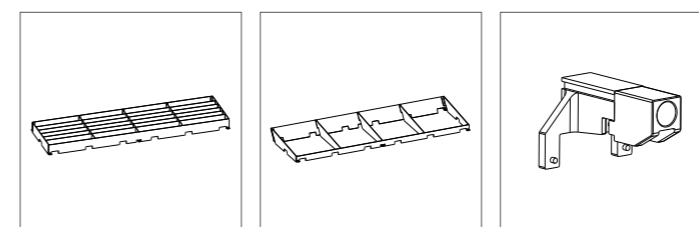
Code	Optics	Colour Rend. Index (CRI)	Colour temp. (CCT)
GWP3131BC740	Asymmetrical 60°	CRI>70	4.000K
GWP3131BC757	Asymmetrical 60°	CRI>70	5.700K
GWP3131BC840	Asymmetrical 60°	CRI>80	4.000K
GWP3131BC857	Asymmetrical 60°	CRI>80	5.700K
GWP3131BC957	Asymmetrical 60°	CRI>90 TLCl>80	5.700K

## Stadium PRO | 1 - Elliptical Optic



CLASS I

Code	Optics	Colour Rend. Index (CRI)	Colour temp. (CCT)
GWP3131BA740	Elliptical 20°x80°	CRI>70	4.000K
GWP3131BA757	Elliptical 20°x80°	CRI>70	5.700K
GWP3131BA840	Elliptical 20°x80°	CRI>80	4.000K
GWP3131BA857	Elliptical 20°x80°	CRI>80	5.700K
GWP3131BA957	Elliptical 20°x80°	CRI>90 TLCl>80	5.700K



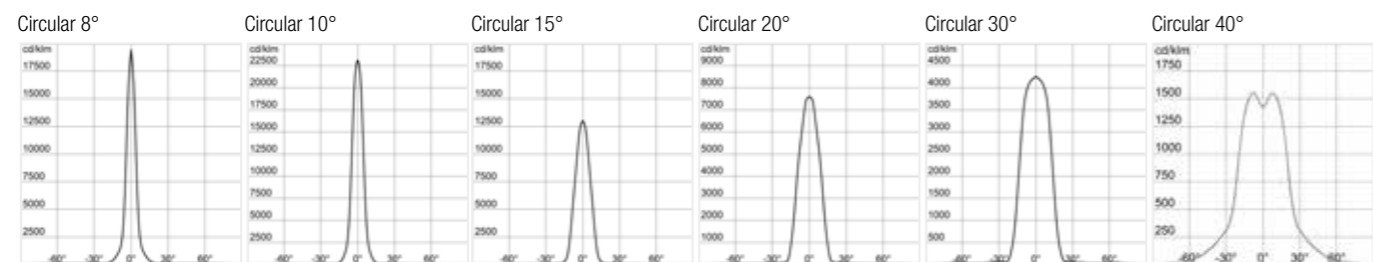
LOUVRE

VISOR

SUPPORT

Code	Description
GWP30002	LOUVRE
GWP30003	VISOR
GWP30004	RED DOT SUPPORT
GWP30006	CIRCULAR-ELLIPTICAL GLASS REPLACEMENT KIT
GWP30009	ASYMMETRICAL GLASS REPLACEMENT KIT

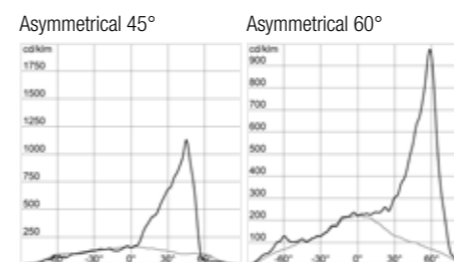
## Stadium PRO | 1 - Circular Optic



CLASS I

Code	Optics	Colour Rend. Index (CRI)	Colour temp. (CCT)
GWP3131FN740	Circular 8°	CRI>70	4.000K
GWP3131FN757	Circular 8°	CRI>70	5.700K
GWP3131FN840	Circular 8°	CRI>80	4.000K
GWP3131FN857	Circular 8°	CRI>80	5.700K
GWP3131FN957	Circular 8°	CRI>90 TLCl>80	5.700K
GWP3131FM740	Circular 10°	CRI>70	4.000K
GWP3131FM757	Circular 10°	CRI>70	5.700K
GWP3131FM840	Circular 10°	CRI>80	4.000K
GWP3131FM857	Circular 10°	CRI>80	5.700K
GWP3131FM957	Circular 10°	CRI>90 TLCl>80	5.700K
GWP3131FL740	Circular 15°	CRI>70	4.000K
GWP3131FL757	Circular 15°	CRI>70	5.700K
GWP3131FL840	Circular 15°	CRI>80	4.000K
GWP3131FL857	Circular 15°	CRI>80	5.700K
GWP3131FL957	Circular 15°	CRI>90 TLCl>80	5.700K
GWP3131FH740	Circular 20°	CRI>70	4.000K
GWP3131FH757	Circular 20°	CRI>70	5.700K
GWP3131FH840	Circular 20°	CRI>80	4.000K
GWP3131FH857	Circular 20°	CRI>80	5.700K
GWP3131FH957	Circular 20°	CRI>90 TLCl>80	5.700K
GWP3131FG740	Circular 30°	CRI>70	4.000K
GWP3131FG757	Circular 30°	CRI>70	5.700K
GWP3131FG840	Circular 30°	CRI>80	4.000K
GWP3131FG857	Circular 30°	CRI>80	5.700K
GWP3131FG957	Circular 30°	CRI>90 TLCl>80	5.700K
GWP3131FF740	Circular 40°	CRI>70	4.000K
GWP3131FF757	Circular 40°	CRI>70	5.700K
GWP3131FF840	Circular 40°	CRI>80	4.000K
GWP3131FF857	Circular 40°	CRI>80	5.700K
GWP3131FF957	Circular 40°	CRI>90 TLCl>80	5.700K

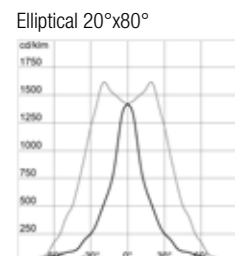
## Stadium PRO | 1 - Asymmetrical Optic



CLASS I

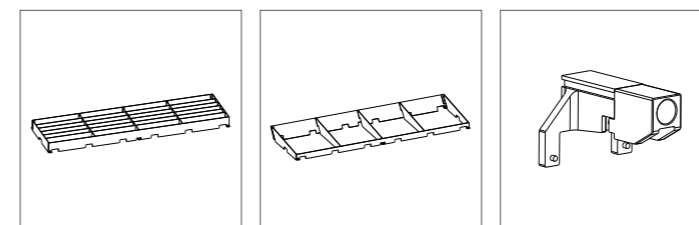
Code	Optics	Colour Rend. Index (CRI)	Colour temp. (CCT)
GWP3131FB740	Asymmetrical 45°	CRI>70	4.000K
GWP3131FB757	Asymmetrical 45°	CRI>70	5.700K
GWP3131FB840	Asymmetrical 45°	CRI>80	4.000K
GWP3131FB857	Asymmetrical 45°	CRI>80	5.700K
GWP3131FB957	Asymmetrical 45°	CRI>90 TLCl>80	5.700K
GWP3131FC740	Asymmetrical 60°	CRI>70	4.000K
GWP3131FC757	Asymmetrical 60°	CRI>70	5.700K
GWP3131FC840	Asymmetrical 60°	CRI>80	4.000K
GWP3131FC857	Asymmetrical 60°	CRI>80	5.700K
GWP3131FC957	Asymmetrical 60°	CRI>90 TLCl>80	5.700K

## Stadium PRO | 1 - Elliptical Optic



CLASS I

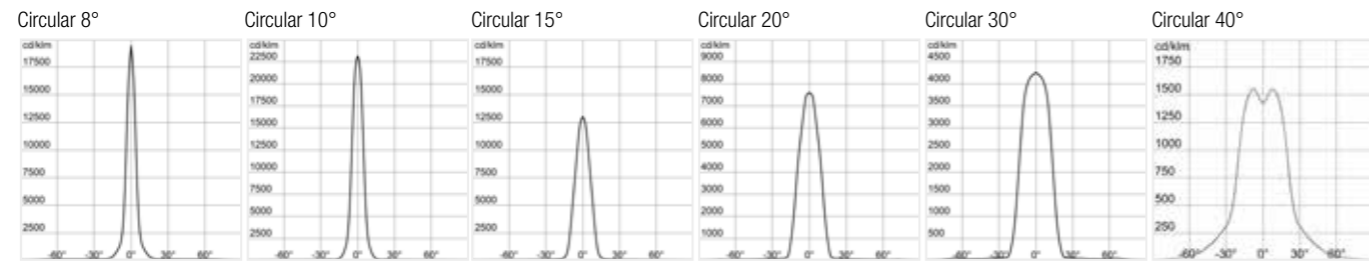
Code	Optics	Colour Rend. Index (CRI)	Colour temp. (CCT)
GWP3131FA740	Elliptical 20°x80°	CRI>70	4.000K
GWP3131FA757	Elliptical 20°x80°	CRI>70	5.700K
GWP3131FA840	Elliptical 20°x80°	CRI>80	4.000K
GWP3131FA857	Elliptical 20°x80°	CRI>80	5.700K
GWP3131FA957	Elliptical 20°x80°	CRI>90 TLCl>80	5.700K



LOUVRE VISOR SUPPORT

Code	Description
GWP30002	LOUVRE
GWP30003	VISOR
GWP30004	RED DOT SUPPORT
GWP30006	CIRCULAR-ELLIPTICAL GLASS REPLACEMENT KIT
GWP30009	ASYMMETRICAL GLASS REPLACEMENT KIT

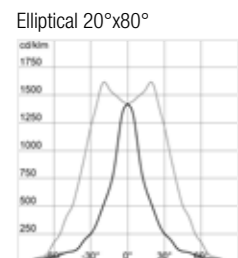
## Stadium PRO | 1 - Circular Optic



CLASS I

Code	Optics	Colour Rend. Index (CRI)	Colour temp. (CCT)
GWP3131AN740	Circular 8°	CRI>70	4.000K
GWP3131AN757	Circular 8°	CRI>70	5.700K
GWP3131AN840	Circular 8°	CRI>80	4.000K
GWP3131AN857	Circular 8°	CRI>80	5.700K
GWP3131AN957	Circular 8°	CRI>90 TLCl>80	5.700K
GWP3131AM740	Circular 10°	CRI>70	4.000K
GWP3131AM757	Circular 10°	CRI>70	5.700K
GWP3131AM840	Circular 10°	CRI>80	4.000K
GWP3131AM857	Circular 10°	CRI>80	5.700K
GWP3131FM957	Circular 10°	CRI>90 TLCl>80	5.700K
GWP3131AL740	Circular 15°	CRI>70	4.000K
GWP3131AL757	Circular 15°	CRI>70	5.700K
GWP3131AL840	Circular 15°	CRI>80	4.000K
GWP3131AL857	Circular 15°	CRI>80	5.700K
GWP3131AL957	Circular 15°	CRI>90 TLCl>80	5.700K
GWP3131AH740	Circular 20°	CRI>70	4.000K
GWP3131AH757	Circular 20°	CRI>70	5.700K
GWP3131AH840	Circular 20°	CRI>80	4.000K
GWP3131AH857	Circular 20°	CRI>80	5.700K
GWP3131AH957	Circular 20°	CRI>90 TLCl>80	5.700K
GWP3131AG740	Circular 30°	CRI>70	4.000K
GWP3131AG757	Circular 30°	CRI>70	5.700K
GWP3131AG840	Circular 30°	CRI>80	4.000K
GWP3131AG857	Circular 30°	CRI>80	5.700K
GWP3131AG957	Circular 30°	CRI>90 TLCl>80	5.700K
GWP3131AA740	Circular 40°	CRI>70	4.000K
GWP3131AA757	Circular 40°	CRI>70	5.700K
GWP3131AA840	Circular 40°	CRI>80	4.000K
GWP3131AA857	Circular 40°	CRI>80	5.700K
GWP3131AA957	Circular 40°	CRI>90 TLCl>80	5.700K

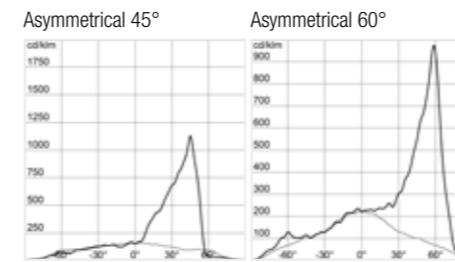
## Stadium PRO | 1 - Elliptical Optic



CLASS I

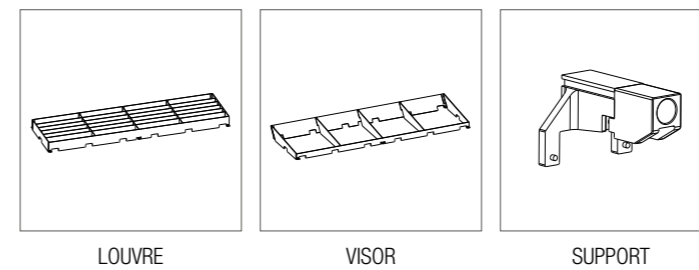
Code	Optics	Colour Rend. Index (CRI)	Colour temp. (CCT)
GWP3131AA740	Elliptical 20°x80°	CRI>70	4.000K
GWP3131AA757	Elliptical 20°x80°	CRI>70	5.700K
GWP3131AA840	Elliptical 20°x80°	CRI>80	4.000K
GWP3131AA857	Elliptical 20°x80°	CRI>80	5.700K
GWP3131AA957	Elliptical 20°x80°	CRI>90 TLCl>80	5.700K

## Stadium PRO | 1 - Asymmetrical Optic



CLASS I

Code	Optics	Colour Rend. Index (CRI)	Colour temp. (CCT)
GWP3131AB740	Asymmetrical 45°	CRI>70	4.000K
GWP3131AB757	Asymmetrical 45°	CRI>70	5.700K
GWP3131AB840	Asymmetrical 45°	CRI>80	4.000K
GWP3131AB857	Asymmetrical 45°	CRI>80	5.700K
GWP3131AB957	Asymmetrical 45°	CRI>90 TLCl>80	5.700K
GWP3131AC740	Asymmetrical 60°	CRI>70	4.000K
GWP3131AC757	Asymmetrical 60°	CRI>70	5.700K
GWP3131AC840	Asymmetrical 60°	CRI>80	4.000K
GWP3131AC857	Asymmetrical 60°	CRI>80	5.700K
GWP3131AC957	Asymmetrical 60°	CRI>90 TLCl>80	5.700K



Code	Description
GWP30002	LOUVRE
GWP30003	VISOR
GWP30004	RED DOT SUPPORT
GWP30006	CIRCULAR-ELLIPTICAL GLASS REPLACEMENT KIT
GWP30009	ASYMMETRICAL GLASS REPLACEMENT KIT
GWP30015	DALI SINGLE DRIVER
GWP30017	0-10V SINGLE DRIVER
GWP30040	STADIUM 1M DALI2 DRIVER
GWP30041	STADIUM 1M DMX DRIVER



## SOFTWARE



**BIM**  
LIBRARY

BIM is online software that can be used on any internet-connected device (smartphone, tablet, or PC) with which you can download BIM models of GEWISS products.



**RELUX**  
PLUGIN

Plugin for professional lighting design with GEWISS products, for use with Relux® software.



**DIALUX**  
PLUGIN

Plugin for professional lighting design with GEWISS products, for use with Dialux® software.



**REVIT**  
PLUGIN

Plugin for the realisation of BIM projects with GEWISS products, for use with Revit® software.

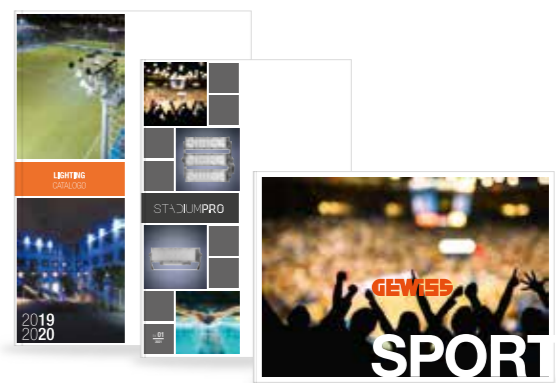
# GEWISS AT YOUR SERVICE

## WWW.GEWISS.COM



Our website is constantly evolving to ensure you always have up-to-date information and useful work tools, which can be downloaded or consulted online at any time. In this section, you can also build your own custom catalogue and save your favourite products and services, so you can save time when viewing them, or simply keep them as an archive for your projects.

## DOCUMENTATION



GEWISS develops different types of documentation for each product and solution range, from technical data sheets and specifications, to flyers, family or service brochures, to Solution catalogues dedicated to the various application segments, with insights into integrated solutions and IoT. Request the documentation you need from your trusted business reference or visit [gewiss.com](http://gewiss.com)

## DESIGN TEAM

Supporting you in the design of your electrical or lighting system, GEWISS provides specialist designers who can clarify your concerns or collaborate with you in drafting your design, ensuring quality and professionalism.



**GEWISS S.p.A.**

Registered Office: Via Domenico Bosatelli, 1  
24069 Cenate Sotto (BG), Italy

**T** +39 035 946 111

**E** [gewiss@gewiss.com](mailto:gewiss@gewiss.com)

[www.gewiss.com](http://www.gewiss.com)

Single shareholder company - Bergamo Business Register/VAT/Tax Code (IT) 00385040167  
Economic and Administrative Index 107496 - Share Capital EUR 60,000,000.00 fully paid up

Visit [www.gewiss.com](http://www.gewiss.com)  
and follow us on

