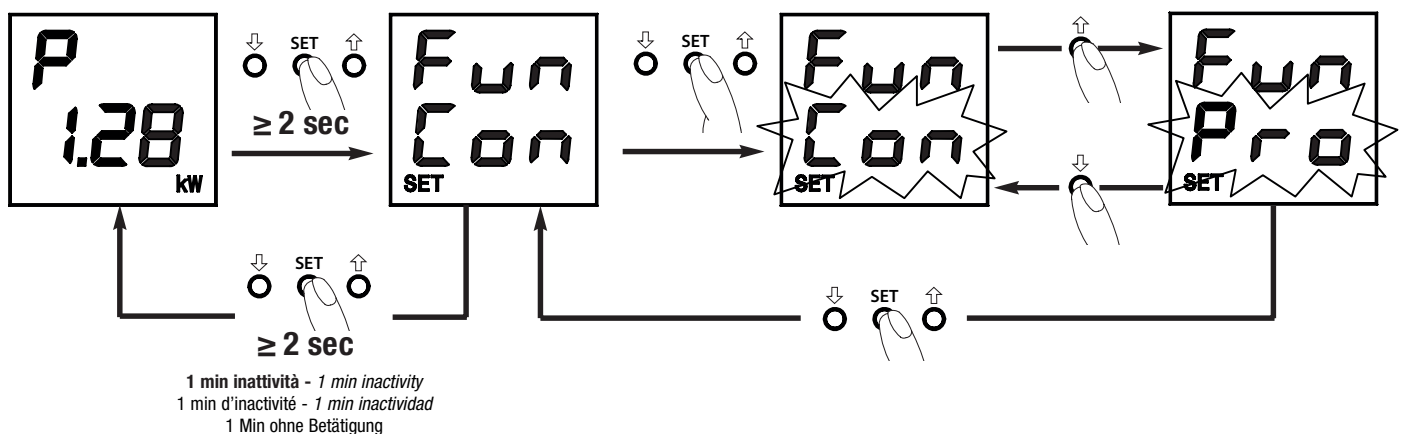


CONFIGURAZIONE FUNZIONAMENTO COME CONTROLLO CONSUMI (FUN CON) O GESTIONE PRODUZIONE FOTOVOLTAICA (FUN PRO)
FUNCTION CONFIGURATION AS CONSUMPTION CONTROL (FUN CON) OR PHOTOVOLTAIC PRODUCTION MANAGEMENT (FUN PRO)
CONFIGURATION DU FONCTIONNEMENT COMME CONTRÔLE DES CONSOMMATIONS (FUN CON) OU COMME GESTION DE LA PRODUCTION PHOTOVOLTAÏQUE (FUN PRO)

CONFIGURACIÓN DEL FUNCIONAMIENTO COMO CONTROL DE CONSUMO (FUN CON) O GESTIÓN DE PRODUCCIÓN FOTOVOLTAICA (FUN PRO)
KONFIGURATION DER BETRIEBSART ALS VERBRAUCHSKONTROLLE (FUN CON) ODER VERWALTUNG DER PHOTOVOLTAIK-PRODUKTION (FUN PRO)



Fun Con (default) = il dispositivo funzionerà come relè di controllo carico per gestione consumi => Pag. 2

Fun Con (default) = the device will work as a load control relay for consumption management => Page 2

Fun Con (par défaut) = le dispositif fonctionne comme relais de contrôle de la charge pour la gestion des consommations => Page 2

Fun Con (predefinido) = el dispositivo funcionará como un relé de control de carga para la gestión del consumo => Pág. 2

Fun Con (Standard) = die Vorrichtung funktioniert als Relais zur Lastkontrolle für das Verbrauchsmanagement => S. 2



Fun Pro = il dispositivo funzionerà come relè di attivazione carico in funzione del surplus di potenza prodotta da impianto fotovoltaico => Pag. 5

Fun Pro = the device will work as a load activation relay based on the power surplus produced by the photovoltaic system => Page 5

Fun Pro = le dispositif fonctionne comme relais d'activation de la charge en fonction du surplus de puissance produite par une installation photovoltaïque => Page 5

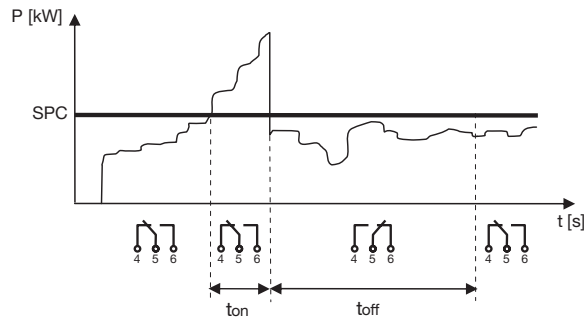
Fun Pro = el dispositivo funcionará como un relé de activación de carga dependiendo del excedente de potencia producida por el sistema fotovoltaico => Pág. 5

Fun Pro = die Vorrichtung funktioniert als Relais zur Lastaktivierung in Abhängigkeit des Leistungsüberschusses, der von der Photovoltaikanlage erzeugt wurde => S. 5



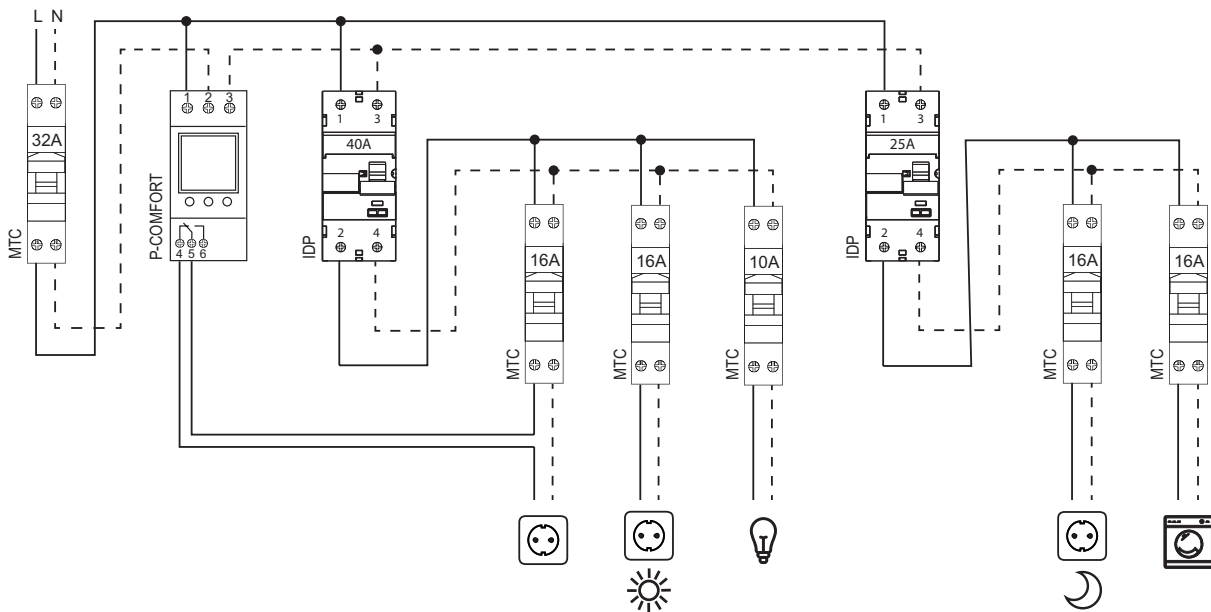
FUN CON

FUNZIONAMENTO CONTROLLO CARICO PER GESTIONE CONSUMI - LOAD CONTROL FUNCTION FOR CONSUMPTION MANAGEMENT - FONCTIONNEMENT DU CONTRÔLE DE LA CHARGE POUR LA GESTION DES CONSOMMATIONS - FUNCIONAMIENTO CONTROL DE CARGA PARA GESTIÓN DE CONSUMO - BETRIEBSART LASTKONTROLLE FÜR VERBRAUCHSMANAGEMENT

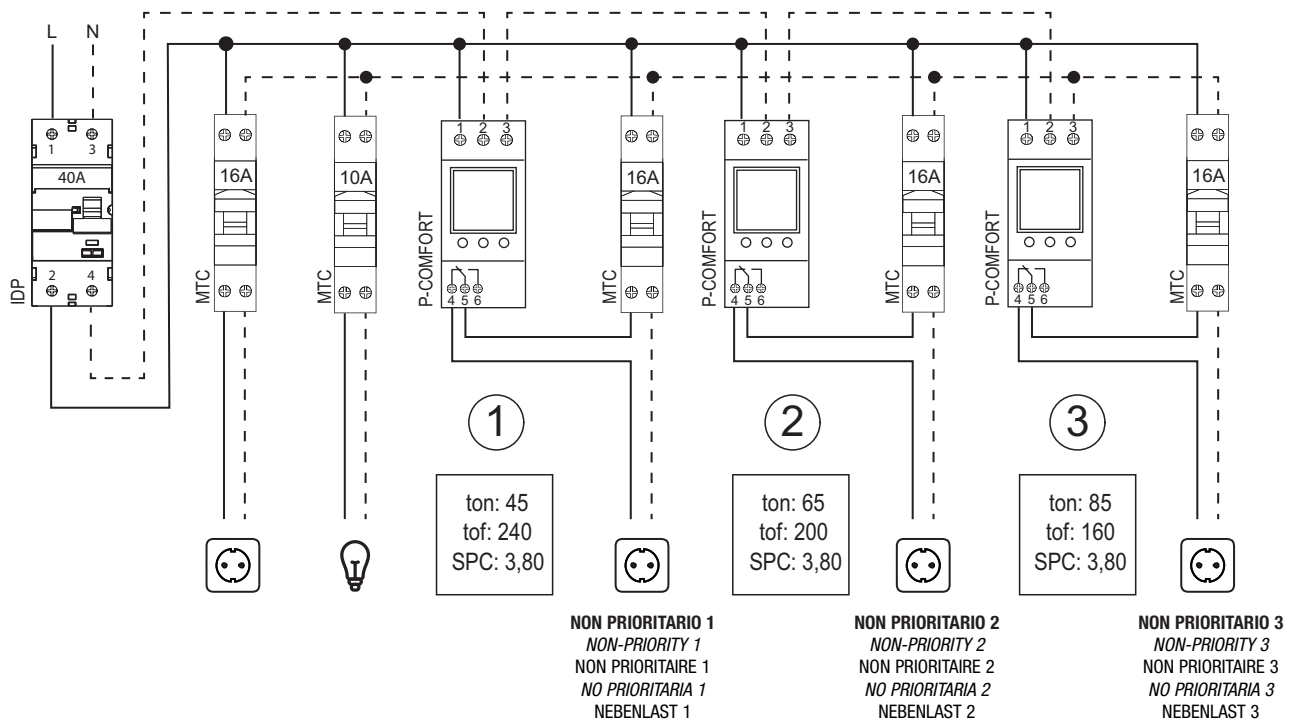


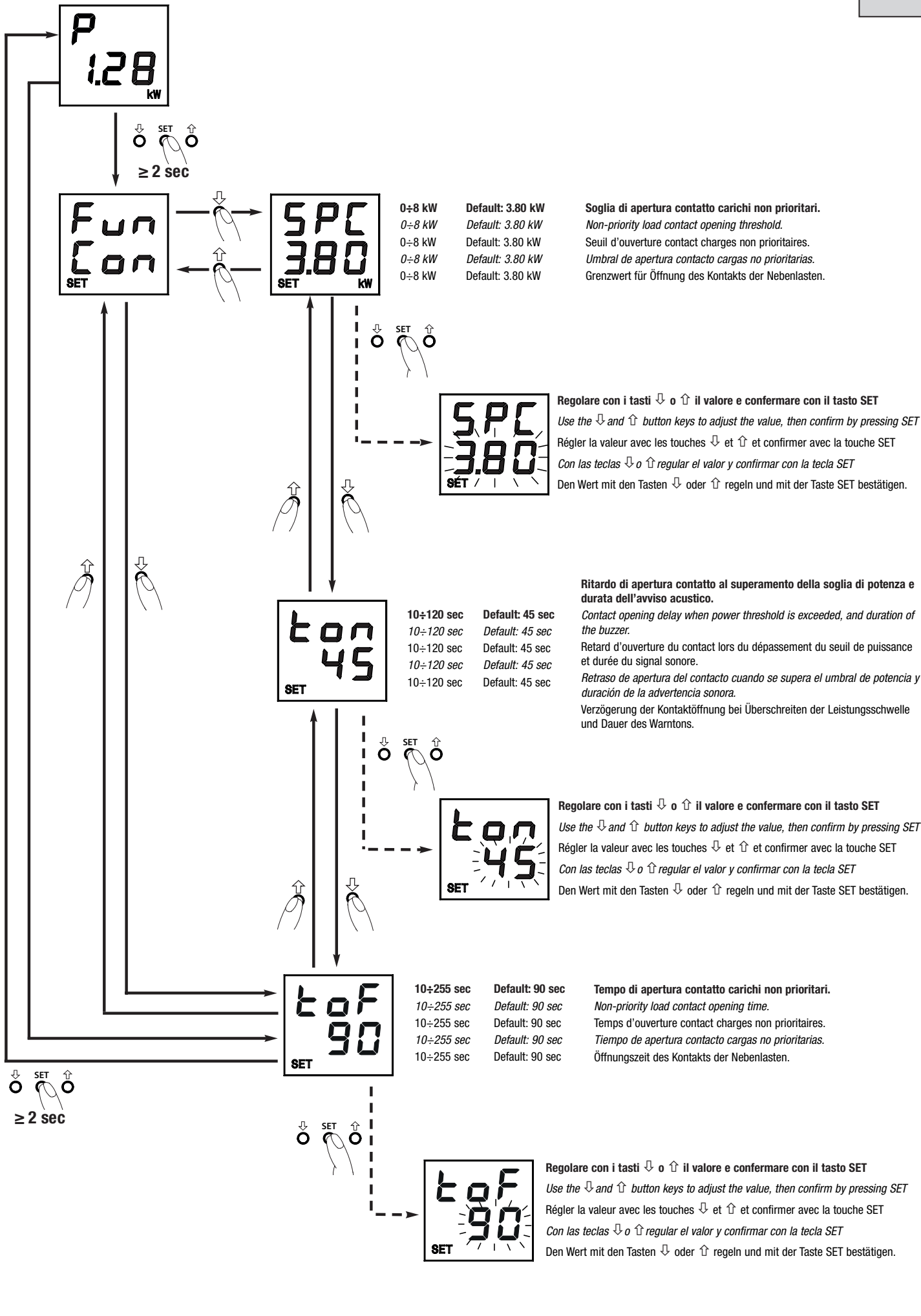
SCHEMI FUNZIONALI - FUNCTIONAL DIAGRAMS - SCHÉMAS FONCTIONNELS - ESQUEMAS FUNCIONALES - FUNKTIONSPLÄNE

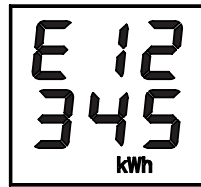
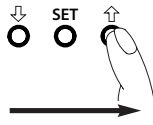
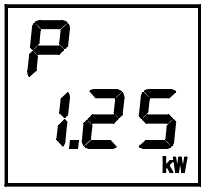
Esempio di installazione nel centralino domestico - Example of installation in the domestic enclosure - Exemple d'installation dans la centrale domestique - Ejemplo de instalación en la centralita doméstica - Installationsbeispiel im wohnungsverteiler



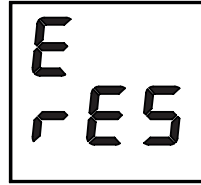
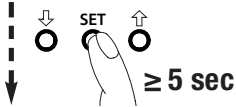
Gestione di più carichi non prioritari (ad esempio 3 carichi non prioritari) - Management of several non-priority loads (e.g. 3 non-priority loads) - Gestion de plusieurs charges non prioritaires (par exemple 3 charges non prioritaires) - Gestión de varias cargas no prioritarias (por ejemplo 3 cargas no prioritarias) - Verwaltung mehrerer nicht prioritärer lasten (zum beispiel 3 nicht prioritäre lasten)



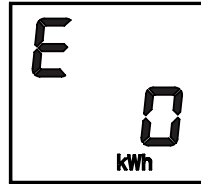
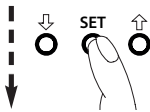




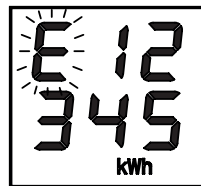
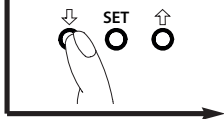
Energia consumata (12.345 kWh) - Max 99.999 kWh
 Energy consumed (12.345 kWh) - Max 99.999 kWh
 Énergie consommée (12 345 kWh) - Max. 99 999 kWh
 Energía consumida (12.345 kWh) - Máx 99.999 kWh
 Verbrauchte Energie (12.345 kWh) - Max. 99.999 kWh



Procedura reset energia consumata
 Energy consumed reset procedure
 Procédure de remise à zéro de l'énergie consommée
 Procedimiento de reset de la energía consumida
 Reset-Vorgang verbrauchte Energie



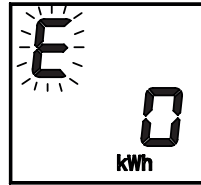
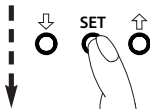
Reset confermato
 Reset confirmed
 Remise à zéro confirmée
 Reset confirmado
 Bestätigtes Reset



Energia erogata (12.345 kWh) - Max 99.999 kWh
 Energy supplied (12.345 kWh) - Max 99.999 kWh
 Énergie fournie (12 345 kWh) - Max. 99 999 kWh
 Energía suministrada (12.345 kWh) - Máx 99.999 kWh
 Abgegebene Energie (12.345 kWh) - Max. 99.999 kWh



Procedura reset energia erogata
 Energy supplied reset procedure
 Procédure de remise à zéro de l'énergie fournie
 Procedimiento de reset de la energía suministrada
 Reset-Vorgang abgegebene Energie

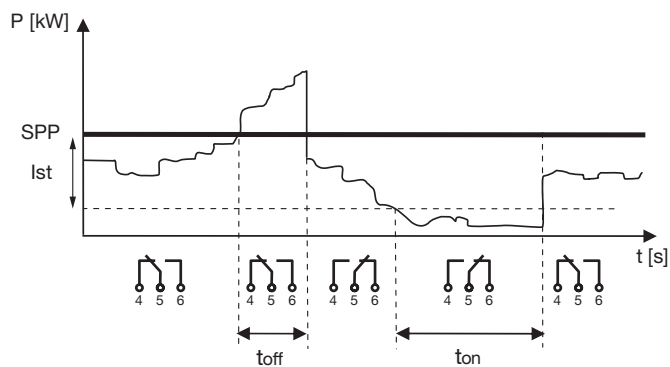


Reset confermato
 Reset confirmed
 Remise à zéro confirmée
 Reset confirmado
 Bestätigtes Reset

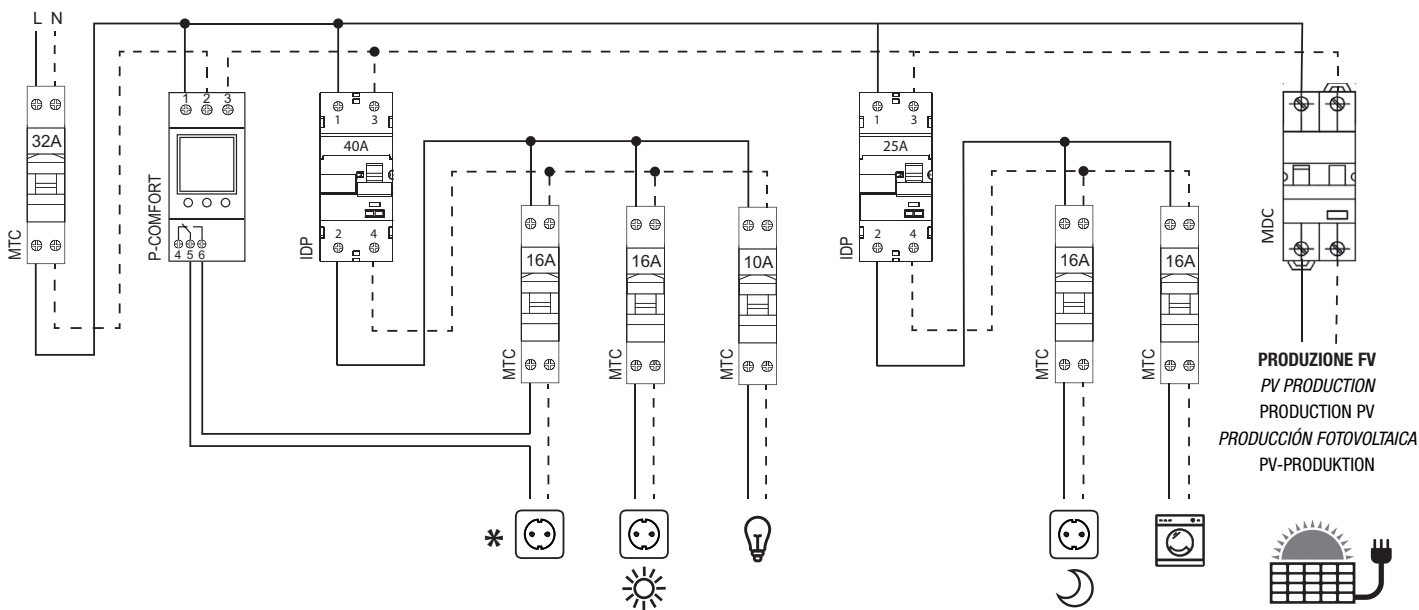
P = Potenza Consumata - Consumed Power - Puissance consommée - Potencia consumida - Verbrauchte Leistung
 P- = Potenza Prodotta - Produced Power - Puissance produite - Potencia producida - Erzeugte Leistung

FUN PRO

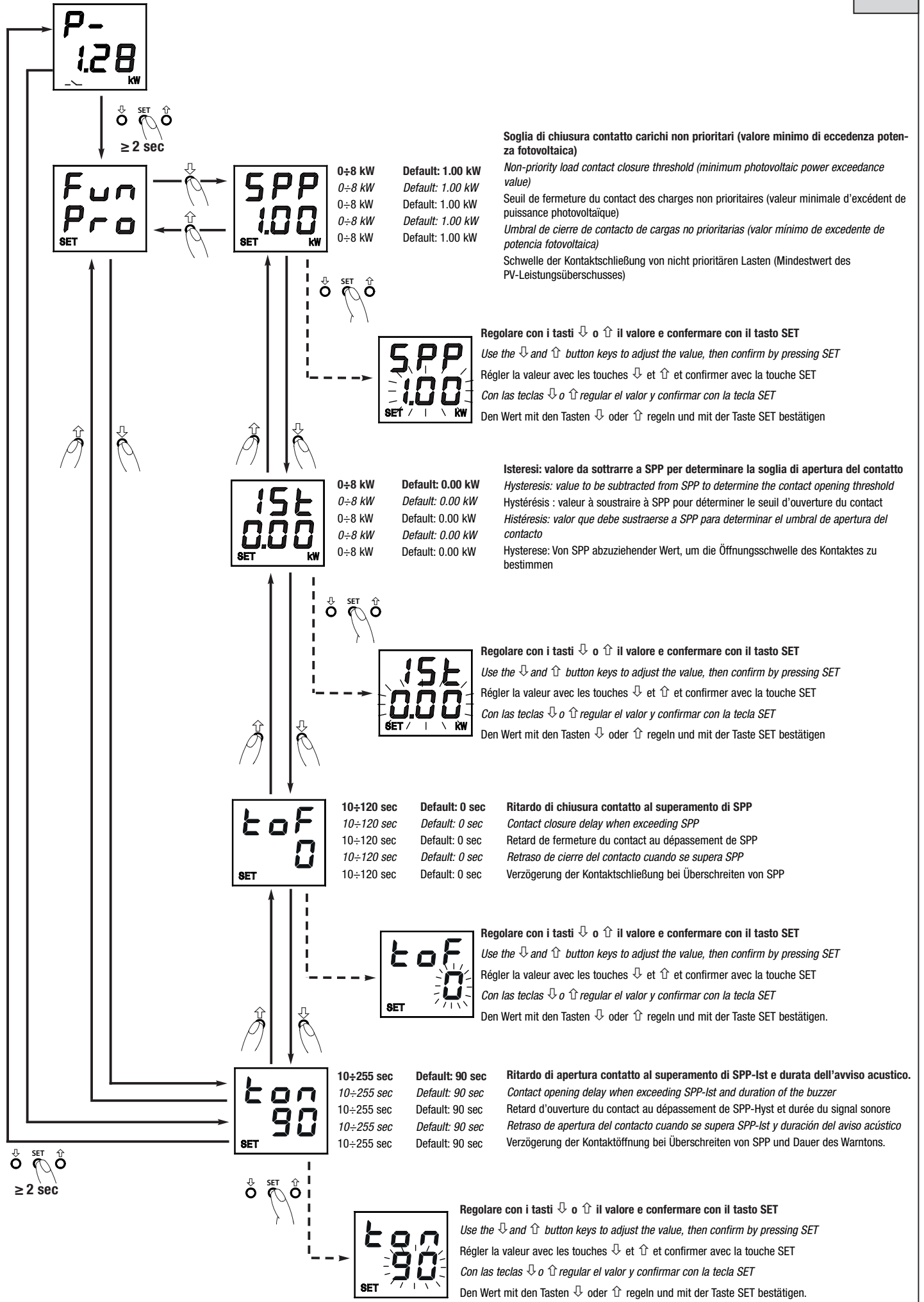
FUNZIONAMENTO CONTROLLO CARICO PER GESTIONE POTENZA FOTOVOLTAICA - LOAD CONTROL FUNCTION FOR PHOTOVOLTAIC POWER MANAGEMENT - FONCTIONNEMENT DU CONTRÔLE DE LA CHARGE POUR LA GESTION DE LA PUISSANCE PHOTOVOLTAÏQUE - FUNCIONAMIENTO CONTROL DE CARGA PARA GESTIÓN POTENCIA FOTOVOLTAICA - BETRIEBSART LASTKONTROLLE FÜR VERWALTUNG PHOTOVOLTAIK-LEISTUNG

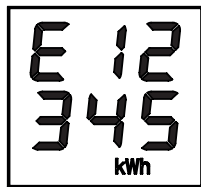
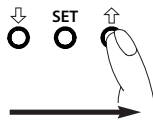
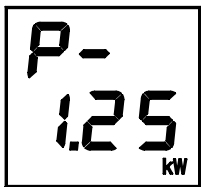


SCHEMA FUNZIONALE CON IMPIANTO FOTOVOLTAICO - FUNCTIONAL DIAGRAM WITH PHOTOVOLTAIC SYSTEM - SCHÉMA FONCTIONNEL AVEC INSTALLATION PHOTOVOLTAÏQUE - ESQUEMA FUNCIONAL CON INSTALACIÓN FOTOVOLTAICA - FUNKTIONSPLAN MIT PHOTOVOLTAIKANLAGE

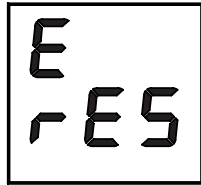
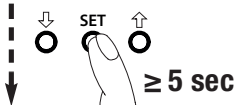


*** CARICO INSERIBILE IN CASO DI SURPLUS DI POTENZA FV**
 CONNECTABLE LOAD IN CASE OF SURPLUS PV POWER
 CHARGE POUVANT ÊTRE ACTIVÉE EN CAS DE SURPLUS DE PUISSANCE PV
 CARGA UTILIZABLE EN CASO DE EXCEDENTE DE POTENCIA FOTOVOLTAICA
 LAST EINFÜGBAR IM FALLE EINES PV-LEISTUNGSÜBERSCHUSSES

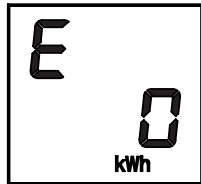
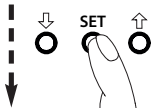




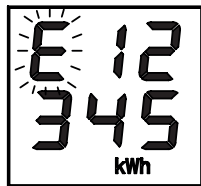
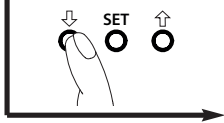
Energia esportata (12.345 kWh) - Max 99.999 kWh
Exported energy (12.345 kWh) - Max 99.999 kWh
Énergie exportée (12.345 kWh) - Max. 99.999 kWh
Energía exportada (12.345 kWh) - Máx 99.999 kWh
Exportierte Energie (12.345 kWh) - Max. 99.999 kWh



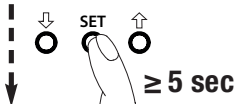
Procedura reset energia esportata
Exported energy reset procedure
Procédure de remise à zéro de l'énergie exportée
Procedimiento reset energía exportada
Reset-Vorgang für exportierte Energie



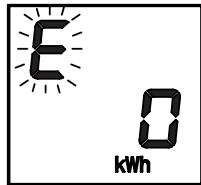
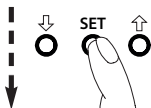
Reset confermato
Reset confirmed
Remise à zéro confirmée
Reset confirmado
Bestätigtes Reset



Energia importata (12.345 kWh) - Max 99.999 kWh
Imported energy (12.345 kWh) - Max 99.999 kWh
Énergie importée (12.345 kWh) - Max. 99.999 kWh
Energía importada (12.345 kWh) - Máx 99.999 kWh
Importierte Energie (12.345 kWh) - Max. 99.999 kWh

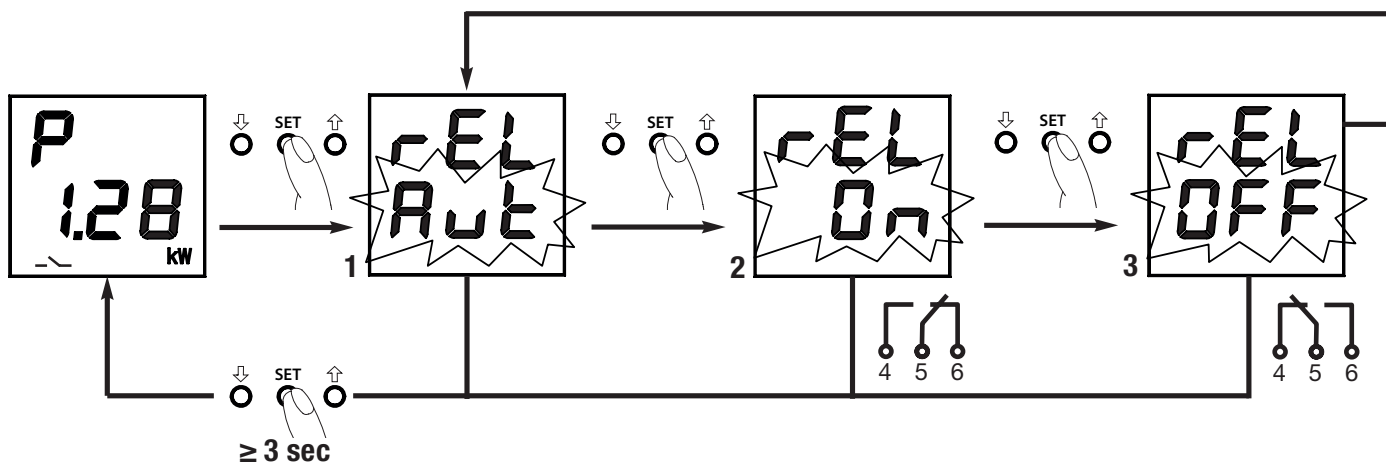


Procedura reset energia importata
Imported energy reset procedure
Procédure de remise à zéro de l'énergie importée
Procedimiento reset energía importada
Reset-Vorgang für importierte Energie



Reset confermato
Reset confirmed
Remise à zéro confirmée
Reset confirmado
Bestätigtes Reset

P- = Potenza Consumata - Consumed Power - Puissance consommée - Potencia consumida - Verbrauchte Leistung
P = Potenza Prodotta - Produced Power - Puissance produite - Potencia producida - Erzeugte Leistung



Funzione disponibile solo per dispositivo configurato in Fun Pro (pag.1)
 Function available only for devices with Fun Pro configuration (page 1)
 Fonction disponible uniquement pour un dispositif configuré en Fun Pro (page 1)
 Función disponible solo para dispositivo configurado en Fun Pro (pág.1)
 Funktion nur verfügbar für in Fun Pro konfigurierte Vorrichtung (S.1)



Norma IEC62962
Tensione nominale: 230 Vac (50Hz)
Uimp: 4kV
Corrente nominale (relé): 16 A
LSE classe B
Potenza nominale di distacco del carico (PnLs) 10÷8000W
Potenza di richiusura del carico (PnLr) 0÷8000W
Tempo minimo per il distacco del carico (T_{smin}): 1s
Tempo di distacco minimo (T_{dmin}): 10÷240s
Grado di protezione: IP20
Caratteristiche SCPD: MCB 32A
Corrente nominale condizionale di cortocircuito (Inc): 1500 A

Standard IEC62962
 Rated voltage: 230 Vac (50Hz)
 Uimp: 4kV
 Rated current (relay): 16 A
 LSE class B
 Rated load shedding power (PnLs): 10÷8000W
 Load reclosing power (PnLr): 0÷8000W
 Minimum time for load shedding (T_{smin}): 1s
 Minimum disconnection time (T_{dmin}): 10÷240s
 Degree of protection: IP20
 SCPD characteristic: MCB 32A
 Rated conditional short circuit current (Inc): 1500A

Norme IEC62962
 Tension nominale: 230 Vca (50 Hz)
 Uimp: 4kV
 Courant nominal (relais): 16 A
 LSE classe B
 Puissance nominale de délestage de la charge (PnLs): 10 à 8000W
 Puissance de fermeture de la charge (PnLr): 0 à 8000W
 Délai minimum pour le délestage de la charge (T_{smin}): 1s
 Durée minimale du délestage (T_{dmin}): 10 à 240s
 Indice de protection : IP20
 Caractéristiques SCPD: MCB 32A
 Courant nominal conditionnel de court-circuit (Inc): 1500A

Norma IEC62962
Tensión nominal: 230 Vca (50 Hz)
Uimp: 4kV
Intensidad nominal (relé) = 16A
LSE clase B
Potencia nominal de desconexión de la carga (PnLs): 10÷8000W
Potencia de cierre de la carga (PnLr): 0÷8000W
Tiempo mínimo para la desconexión de la carga (T_{smin}): 1s
Tiempo mínimo de desconexión (T_{dmin}): 10÷240s
Grado de protección: IP20
Características SCPD: MCB 32A
Intensidad nominal condicional de cortocircuito (Inc): 1500 A

Norm IEC62962
 Bemessungsspannung: 230 Vac (50 Hz)
 Uimp: 4kV
 Bemessungsstrom (Relais): 16 A
 LSE Klasse B
 Nominale Lasttrennleistung (PnLs): 10÷ 8000W
 Lastwiederanschlussleistung (PnLr): 0÷ 8000W
 Mindestzeit für die Lasttrennung (T_{smin}): 1s
 Mindesttrennzeit (T_{dmin}): 10÷240s
 Schutzart: IP20
 Eigenschaften SCPD: MCB 32A
 Konditionierter Bemessungskurzschlussstrom (Inc): 1500 A

Punto di contatto indicato in adempimento ai fini delle direttive e regolamenti UE applicabili:
 Contact details according to the relevant European Directives and Regulations:
 GEWISS S.p.A. Via D.Bosatelli, 1 IT-24069 Cenate Sotto (BG) Italy tel: +39 035 946 111 E-mail: qualitymarks@gewiss.com

According to applicable UK regulations, the company responsible for placing the goods in UK market is:
GEWISS UK LTD - Unity House, Compass Point Business Park, 9 Stocks Bridge Way, ST IVES
Cambridgeshire, PE27 5JL, United Kingdom tel: +44 1954 712757 E-mail: gewiss-uk@gewiss.com



+39 035 946 111
 8:30 - 12:30 / 14:00 - 18:00
 lunedì - venerdì / monday - friday



www.gewiss.com

