

# USER GUIDE



## Software for quotations

# STRUCTURE

By the GWPRICE software you can make quotations with Article Lists.

**LISTS**  
[Archive Structure]

**TABLES**  
[Articles / Compositions Archive]

To make a quotation you have to insert in the **Quotation table** the Articles from the archives (Lists)

**Quotation Structure**

**Quotation table**

To facilitate the software use, moving the mouse pointer on the command buttons appears a description of the command:

**Price lists**

Search

Description	Tot. discount
EN-CATALOGO EURODOMO	
EN-CATALOGO EURODIN	30.00%
EN-CATALOGO EUROBLOC	
EN-CATALOGO EUROBOX	
EN-CATALOGO EUROLITE	
EN-Z ALTRI/OBSELETTI	
NEWS 2013	

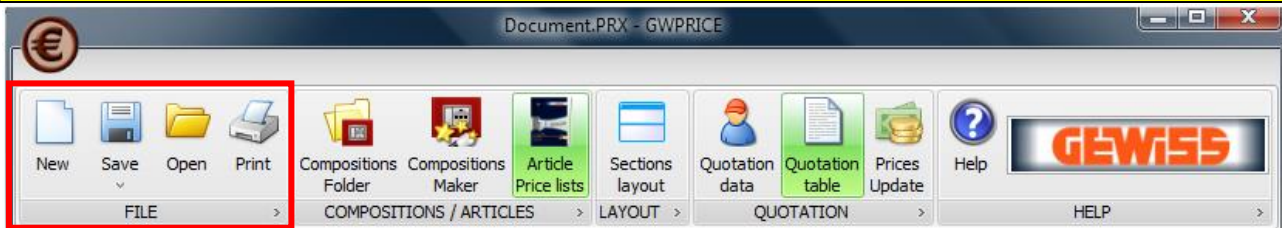
Set the discount or net price to the individual code or all codes in the selected range (node)

QUOTATION TABLE: to insert elements, DOUBLE-CLICK

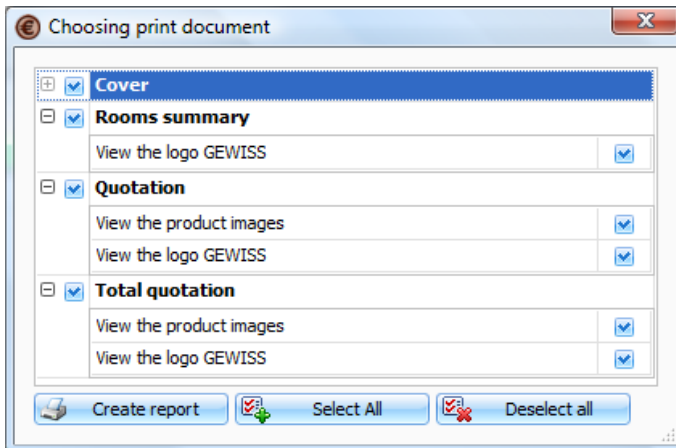
Image	Laying	Code	Description

To export the Quotation Table in "Excel" format

# FILE



Printable documents:



**Cover:**

main data

**Rooms summary:**

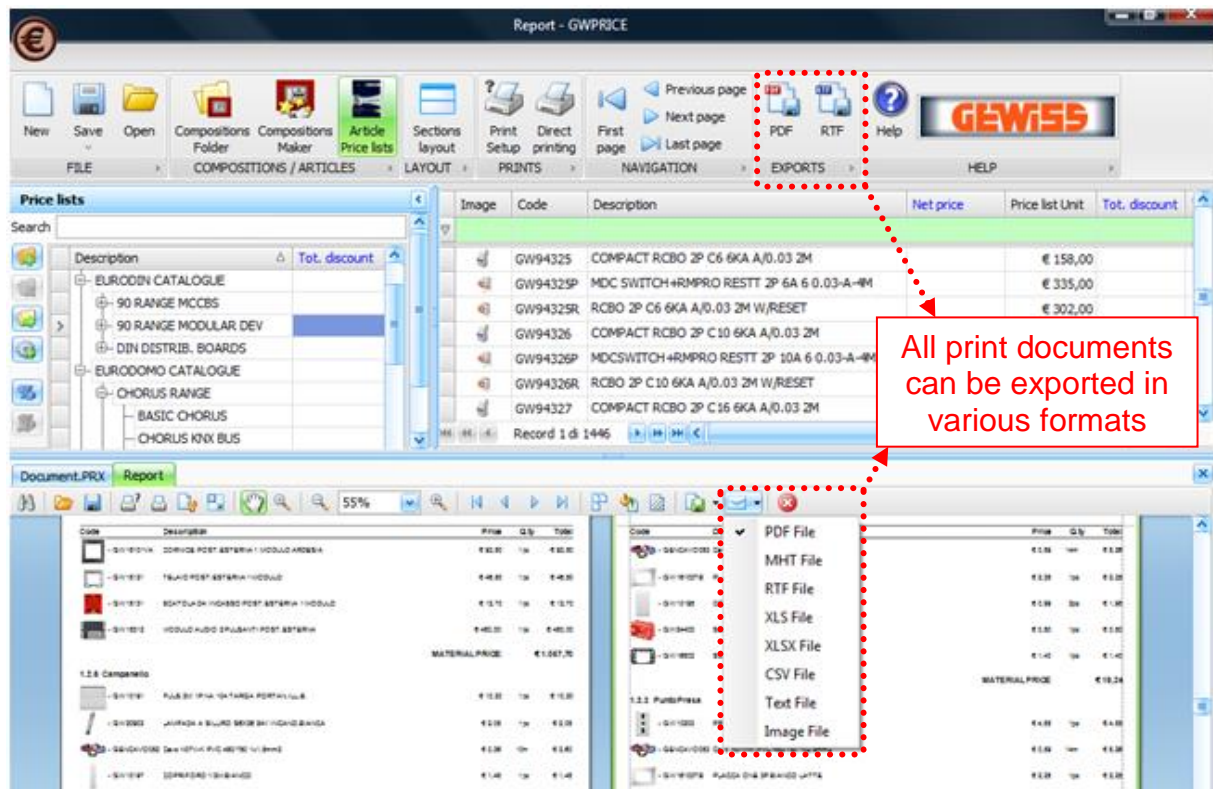
quotation structure (nodes and subnodes)

**Quotation:**

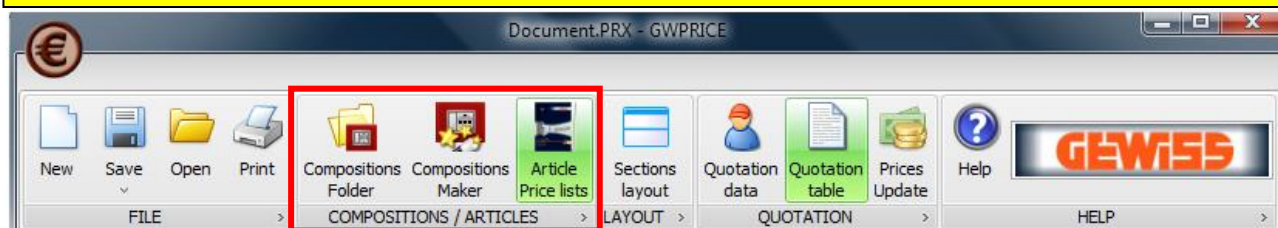
list of codes (not grouped) of the material constituting the quotation

**Total Quotation:**

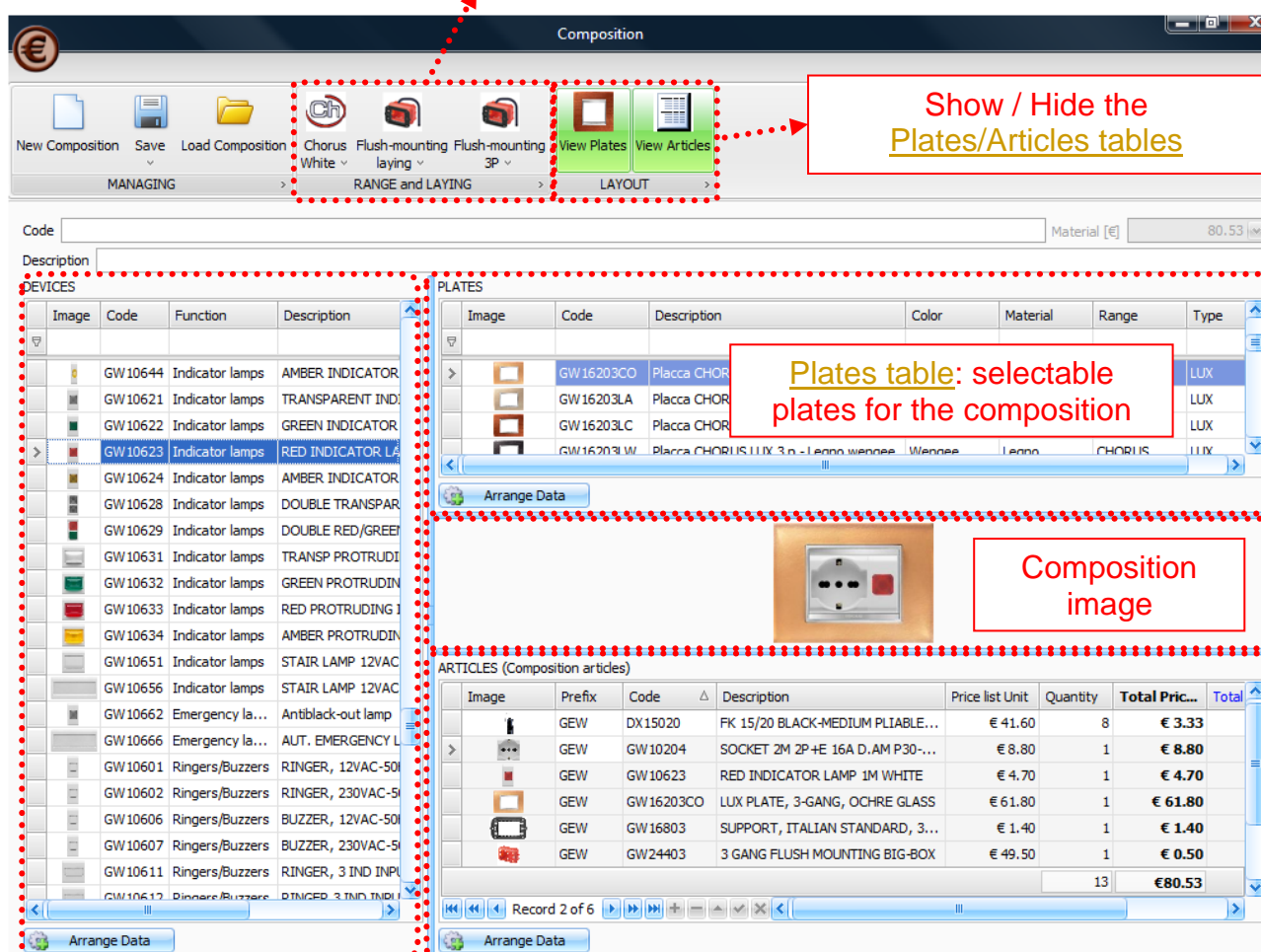
list of codes (grouped) of the material constituting the quotation



## COMPOSITIONS / ARTICLES



Range/Layout  
selection



Modular devices:  
to insert (double click or drag)  
in the plate on the right

Articles table: article list of the  
Composition

In this section you can compose and store compositions.

Commands:

- Range and layout selection
- Realization of the composition by the insertion of modular devices in the same box



Article  
Lists

Articles  
Table

The screenshot shows the Gewiss PRICE software interface. The top menu bar includes 'New', 'Save', 'Open', 'Print', 'Compositions Folder', 'Compositions Maker', 'Article Price lists', 'Sections layout', 'Quotation data', 'Quotation table', 'Prices Update', and 'Help'. The 'Price lists' section on the left shows a tree structure with 'BASIC CHORUS' selected. The 'Articles Table' on the right displays a list of articles with columns: Image, Code, Description, Price list Unit, Tot. discount, and Total Unit. A red box highlights the 'Search filters (green stripes)' in the table header.

Image	Code	Description	Price list Unit	Tot. discount	Total Unit
	GW10721	LATCHING RELAY, 1M 1G 10AX 230V, WHITE	€ 20,30	20,00%	€ 16,24
	GW10723	LATCHING RELAY, 4 SEQUENCES 1M 2P 10AX W	€ 25,30	20,00%	€ 20,24
	GW10724	MOMENTARY RELAY, 1M 1G 10A/4A WHITE	€ 29,80	20,00%	€ 23,84
	GW10725	ELECTRONIC RELAY FOR HEAVY DUTY 2M 1P, W	€ 75,40	20,00%	€ 60,32
	GW10726	CALL RELAY, 1M 1G 12V AC/DC, WHITE			€ 24,56
	GW10741	PULSANTIERA TOUCH EASY 6 CAN.MECCANISMO			135,00
	GW10746	PULSANTIERA TOUCH KNX 6 CAN.MECCANISMO			183,00
	GW10751	BLANKING MODULE INTERFACE 4-INPUT WHITE			€ 2,00
	GW10752	P-BUTTON PANEL, FL-MOUNTING 4-CH EASY W	€ 85,00		€ 85,00
	GW10753	6 CHANNEL P-BUTTON PANEL EASY 3M WHITE	€ 110,00		€ 110,00
	GW10754	6 CHANNEL +1ACT.P-BUTTON PANEL EASY 3M.WH	€ 122,00		€ 122,00
	GW10755	PULSANT.EASY3P 6 CANALI+1ATT.TAP.BIANCO	€ 139,00		€ 139,00
	GW10756	IR+LIGHT-SEN DETECTOR EASY WHITE	€ 119,00		€ 119,00
	GW10761	WALL-MOUNTING TIMED THERMOSTAT, EASY, W	€ 190,00		€ 190,00

Articles Table: to insert Articles in the **Quotation table**, you can:

- make double click on the row;
- drag the row;
- select various rows (by [Ctrl] and/or [Shift] buttons) and [Enter].



To insert in the Quotation table all the Articles of the selected **Article Lists** node



To customize the data columns of the **Article Lists**



To insert/delete:



- **Article Discounts** applicable to **Article Lists** (for family, subfamily, entire list, selected in the left tree)

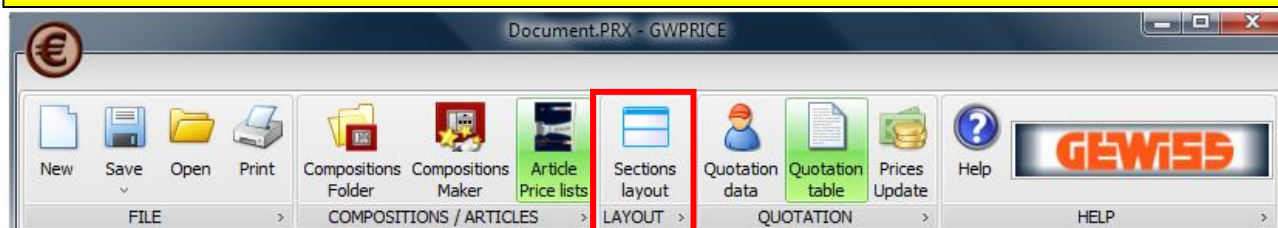
- **Article Discounts** and **Article Net Prices** applicable to single **Article** (selected in the table on the right)



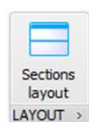
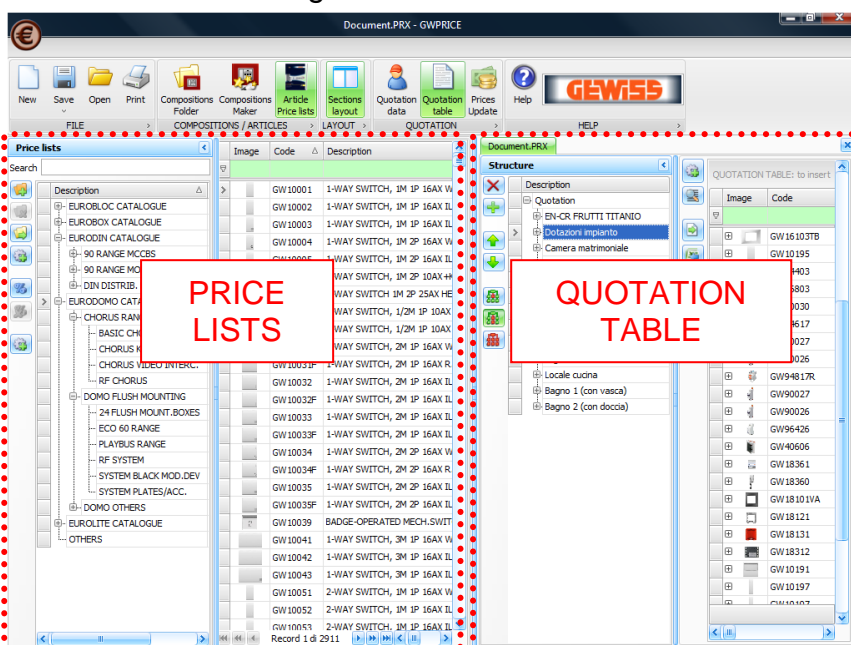
To customize the data columns of the **Articles Table**



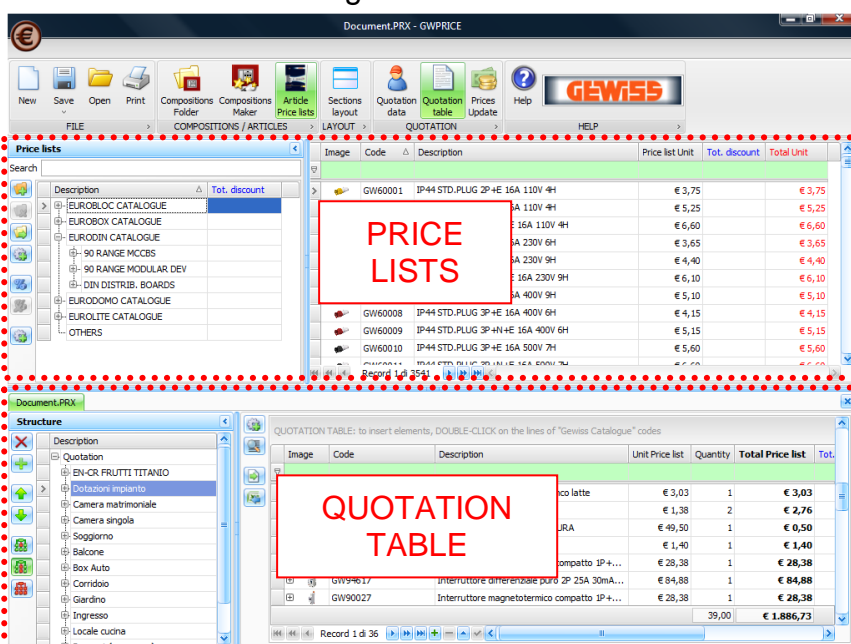
# LAYOUT



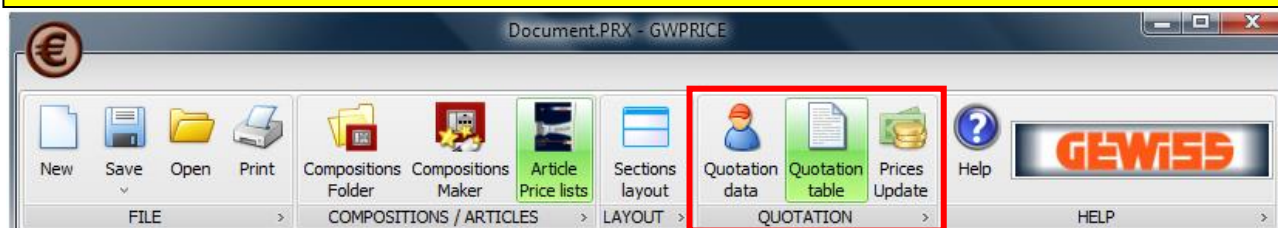
Vertical viewing:



Horizontal viewing:



# **QUOTATION**



Document.PRX

Company Data

Company Logo

Reason for responsibility: Electric Design

Address: Street Place

Locality: Greentower

Telephone: 987654321 Fax: 1357924680

Email: info.www@com.it

Load Logo

Import company data

Save company data

Set as default

Customer Data

Code

Appellation

Name

Address

Town

Province

Cap

Tax Code

VAT code

Notes

Customers data archive

Save data on archive

Data Project

Delivery Date

Test Date

Company Data

Customer Data

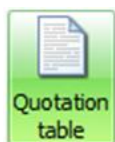
Project Data

## **Company Data:**

the company logo can be inserted as a header of the print documents

## **Customer Data:**

the customer data can be stored in the archive



**Quotation table**

Structure

**Quotation table**

Document.PRX - GWPRICE

FILE: New, Save, Open, Print; COMPOSITIONS / ARTICLES: Compositions Folder, Compositions Maker, Article Price lists; LAYOUT: Sections layout; QUOTATION: Quotation data, Quotation table, Prices Update; HELP: Help

Price lists: Search, Description, Tot. discount

Image	Code	Description	Price list Unit	Tot. discount	Total Unit
	GW14194	BLANKING MODULE 2M CABLE OUTPUT TITANIUM	€ 3,80		€ 3,80

Record 1 di 1723

Structure: Description, Quotation, Room 1, Hall, Kitchen, Bedroom floor 2, Box, Dining room, Garden

QUOTATION TABLE: to insert elements, DOUBLE-CLICK on the lines of "Gewiss Catalogue" codes

Image	Code	Description	Unit Price list	Quantity	Total Price list	Tot. discount	Total
	GW60005	IP44 STD.PLUG 3P+E 16A 230V 9H	€ 4.40	1	€ 4.40		€ 4.40
	GW10004	1-WAY SWITCH, 1M 2P 16AX WHITE	€ 7.10	1	€ 7.10		€ 7.10
	GW10006	1-WAY SWITCH, 1M 2P 10AX+KEY, WHITE	€ 30.90	1	€ 30.90		€ 30.90
	GW10205	SOCKET 2M 2P+EARTH 16A P30 IT/G ST WH...	€ 7.55	1	€ 7.55		€ 7.55
	GW10312	INT SOC, 3M+ MIN.C.BR. 1P+N 16A P30/17 W	€ 68.20	1	€ 68.20		€ 68.20
	GW46233	WATERT.BOARD METAL W.WINDOW 405X5...	€ 184.00	1	€ 184.00		€ 184.00
	GW40005	SURFACE ENCLOSURE 12M.IP55	€ 40.10	1	€ 40.10		€ 40.10
	GW44003	JUNCTION BOX+GLANDS 80X80X40 IP44	€ 1.90	1	€ 1.90		€ 1.90
					12	€492.80	€492.80

Record 2 of 12



To remove / add a node in the Structure



To move the selected node



To visualize the Compositions / Articles just in the selected node



To visualize the Compositions / Articles in the selected node and its subnodes



To visualize the Compositions / Articles in the entire quotation





To customize the data columns of the **Quotation table**



To view the details of each selected Compositions in the **Quotation table**



To import data (Articles) directly in the **Quotation table**



To export the **Quotation table** in Excel format

Export to XLS.XLS [modalità compatibilità] - Microsoft Excel

	A	B	C	D	E	F	G	H
	Image	Code	Description	Unit Price list	Quantity	Total Price list	Tot. discount	Total
1								
2		GW60005	IP44 STD. PLUG 3P +E 16A 230V 9H	€ 4,40	1	€ 4,40	0,00%	€ 4,40
3		GW10004	1-WAY SWITCH, 1M 2P 16AX WHITE	€ 7,10	1	€ 7,10	0,00%	€ 7,10
4		GW10006	1-WAY SWITCH, 1M 2P 10AX+KEY, WHITE	€ 30,90	1	€ 30,90	0,00%	€ 30,90
5		GW10205	SOCKET 2M 2P+EARTH 16A P30 IT/G ST WHITE	€ 7,55	1	€ 7,55	0,00%	€ 7,55
6		GW10312	INT SOC, 3M+ MIN.C.BR. 1P+N 16A P30/17 W	€ 68,20	1	€ 68,20	0,00%	€ 68,20
7		GW46233	WATERT.BOARD METAL W.WINDOW 405X500X200	€ 184,00	1	€ 184,00	0,00%	€ 184,00
8		GW40005	SURFACE ENCLOSURE 12M.IP55	€ 40,10	1	€ 40,10	0,00%	€ 40,10
9		GW44003	JUNCTION BOX+GLANDS 80X80X40 IP44	€ 1,90	1	€ 1,90	0,00%	€ 1,90
10		GW44114	JUNCT.BOX H.CAP.BOT. 100X100X80 GREY COV	€ 5,25	1	€ 5,25	0,00%	€ 5,25
11		GW48003	FLUSH MOUNTING JUNCTION BOX 118X96X70	€ 1,40	1	€ 1,40	0,00%	€ 1,40
12		GW80005	ZNT 2X36W IP65 230V-50HZ	€ 90,60	1	€ 90,60	0,00%	€ 90,60
13		GW80607	GUSCIO 250x175 2X9W G23 IP55 GR.RAL7035	€ 51,40	1	€ 51,40	0,00%	€ 51,40
14					12	€ 492,80		€ 492,80

Data import

Import clipboard (paste)

Import from Gewiss Software

	Article Code	
✓	GW10136	
✓	GW10661	
✓	GW10662	
✓	GW10666	
✓	GW10705	
✓	GW18312	
✓	GW18360	1
✓	GW82715	2
✓	GW20056	78
✓	GW20246	5
✓	GW22103	54
✓	GW24201	54
✓	GW24403	54
✓	GW20203	28
✓	GW20251	4
✓	GW20381	3
✓	GW20571	7
✓	GW20510	6

Data arrangement

Clear data

☐ Import only correct codes  
☒ Import all

Insert quantities grouped

Insert data



The user can choose whether upgrade or not the prices in a document containing dated article prices

## PRICES, DISCOUNT, NET PRICES

### ► Graphics

To facilitate the use of the program the character of Prices, Discounts and the Net Prices have the following format and colors:

PRICES	
Ordinary character	Bold character
<input type="checkbox"/> Unit Price list	<input checked="" type="checkbox"/> <b>Total Price list</b>
<input type="checkbox"/> Final Unit Price (with discount)	<input checked="" type="checkbox"/> <b>Final Total Price (with discount)</b>

DISCOUNT / NET PRICES
<input type="checkbox"/> Discount and Net price Applicable to Articles in the Lists section (5 levels)

### ► Relation between Unit Price and Total Price

[Unit Price] x [Q.ty] = [Unit Total Price]

[Final Unit Price] x [Q.ty] = [Final Total Price]

### ► Relation between Price and Discount/Net price

[Price list] with [Discount/Net Price Articles] > [Final Price]

## UPDATE

The GWPRICE can be directly upgraded from Internet by the GWSINC software:

