



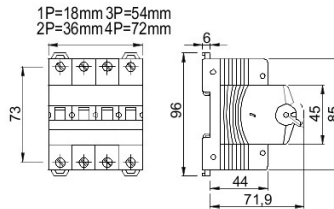
Omschrijving Switch disconnector  
 Code 90 AM-serie  
 Aantal polen 4P  
 Nominale stroom 125 A  
 AC Rated operational voltage (Ue) 415 V

#### ELECTRICAL CHARACTERISTICS

#### MECHANICAL CHARACTERISTICS

|   |                 |                                   |   |
|---|-----------------|-----------------------------------|---|
| Standaard                                       | EN 60947-3      | Mechanical life                   | 20.000 maneuvers  |
| Nominale isolatie-spanning (Ui)                 | 500 V           | Screwdriver suggested             | Philips   |
| Nominale stoot-houdspanning (Uimp)              | 4 kV            | Nominaal aandraaimoment           | 2,5 Nm  |
| Nominale frequentie (Hz)                        | 50/60 Hz        | Max rigid cable section           | ≤ 1x50 mm <sup>2</sup> - ≤ 2x25 mm <sup>2</sup> - ≤ 3x16 mm <sup>2</sup>        |
| Gebruik categorie                               | AC-22A          | Max. section flex. cables         | ≤ 1x70 mm <sup>2</sup> - ≤ 2x35 mm <sup>2</sup> - ≤ 1x16 + 2x25 mm <sup>2</sup> |
| Rated short-time withstand current for 1s (Icw) | 1.500 A         | IP-<br>graad                      | IP20  |
| Power dissipation per pole                      | 6 W             | Bedrijfs-<br>temperatuur          | -5°C + +40°C  |
| Electrical endurance                            | 2.000 maneuvers | Tropicalization                   | 55°C - UR 95%   |
| -   | -               | Upline/downline power supply      | Si  |
| -   | -               | Biconnection (cable + fork combs) | Yes (downstream only)   |
| -   | -               | Vergrendelbaar                    | Nee   |

### DIMENSIONAL



### STANDARDS/APPROVALS



GEWISS S.p.A. Via A. Volta, 1  
 24069 Cenate Sotto - Bergamo - Italy  
 tel. +39 035 94 61 11 fax +39 035 94 69 09

www.gewiss.com  
 sat@gewiss.com  
 Last update 18/07/2024

Data, measures, designs and pictures are shown only as informative purposes, and could be changed without previous notice