



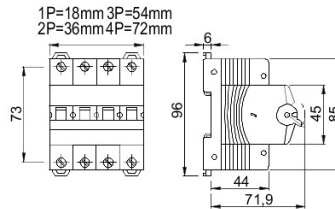
Omschrijving Switch disconnecter
 Code 90 AM-serie
 Aantal polen 3P
 Nominale stroom 63 A
 AC Rated operational voltage (Ue) 415 V

ELECTRICAL CHARACTERISTICS

MECHANICAL CHARACTERISTICS

Standaard	EN 60947-3	Mechanical life	20.000 maneuvers
Nominale isolatie-spanning (Ui)	500 V	Screwdriver suggested	PZ2
Nominale stoot-houdspanning (Uimp)	4 kV	Nominaal aandraaimoment	2 Nm
Nominale frequentie (Hz)	50/60 Hz	Max rigid cable section	≤ 1x35 mm ² - ≤ 2x16 mm ² - ≤ 1x16 + 2x10 mm ²
Gebruik categorie	AC-23B	Max. section flex. cables	≤ 1x35 mm ² - ≤ 2x16 mm ² - ≤ 1x16 + 2x10 mm ²
Rated short-time withstand current for 1s (Icw)	756 A	IP- graad	IP20
Power dissipation per pole	2 W	Bedrijfs- temperatuur	-5°C + +40°C
Electrical endurance	5.000 maneuvers	Tropicalization	55°C - UR 95%
-	-	Upline/downline power supply	Si
-	-	Biconnection (cable + fork combs)	Yes (downstream only)
-	-	Vergrendelbaar	Nee

DIMENSIONAL



STANDARDS/APPROVALS



GEWISS S.p.A. Via A. Volta, 1
 24069 Cenate Sotto - Bergamo - Italy
 tel. +39 035 94 61 11 fax +39 035 94 69 09

www.gewiss.com
 sat@gewiss.com
 Last update 18/07/2024

Data, measures, designs and pictures are shown only as informative purposes, and could be changed without previous notice