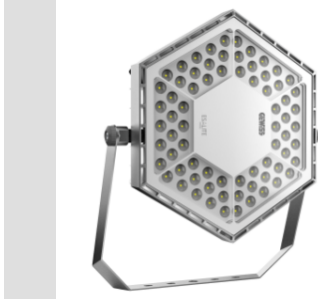


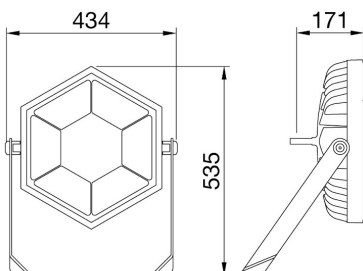
ESALITE FL Schijnwerpers



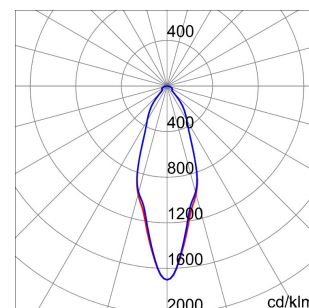
Industrial LED lighting fixture made of die-cast EN AB 46100 aluminium with polyester powder coating. Correct illumination is provided by an optical system composed of different versions of lenses and sealed by an extra-clear tempered glass of 4mm. Silicone gaskets, Goretex breathing and anti-condensation device, waterproof connector for 1.5 mm² cables and stainless steel external screws. Integrated suspension fixing system thanks to a ring made directly in the die-cast aluminium. The die-cast aluminium structure guarantees optimal performance conditions both at Ta25° and Ta50° thanks to specific thermal sizing tests. The correct heat dispersion inside ESALITE is guaranteed by the special passive heat sink with a very low copper content that offers high qualitative and quantitative performances.

| GENERAL INFORMATION | | OPTIC AND ILLUMINATING FEATURES | |
|--|---|-------------------------------------|---|
| Context | Industry, Logistic, Façade, Sport | Optiek | Narrow 30° |
| Luminaire | LED luminaire with mid and high lumen power | Unified Glare Rating | UGR ≤ 25 |
| Toepassing | Binnenshuis / buitenshuis | Lumen-vermogen (lm) | 13300 |
| Unique digital code (Datamatrix) | Datamatrix | Efficacy (lm/W) | 106 |
| Kleur | Grey RAL 9006 | Kleur temperatuur | 5700 K |
| Type lichtbron | LED | Colour Rendering Index | CRI>80 |
| System vermogen | 125 W | Standard Deviation Colour Matching | SDCM = 3 |
| LED Lifetime | L90B10 (Tq 25°) 100000 h; L90B10 (Tq 50°) 55000 h | Photobiological Risk Class | - |
| Gewicht (kg) | 9.5 | Standaard | EN60598-1; EN60598-2-5; IEC 62778; IEC62471 |
| Garantie | 5 jaar | ELETRICAL AND LIGHTING FEATURES | |
| Opslagtemperatuur | -25°C + +70°C / HR 10% + 85% | Voedings-spanning | 220-240 V |
| Operating temperature | -25°C + +50°C | Nominale frequentie (Hz) | 50/60 Hz |
| MATERIALS | | Driver | Included |
| Body | Gietaluminium | Driver failure rate | F10 = 100.000h Tq25°C/50.000h Tq50°C |
| Type plaat | Flat tempered glass 4mm | Overvoltage protection | DM 6KV / CM 8KV |
| Optic | PMMA lens | Control System | DALI |
| Gasket | CNC deposited sealant | INSTALLATION AND MAINTENANCE | |
| Locking Hook | - | Mounting and installation | Beugel |
| External screw | Stainless steel | Tilt | With graduated fixing bracket |
| Colour | Polyester powder coated | Wiring | With watertight connector |
| STANDARDS AND APPROVALS | | Bevestiging | - |
| Classificering | - | Light source replaceability | Non-replaceable |
| Toestel met verlaagde oppervlaktetemperatuur | - | Controlgear replaceability | By professional |
| DIN 18032-3-certificering | Not available | Driver Box | Ingebouwd |
| IPEA | - | Maximum surface exposed to the wind | 0,13 m ² |
| Isolatie-klasse | I | | - |
| IP-graad | IP66 | | - |
| Stootbestendigheid | IK08 | | - |
| Glow Wire Test | - | | - |

DIMENSIONAL



PHOTOMETRIC DISTRIBUTION



ESALITE FL
Schijnwerpers

TECHNICAL SYMBOLOGY



0,13 m²



IP
IP66

IK
IK08

GWT
-

STANDARDS/APPROVALS

