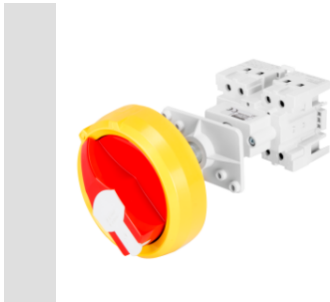


Draaischeidingschakelaars



70 RT HP is a complete offer of rotary isolator switches from 16 A to 160 A, available in boxes both in insulating material and metal, in control or emergency versions, compatible with the main applications for residential, tertiary and industrial contexts. DC versions for photovoltaic applications are also available from 16 A to 40 A in insulating box. The series is completed with versions for board from 16 A to 800 A and for DIN rail fixing from 16 A to 63 A, which can be equipped with auxiliary contacts. The devices have been designed to reduce wiring time, facilitate installation and guarantee the maximum safety and robustness even in the most demanding conditions.

Stroomonderbreker	Rotary isolator	Uitvoering	Van bord
Nominale stroom (A)	80	Aantal polen	3P
Regelveld	114 - 177 mm	Aantal modules EN 50022	5
Current in AC21A (415V)	80	Kleur knop	Rood
Current in AC22A (415V)	80	Vergrendelbaar	YES (max. 3 locks in OFF)
Current in AC23A (415V)	80	Kabeldoorsnede	2,5-25 mm ²
Power dissipation per pole	3,71 W/pole		

DIMENSIONAL

STANDARDS/APPROVALS



GEWISS S.p.A. Via A. Volta, 1
24069 Cenate Sotto - Bergamo - Italy
tel. +39 035 94 61 11 fax +39 035 94 69 09

www.gewiss.com
sat@gewiss.com
Last update 17/07/2024

Data, measures, designs and pictures are shown only as informative purposes, and could be changed without previous notice